



**Balance of Payments
of the
Kyrgyz Republic**

First half of 2004

October 2004

Bishkek

EDITORIAL
BOARD:

Chairman: M. Myrzabaeva.
Board Members: E. Abdumanapov,
L. Tsyplakova,
Yu. Bushman
Executive Secretary: A. Masydykov.

Major shapers of the present publication are the following experts:
A. Masydykov, M. Koichueva, A. Berdigulova, M. Satkeyeva, S. Muralieva.

Founder – National Bank of the Kyrgyz Republic
The periodical is registered with the Ministry of Justice of the Kyrgyz Republic
Registration number 605
Printed by the printing center of the Banking Herald magazine office
265 Chuy av., Bishkek, 720071
Tel: (312) 657693, 243335
(312) 243801
Fax: (312) 657693

© No part of this publication may be reprinted or quoted in any form or by any means without the permission of National Bank of the Kyrgyz Republic and without the indication of sources of information, correspondingly
Text design, makeup, prints - “Banking Herald of the Kyrgyz Republic”

Balance of Payments of the Kyrgyz Republic

Balance of Payments of the Kyrgyz Republic prepared by the National Bank of the Kyrgyz Republic. This issue reflects recent external sector trends and contains tables with data on the balance of payments, analytic and standard presentation formats, a pattern of foreign trade, international reserves, external debt, the balance of payments compilation methodology and data base, as well as on the Kyrgyz Republic's international investment position. The edition is published 4 times a year – in January, May, July, and October. It is published in three languages: Kyrgyz, Russian, and English.

The final update date for the present edition is October 20, 2004

Notation:

- ... data are not available;
- indicators are equal to 0 (zero) or negligible;
- period between years or months (for example, 1994 – 1996 or January - June).

Due to rounding of numbers there could be discrepancies in the numbers following a dot.

Due to the possible changes in accounting techniques of historical data, used in this publication, there would be adjustments made to the earlier published data and, accordingly, the period of 5 years is considered as “open”.

Address editorial correspondence to:

tel.: (312) 66-90-57, 66-90-56,

fax.: (312) 66-90-55, 61-07-30

Address: 101 Umetaliev Str., Bishkek, 720040

National Bank of the Kyrgyz Republic,

Economic Department,

Balance of Payments Division.

E-mail: mkoichueva@nbkr.kg

Other publications of the National Bank of the Kyrgyz Republic

Annual Report of the National Bank of the Kyrgyz Republic

The annual report is the NBKR's full account of the work during the reporting year. It contains a short description of real sector developments in the economy of the republic and decisions and actions of the National Bank in the monetary sphere. It comprises information on economic development and a monetary policy, financial reporting, general data on the National Bank, and statistical annexes. It is published in three languages: Kyrgyz, Russian, and English.

Bulletin of the National Bank of the Kyrgyz Republic

The Bulletin of the NBKR contains macroeconomic indicators of the Kyrgyz Republic on the real, financial, and external sectors of the economy, information on prices, and social indicators. Data from departments of the National Bank, as well as from commercial banks, the Ministry of Finance of the Kyrgyz Republic, the National Statistics Committee of the Kyrgyz Republic, and the National Commission for the Securities Market of the Kyrgyz Republic are used for its compilation. It is published on a monthly basis in Kyrgyz, Russian, and English.

Review of inflation on the Kyrgyz Republic

Review of inflation in the Kyrgyz Republic contains a description of inflation developments by components in the regional context, and, in general, the analysis of inflation factors and the inflation forecast for the forthcoming quarter. It is published on the quarterly basis in Kyrgyz, Russian and English.

Banking System Development Trends

The purpose of the “Banking System Development Trends” is to study and assess development of the banking system in Kyrgyzstan, as an official intermediary, to identify obstacles to achievement and maintenance of stability, as well as to estimate elements of stability in the banking system of Kyrgyzstan. It is published as of January 1 and July 1 in Kyrgyz and Russian.

Statutory Acts of the National Bank of the Kyrgyz Republic

The goal of the publication "Statutory Acts of the National Bank of the Kyrgyz Republic" is to officially publish the statutory acts of the National Bank to furnish the commercial banks and the public with the normative documents of the National Bank and official information about performance of the National Bank, as well as to promulgate the banking legislation of the Kyrgyz Republic. Assumptive periodicity of the journal is to publish once a month in Kyrgyz, Russian and English.

Press Release of the National Bank of the Kyrgyz Republic

Press Release of the NBKR contains a chronicle of events in the National Bank and the financial market basic data. It is published on a weekly basis in Kyrgyz and Russian.

All of the publications are distributed in compliance with the lists approved through the Orders of Chairman of the National Bank of the Kyrgyz Republic and are placed on the web-site of the NBKR: <http://www.nbkr.kg>

List of Abbreviations

ADB	Asian Development Bank
BOP	Balance of Payments
CB	Commercial Banks
CIF	The price on the frontier of the importing country (cost, insurance, freight), including: a) the f.o.b value of commodities, that is, their value to the frontier of the exporting country, b) transportation costs as well as costs of insurance services from
CIS	Commonwealth of Independent States
CPI	Consumer Price Index
EBRD	European Bank for Reconstruction and Development
EEC	European Economic Community
FOB	The price on the frontier of the exporting country (free on board), including the value of the commodity delivered to the frontier of the exporting country, that is, the producers' price, trade markups, transportation costs to the frontier of the exporting
GDP	Gross Domestic Products
HS	Harmonized system
IMF	International Monetary Fund
ITRS	International Transactions Reporting System
KR	Kyrgyz Republic
MA	Monetary Authorities
MFA	Ministry of Foreign Affairs of the Kyrgyz Republic
MFKR	Ministry of Finance of the Kyrgyz Republic
MTC	Ministry of Transport and Communications of the Kyrgyz Republic
NBKR	National Bank of the Kyrgyz Republic
NEER	Nominal Effective Exchange Rate
Non-CIS	Non-CIS countries
NSC	National Statistics Committee
PED	Public External Debt. PED is a sum of disbursed and outstanding external public loans or other debt instruments of the Kyrgyz Republic to non-resident creditors of the Kyrgyz Republic with definite maturity
PIP	Public Investment Program
REER	Real Effective Exchange Rate
SCI	State Customs Inspectorate under the Ministry of Finance of the Kyrgyz Republic
SDR	Special Drawing Rights
SITC	Standard International Trade Classification
STB	State Treasury Bills
TA	Technical Assistance
TED	Total External Debt is a sum of disbursed and outstanding government and non-government loans of the Kyrgyz Republic borrowed under credit agreement or other debt instruments with definite maturity
WB	World Bank

Contents

1. Recent developments	6
Annex I. Tables and charts	13
Table I.1: Balance of payments of the Kyrgyz Republic (standard presentation)	14
Table I.2: Structure of Export by the HS sections	22
Table I.3: Structure of Export by the SITC sections	22
Table I.4: Structure of Import by the HS sections	23
Table I.5: Structure of Import by the SITC sections	23
Table I.6: Functional structure of Export	24
Table I.7: Geographic structure of Export	24
Table I.8: Export of goods by individuals	24
Table I.9: Functional structure of Import	25
Table I.10: Geographic structure of Import	25
Table I.11: Import of goods by individuals	25
Table I.12: Export of major types of products	26
Table I.13: Import of major types of products	28
Table I.14: Impact of price and quantity on the volume of export	30
Table I.15: Impact of price and quantity on the volume of import	31
Export of basic goods by countries	32
Table I.16: Export of goods to Russia	32
Table I.17: Export of goods to Kazakhstan	33
Table I.18: Export of goods to Uzbekistan	34
Table I.19: Export of goods to Belarus	35
Table I.20: Export of goods to Switzerland	36
Table I.21: Export of goods to China	37
Table I.22: Export of goods to USA	38
Table I.23: Export of goods to Turkey	39
Table I.24: Export of goods to Germany	40
Table I.25: Export of goods to United Kingdom	41
Table I.26: Export of goods to UAE	42
Import of basic goods by countries	43
Table I.27: Import of goods from Russia	43
Table I.28: Import of goods from Kazakhstan	44
Table I.29: Import of goods from Uzbekistan	45
Table I.30: Import of goods from Belarus	46
Table I.31: Import of goods from China	47
Table I.32: Import of goods from the USA	48
Table I.33: Import of goods from Germany	49
Table I.34: Import of goods from Turkey	50
Chart I.1 Exchange rate and the real effective exchange rate index	51
Table I.35: Real and Nominal Effective Exchange Rate Indices	52
Table I.36: Geographic structure of foreign direct investments in Kyrgyz Republic	54
Table I.37: International reserves (end of period)	54
Table I.38: External Debt of the Kyrgyz Republic	55
Table I.39: Structure of the external Debt of the Kyrgyz Republic by creditors	56
Table I.40: Internal Investment Position of the Kyrgyz Republic.....	57
Table I.41: Developments in Foreign Assets and Liabilities of the Kyrgyz Republic.....	58
Annex II.	
Table II.1: Sources of Information used by the National Bank for Compilation of the Balance of Payments of the Kyrgyz Republic	59

Balance of Payments:

1. Recent Developments

A foreign trade turnover of the Kyrgyz Republic for January to June 2004 increased considerably in comparison with the first half of 2003: by 55.1 percent - with CIS countries, by 56.4 percent - with the EurAsEC member countries, and by 35 percent - with the non-CIS countries.

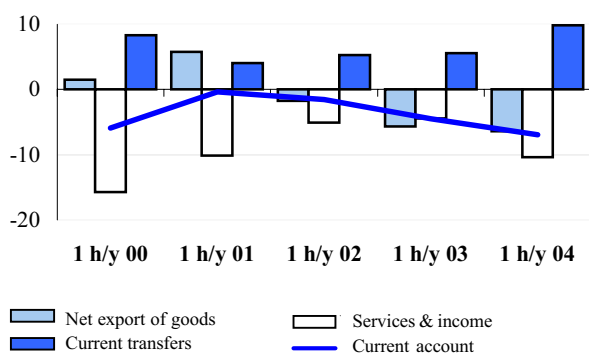
By and large, the balance of payments of the republic developed as negative of US\$ 15.3 million for the period under review. However, it should be noted that the negative balance of payments decreased by US\$ 10 million in comparison with the first half of 2003.

The current account of the balance of payments made 6.9 percent of GDP for the specified period and had a gap equal to US\$ 55.3 million. The current account deficit increased 1.8 times with respect to the comparable period of the last year. It was mainly connected to substantial growth of the negative balance of income (by US\$ 27.2 million) and growth of the trade deficit (by 36.5 percent).

A foreign trade turnover of the Kyrgyz Republic for the first half of 2004 totaled US\$ 737.4 million as against US\$ 511.5 million in 2003.

Chart 1: Current account

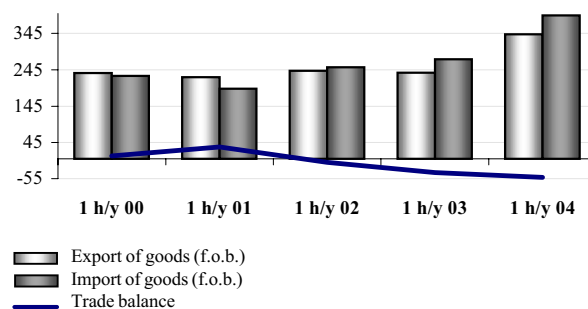
in percent of GDP



The trade deficit of US\$51.2 million was by 34.4 percent larger than the foreign trade deficit in the corresponding period of 2003. At the same time, import was covered by export by 87 percent (in the first half of 2003 it was covered by 86.1 percent).

Chart 2: KR Trade Balance

millions of US dollars



Export of goods in FOB prices developed at a level of US\$ 343.1 million, being by 45 percent larger than export in the comparable period of 2003.

Table 1: Export of Goods

(in millions of US dollars)

	1 h/y 00	1 h/y 01	1 h/y 02	1 h/y 03	1 h/y 04
Export (f.o.b.)	235,7	224,7	241,9	236,7	343,1
Rate of growth (in percent)	3,5	-4,7	7,6	-2,2	45,0

Growth of gold prices in world markets was the primary factor of growth of export of goods. The volume of exported gold increased by 50.2 percent and totaled US\$ 150 million. Export of goods excluding gold increased by 42.9 percent and it was connected to the increased volume of jet fuel, cotton fiber, sugar, glass, metal ore, scrap, lime, cement, slate, inorganic chemicals, electricity and vegetables.

In January to June 2004, from the point of view of its functional structure export of consumer goods was observed to increase by 64 percent in comparison with the similar period of the previous year, with their share in the volume of export being 20 percent. Growth of the volume of export of primary and non-capital items was registered at 45.7 and 46.4 percent, correspondingly. Export of energy resources increased by 23.1 percent and totaled US\$ 29.8 million.

The geographic distribution of export in the first half of 2004 developed in favor of non-CIS countries, whose share was 65.6 percent of the total volume of export. The United Arab Emirates (27.9 percent of export to the non-CIS countries), Switzerland (16.8 percent), Canada (7 percent), China (5.8 percent) and Turkey (1.8 percent) continue to remain as basic consumers of Kyrgyz export among the non-CIS countries. These countries imported precious metals, cotton fiber, jet fuel, vegetables, hides, metal ores, scrap, and nonferrous metals.

The largest trading partners among the CIS countries in the period under review were Russia and Kazakhstan, whose share was 80.6 percent of total

exports of CIS countries. Growth of export to Russia was due to growth of export deliveries of vegetables, sugar, kerosene, clothes, and jewelry. Slate and cement to Kazakhstan were the basic items of export.

Import of goods¹ at FOB prices totaled US\$ 394.3 million according to the outcome of the accounting period. The increase concerning the base period was US\$119.5 million.

Table 2: Import of Goods
(in millions of US dollars)

	1 h/y 00	1 h/y 01	1 h/y 02	1 h/y 03	1 h/y 04
Import (<i>f.o.b.</i>)	228,2	192,8	251,9	274,8	394,3
Change, in %	-7,8	-15,5	30,7	9,1	43,5

The volume of import increased in all functional groups of goods in the first half of 2004. The largest items of import were those of consumer goods and energy resources, their shares made 33.9 percent and 27 percent, correspondingly. Growth of volumes of consumer goods was caused by an increased inflow of such goods, as pharmaceutical production, fabrics, beer and vehicles. In addition, growth of import of spare parts of machines and equipment, other plastic, rolled ferrous metals and asbestos in the accounting period caused an increase in import of noncapital items from US\$ 47.6 million to US\$ 69.2 million.

The share of the CIS countries, 60.9 percent, prevailed in the geographic structure of Kyrgyz imports. Russia became the largest partner in imports from the CIS countries - its share was 47.2 percent or US\$ 121.2 million. Import receipts from Kazakhstan and Uzbekistan made US\$ 97.1 million and US\$ 25.5 million, correspondingly. The largest shares in total imports from the CIS countries were those of mineral products basically imported from Kazakhstan, Russia and Uzbekistan. Import receipts of inorganic chemicals, sugar, beer, medicines, soaps, detergents, and polishes also increased.

The non-CIS countries are represented in the structure of import by mainly such countries as: China (US\$ 37.2 million), the USA (US\$ 27.3 million), Germany (US\$ 22.2 million) and Turkey (US\$11.8 million). Machines, equipment and mechanisms, food products and means of surface transport were basically imported from the European countries. The Asian countries imported tea, plastic, foot-wear, clothes, artificial textiles, metal products, equipment and telecommunication equipment. The American countries imported meat and meat products, parts of

machines, clothes, telecommunication equipment, pharmaceutical products, medicines, and vegetable oils.

The balance of international services deteriorated in the first half of 2004. The balance of services developed negative and totaled US\$ 33.5 million for the first six months of the current year.

Table 3: Balance of International Services
(in millions of US dollars)

	1 h/y 00	1 h/y 01	1 h/y 02	1 h/y 03	1 h/y 04
Balance of services	-46,9	-27,4	-3,9	-7,5	-33,5
Export of services	28,8	32,2	57,5	61,6	80,7
Change in %	-4,9	11,9	78,6	7,0	31,1
Import of services	75,7	59,6	61,4	69,1	114,3
Change in %	2	-21	3	12	65
Turnover of services	104,5	91,9	119,0	130,7	195,0
Change in %	0,2	-12,1	29,5	9,8	49,2

Based on the results of the first half of 2004, export of services is estimated at US\$ 80.7 million being larger by US\$ 19.1 million than this parameter in the first half of 2003. The largest shares were those of transportation, tourism and business services that totally made 84.4 percent in the total of services rendered to non-residents. Significant growth was registered in the tourism services that doubled in comparison with the base period, being connected to development of this sphere. Transport services decreased, on the contrary, by 3.2 percent speaking for a reduction of the share of services of railway transportation by 2.2 percent, pipeline - by 1.3 percent, and air transport - by 0.2 percent. The motor transport services increased by 0.5 percent. Export of communication services decreased almost one and a half times and export of construction services was three times less. The abrupt reduction, 6 times, was observed in the sphere of governmental services. Insignificant growth was registered in the field of other services - by 1.1 percent.

The services from the non-residents totaled US\$114.3 million. Growth was strongly pronounced in the items "Travel" and "Insurance Services" - more than 3.5 times. Import of transport services, the basic position in import of services, changed by 6.9 percent: import of transport services from the CIS countries increased by 3.6 percent, and from the non-CIS countries - by 3.3 percent. A sharp drop is noted in the item of business services - 3.7 times. Except for the transport services, whose share is 44.7 percent of the total volume of services rendered by the non-residents, the significant share was that of insurance services (35.2 percent), trips (25.8 percent) and business services (4.9 percent).

¹ Import at CIF prices in the first half of 2004 totaled US\$ 421.7 million, with the trade deficit being US\$ 83.5 million.

In the first half of 2003 the deficit of the balance of income increased to US\$ 49.4 million as against US\$ 22.2 million in the similar period of the last year. Such a substantial increase in the deficit was registered owing to growth of payments of income from direct investments. The negative balance of direct investment grew from US\$ 6 million to US\$ 31.1 million. Such a substantial increase was registered only with respect to the item "Reinvested Income", whose growth caused the increase in the general gap in the balance of income. At the same time, the negative balance of reinvested income just in the 1st half of the current year developed in the amount of US\$ 30.3 million, having exceeded the annual parameter of the last year by 40 percent. The distributed profit in the considered period remained unchanged with respect to the similar period of the last year. Accrued interest on credits as direct investments attracted by enterprises decreased, on the contrary, by 73 percent and totaled US\$ 0.8 million as against US\$ 2.9 million in the 1st half of 2003. The positive balance of income from portfolio investments including basically operations of commercial banks with foreign securities was halved from US\$ 0.2 million to US\$ 0.1 million.

The deficit of income from other investment increased by 76 percent and made US\$ 18 million. Such a substantial growth was due to the 50 percent growth of income in the item "Interest on Credits", of which the share of the public sector was 70 percent and that of the private sector - 20 percent. A net outflow of financial assets as an offset of interest on credits of the public sector of the economy totaled US\$ 13.8 million as against US\$ 11.4 million in the first half of the last year and, accordingly, on the credits of the private sector - US\$ 5.1 million as against US\$ 0.9 million. Accrued interest on the IMF credits was reduced by 3 percent. Other income from other investment in the economy of the Kyrgyz Republic decreased by 42 percent and made US\$ 1.5 million in the 1st half of the current year.

Compensation of labor to the non-residents temporarily employed in the economy of Kyrgyzstan made US\$ 0.1 million and it is essentially less in comparison with the similar period of the last year, when this parameter was equal to US\$ 5.9 million.

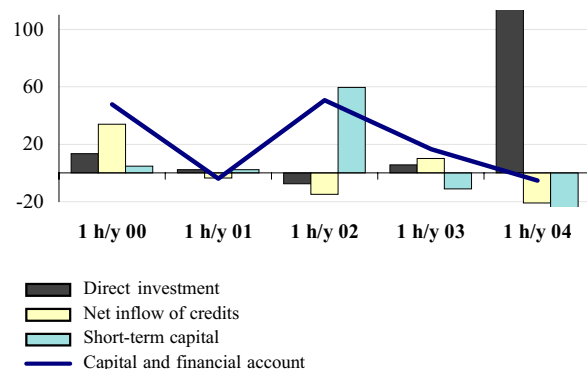
Current transfers developed at the level of US\$ 78.5 million as against US\$ 37.2 million in the base period. At the same time, growth was registered practically in all of the items of the balance of current transfers. For instance, the volume of official transfers in the republic increased by US\$ 8.3 million and made US\$

14.1 million, with commodity grants making US\$ 10.1 million, the cash grants - US\$ 4.8 million (in the first half of 2003 these parameters were equal to US\$ 4.6 and 1.5 million, correspondingly). The net inflow of transfers from citizens working abroad increased by 99.7 percent.

The negative balance of the capital and financial account (in the analytic format of the balance of payments) in the 1st half of 2004 totaled US\$ 5.2 million, whereas in the comparable period of 2003 this account had the positive balance of US\$16.6 million.

Chart 3: Capital and Financial Account

in millions of US dollars



According to the results of the first half of the current year the balance of the capital account developed as negative of US\$ 3.5 million and was less by US\$ 15.4 million than the same parameter in the similar period of 2003. The reduction in the net inflow of capital speaks for the reduction of the volume of investment goods received in the republic as humanitarian aid. In the comparable period of the last year it made US\$ 2.8 million, while in the current year it was almost halved. The net outflow of migrants' assets increased by US\$ 15.4 million as compared to the similar parameter of the last year.

The financial account had the negative balance of US\$ 1.7 million in the first half of 2004, whereas one year earlier it had the positive balance of US\$ 4.6 million. Basically, the negative balance of this account was due to transactions with other investments and financial derivatives. Totally, the outflow of capital under these items compensated the inflow of financial assets on direct investment.

The net inflow on direct investment for the first half of 2004 made US\$ 118.4 million and in comparison with the similar period of the last year it increased by US\$ 112.7 million. Such an abrupt increase speaks

for the inflow of proceeds from a sale of the Kyrgyz share in the foreign company.

The decline in the transactions of commercial banks with foreign securities caused the reduction of operations with the portfolio investments

In the accounting half of the year they made US\$ 8.1 million as against US\$12.4 million in the base period.

Gold price fluctuations in the world market became the reason for the reduction in the yield of operations on hedging the price of sold gold and led to the further outflow of capital in the item "Financial Derivatives". For instance, if in the first half of 2003 the outflow made US\$ 8.3 million, in the period under review the given parameter made US\$ 20.5 million.

Other investment increased 20.7 times in the accounting period and made US\$ 107.7 million caused by the inflow of capital in the item "Accounts of Enterprises Abroad" owing to the sale of the share of the Kyrgyz enterprise in the foreign company.

The first half of 2004 was characterized by the reduction of also the rates of growth of "Cash and Deposits" that was equivalent to US\$ 7,0 million, with US\$ 28.5 million - in the base period. Alongside with this, the increase was noted in debtor indebtedness - almost 6 times and was equivalent to US\$ 16.8 million in the period under consideration.

The net outflow of total liabilities on other investment made US\$ 48.7 million, having increased vis-a-vis the half-year period by US\$ 77.7 million. The reduction in the given parameter was registered owing to the reduction of cash receipts in the item "Cash and Deposits" - by US\$ 32.9 million, "credits" - by US\$ 31.1 million, "Creditor Indebtedness" - by US\$ 23.1 million. The rates of growth of long-term liabilities of the republic continued to decrease in the accounting period. For instance, if in the first half of 2003 their size was equivalent to US\$ 30.1 million, already in the period under review the receipt of credits were reduced 1.5 times in aggregate terms and made US\$ 19.1 million.

Based on the results of six months of the current year, the item "Net Errors and Omissions" that reflects under-accounted external operations made US\$ 45.2 million in positive terms. While in the base period the given parameter was negative of US\$12,1 million. The positive balance of the item "Net Errors and Omissions" testifies to a greater extent about the underaccounting of operations connected to incomplete coverage by statistics of export of goods and services, inflow of transfers and capital in the republic.

Thus, based on the results of the first half of 2004 the balance of payments of the Kyrgyz Republic developed as negative of US\$15.3 million. At the same time, the volume of international reserves at the end of the accounting period made US\$ 388.0 million and covers in its turn 5.4 months of import of goods and services.

Table 1.1. The Balance of Payments of the Kyrgyz Republic
(analytic presentation)
(in millions of US dollars)

	2000	2001	2002	2003	2003	2004
					h/y	h/y
Current Account	-77,6	-16,9	-24,2	-24,6	-29,7	-55,3
Goods and services	-82,9	-4,5	-59,4	-77,2	-45,1	-84,7
Trade balance	4,0	39,9	-54,0	-82,7	-37,5	-51,2
Exports (f. o. b)	510,9	480,3	498,1	590,3	236,7	343,1
CIS	213,7	172,2	170,3	202,4	78,5	116,9
Non-CIS countries	297,2	308,0	327,7	387,9	158,1	226,2
Imports (f. o. b)	506,9	440,4	552,1	673,0	274,2	394,3
CIS	279,7	250,0	311,7	394,5	156,1	244,8
Non-CIS countries	227,2	190,3	240,3	278,6	118,1	149,5
Balance of services	-86,9	-44,4	-5,4	5,5	-7,5	-33,5
Rendered services	61,8	80,3	142,0	154,9	61,6	80,7
Received services	-148,8	-124,7	-147,4	-149,5	-69,1	-114,3
Income	-82,1	-63,6	-53,2	-59,1	-21,9	-49,1
Direct investment income	-37,2	-25,5	-15,6	-25,2	-6,0	-31,1
Portfolio investment income	0,0	-0,1	0,3	0,3	0,2	0,1
Other investment income	-34,5	-27,7	-26,4	-22,3	-10,2	-18,0
Interest in loans (schedule)	-51,3	-39,3	-32,0	-26,8	-12,8	-19,5
Other investment income	16,8	11,6	5,5	4,5	2,6	1,5
Compensation of employees	-10,3	-10,3	-11,4	-11,9	-5,9	-0,1
Current transfers	87,4	51,1	88,4	111,7	37,2	78,5
Capital and financial account	59,4	29,2	107,2	-4,7	16,6	-5,2
Capital account	-11,4	-6,9	22,2	20,5	11,9	-3,5
Capital transfers	-11,4	-6,9	22,2	20,5	11,9	-3,5
Financial account	70,8	36,1	85,0	-25,2	4,6	-1,7
Direct investment in the KR	-6,9	-1,1	4,7	45,5	5,7	118,4
Portfolio investment	-1,3	1,2	-12,0	6,0	12,4	8,1
Financial derivatives	25,8	17,6	-5,1	-20,0	-8,3	-20,5
Other investment	53,2	18,4	97,4	-56,8	-5,2	-107,7
Assets (- accretion)	-27,3	-4,0	21,5	-78,7	-34,2	-59,0
Banks	-1,6	-16,5	-42,3	-50,2	-29,9	-6,8
Other assets	-25,8	12,5	63,8	-28,5	-4,3	-52,2
Liabilities (+ accretion)	80,5	22,4	76,0	21,9	29,0	-48,7
Banks	-0,3	3,9	32,7	36,6	22,2	-6,0
Loans	41,0	17,7	32,7	-22,6	10,1	-21,0
General government	92,9	67,2	50,8	29,5	10,2	-6,2
Disbursement	127,4	110,2	88,1	71,1	30,0	16,1
Amortization (schedule)	-34,5	-43,1	-37,3	-41,6	-19,8	-22,4
Private sector	-52,0	-49,5	-18,2	-52,1	0,0	-14,7
Disbursement	3,9	4,3	1,9	8,4	0,2	3,0
Amortization (schedule)	-55,8	-53,8	-20,1	-60,5	-0,2	-17,7
Other liabilities	39,9	0,8	10,6	7,9	-3,3	-21,7
Net errors and omissions	2,5	-9,4	-54,1	38,6	-12,1	45,2
Overall balance	-15,7	2,8	28,9	9,3	-25,3	-15,3
Financing	15,7	-2,8	-28,9	-9,3	25,3	15,3
NBKR reserves	-21,2	-16,3	-43,8	-50,8	6,5	-8,2
IMF loans	7,3	-2,1	-6,0	-0,9	-1,7	-0,7
Exceptional financing	29,6	15,6	20,9	9,6	20,4	22,0
Other financing	—	—	—	—	—	—

¹ Data on international services are preliminary

2003				2004		
I	II	III	IV	I	II	
12,6	-42,3	-5,2	10,3	-19,2	-36,1	Current Account
-0,3	-44,8	-30,4	-1,8	-36,7	-48,0	Goods and services
3,4	-41,0	-39,6	-5,5	-24,7	-26,5	Trade balance
121,3	115,4	142,1	211,6	159,0	184,1	Exports (f. o. b)
39,8	38,7	48,6	75,3	54,8	62,2	CIS
81,5	76,7	93,5	136,3	104,2	122,0	Non-CIS countries
117,9	156,3	181,7	217,1	183,6	210,6	Imports (f. o. b)
64,3	91,8	110,6	127,7	113,7	131,1	CIS
53,5	64,5	71,1	89,3	70,0	79,5	Non-CIS countries
-3,7	-3,8	9,3	3,7	-12,0	-21,5	Balance of services
27,3	34,3	46,7	46,7	39,9	40,8	Rendered services
-31,0	-38,1	-37,4	-42,9	-51,9	-62,4	Received services
-5,9	-15,9	-5,3	-32,0	-26,7	-22,4	Income
-1,7	-4,3	-0,6	-18,6	-16,3	-14,8	Direct investment income
0,2	0,1	0,0	0,0	0,1	0,0	Portfolio investment income
-1,4	-8,8	-1,9	-10,2	-7,9	-10,1	Other investment income
-2,3	-10,5	-2,6	-11,3	-8,2	-11,3	Interest in loans (schedule)
0,9	1,7	0,8	1,1	0,3	1,2	Other investment income
-3,0	-3,0	-2,8	-3,1	-2,5	2,4	Compensation of employees
18,8	18,4	30,5	44,0	44,2	34,3	Current transfers
10,6	5,9	-6,5	-14,8	-1,2	-4,1	Capital and financial account
7,3	4,6	4,0	4,6	4,3	-7,8	Capital account
7,3	4,6	4,0	4,6	4,3	-7,8	Capital transfers
3,4	1,3	-10,4	-19,4	-5,5	3,7	Financial account
4,2	1,5	5,9	33,9	15,8	102,6	Direct investment in the KR
11,1	1,3	11,9	-18,3	7,0	1,0	Portfolio investment
-5,3	-3,0	-8,4	-3,3	-6,0	-14,4	Financial derivatives
-6,7	1,5	-19,8	-31,8	-22,3	-85,5	Other investment
-27,3	-6,9	-73,4	28,9	5,9	-64,9	Assets (- accretion)
-4,9	-25,0	-42,4	22,1	-19,5	12,7	Banks
-22,4	18,1	-31,1	6,8	25,4	-77,6	Other assets
20,6	8,4	53,6	-60,6	-28,2	-20,6	Liabilities (+ accretion)
-0,4	22,5	28,5	-14,0	9,6	-15,6	Banks
9,1	1,0	23,3	-56,1	-14,1	-6,8	Loans
9,0	1,2	15,2	4,1	0,1	-6,4	General government
15,7	14,3	20,5	20,6	7,0	9,2	Disbursement
-6,7	-13,1	-5,2	-16,5	-6,8	-15,5	Amortization (schedule)
0,2	-0,2	8,1	-60,2	-14,3	-0,5	Private sector
0,2	—	8,3	—	3,0	—	Disbursement
0,0	-0,2	-0,1	-60,2	-17,2	-0,5	Amortization (schedule)
11,8	-15,1	1,7	9,5	-23,6	1,9	Other liabilities
-40,0	27,9	24,6	26,1	20,6	24,6	Net errors and omissions
-16,8	-8,5	13,0	21,6	0,3	-15,6	Overall balance
16,8	8,5	-13,0	-21,6	-0,3	15,6	Financing
3,9	2,6	-28,1	-29,3	-16,7	8,5	NBKR reserves
7,1	-8,7	9,8	-9,1	8,5	-9,2	IMF loans
5,8	14,6	5,3	16,7	7,9	16,3	Exceptional financing
—	—	—	—	—	—	Other financing

Annex I. Tables and charts

Table I.1: Balance of Payments of the Kyrgyz Republic
(standard presentation)
(in millions of US dollars)

	2000	2001	2002	2003	2003 1 half	2004 1 half
Current Account	-77,6	-16,9	-24,2	-24,6	-29,7	-55,3
Goods and services	-82,9	-4,5	-59,4	-77,2	-45,1	-84,7
Goods	4,0	39,9	-54,0	-82,7	-37,5	-51,2
Export of goods (f.o.b.)	510,9	480,3	498,1	590,3	236,7	343,1
exports	309,1	251,6	333,5	329,7	136,2	192,5
goods procured in ports	0,0	0,0	0,0	0,0	0,0	0,0
nonmonetary gold	195,3	224,6	162,8	259,6	99,9	150,0
adjustment to coverage	6,4	4,1	1,8	1,0	0,5	0,6
Import of goods (f.o.b.)	-506,9	-440,4	-552,1	-673,0	-274,2	-394,3
imports (c.i.f.)	-553,1	-466,3	-583,9	-714,0	-292,3	-420,8
valuation adjustment	51,7	31,2	37,6	48,8	21,0	29,2
goods procured in ports	-1,6	-0,9	-2,9	-2,9	-1,3	-0,9
adjustment to coverage	-3,9	-4,3	-2,9	-4,8	-1,6	-1,7
Services	-86,9	-44,4	-5,4	5,5	-7,5	-33,5
exports	61,8	80,3	142,0	154,9	61,6	80,7
imports	-148,8	-124,7	-147,4	-149,5	-69,1	-114,3
Transportation services	-53,3	-29,4	-18,5	-9,5	-4,6	-14,3
exports	16,6	20,4	37,5	42,1	18,7	21,8
imports	-69,9	-49,8	-55,9	-51,6	-23,3	-36,1
Railroad transport	-25,4	-18,3	-21,6	-18,6	-7,4	-14,5
exports	4,5	6,5	9,4	10,5	5,5	5,3
imports	-29,9	-24,8	-30,9	-29,1	-12,8	-19,9
Air transport	-8,1	-4,4	8,0	14,2	5,0	7,1
exports	7,7	9,2	22,7	26,1	10,9	14,0
imports	-15,8	-13,6	-14,7	-12,0	-5,9	-6,9
Road transport	-11,6	-5,5	-4,9	-4,2	-2,1	-4,2
exports	1,2	2,3	2,9	2,2	0,9	1,6
imports	-12,8	-7,8	-7,8	-6,4	-3,0	-5,8
Other types of transport	-8,2	-1,2	0,0	-0,9	-0,1	-2,6
exports	3,2	2,3	2,5	3,2	1,5	0,9
imports	-11,4	-3,5	-2,5	-4,1	-1,6	-3,5
Travels	-0,4	12,5	25,8	31,2	9,8	17,3
exports	15,3	24,4	35,7	47,8	14,3	38,1
imports	-15,6	-11,9	-9,9	-16,6	-4,4	-20,8
Business	-1,7	4,2	10,1	11,8	3,8	5,3
exports	6,6	10,5	15,3	20,5	6,1	16,4
imports	-8,3	-6,3	-5,2	-8,8	-2,4	-11,0
Personal	1,4	8,3	15,7	19,4	6,1	11,9
exports	8,7	13,9	20,3	27,2	8,1	21,7
imports	-7,3	-5,6	-4,6	-7,8	-2,1	-9,8
Communication services	2,3	0,7	1,9	0,4	0,5	0,6
exports	9,3	8,7	8,9	8,7	4,1	3,7
imports	-7,0	-7,9	-7,0	-8,2	-3,6	-3,2
Construction services	-2,8	-2,2	-3,6	0,2	-0,2	0,2
exports	3,1	4,5	4,9	5,7	2,8	1,1
imports	-6,0	-6,7	-8,5	-5,5	-3,1	-0,9
Insurance services	-7,5	-7,2	-8,6	-13,2	-6,2	-28,4
exports	0,5	0,1	0,2	1,2	0,1	0,0
imports	-8,0	-7,4	-8,9	-14,4	-6,2	-28,4

2003				2004		
I	II	III	IV	I	II	
12,6	-42,3	-5,2	10,3	-19,2	-36,1	Current Account
-0,3	-44,8	-30,4	-1,8	-36,7	-48,0	Goods and services
3,4	-41,0	-39,6	-5,5	-24,7	-26,5	Goods
121,3	115,4	142,1	211,6	159,0	184,1	Export of goods (f.o.b.)
67,5	68,7	73,9	119,6	91,6	100,9	exports
—	—	—	—	—	—	goods procured in ports
53,6	46,4	68,1	91,6	67,3	82,7	nonmonetary gold
0,2	0,3	0,2	0,3	0,1	0,5	adjustment to coverage
-117,8	-156,3	-181,7	-217,1	-183,6	-210,6	Import of goods (f.o.b.)
-125,5	-166,8	-191,9	-229,9	-196,1	-224,7	imports (c.i.f.)
8,6	12,4	13,7	14,1	13,4	15,8	valuation adjustment
-0,4	-0,9	-1,0	-0,6	-0,4	-0,5	goods procured in ports
-0,5	-1,1	-2,5	-0,7	-0,5	-1,2	adjustment to coverage
-3,7	-3,8	9,3	3,7	-12,0	-21,5	Services
27,3	34,3	46,7	46,7	39,9	40,8	exports
-31,0	-38,1	-37,4	-42,9	-51,9	-62,4	imports
-3,0	-1,6	-1,4	-3,6	-7,4	-6,8	Transportation services
8,0	10,7	12,0	11,4	9,0	12,8	exports
-11,1	-12,2	-13,3	-15,0	-16,4	-19,7	imports
-3,7	-3,7	-4,8	-6,5	-6,6	-8,0	Railroad transport
2,3	3,2	2,7	2,3	2,4	3,0	exports
-5,9	-6,9	-7,5	-8,8	-9,0	-10,9	imports
1,9	3,1	4,8	4,3	2,9	4,2	Air transport
4,6	6,2	8,2	7,1	5,5	8,5	exports
-2,7	-3,2	-3,3	-2,8	-2,6	-4,3	imports
-1,0	-1,1	-1,4	-0,7	-2,1	-2,1	Road transport
0,4	0,5	0,3	1,0	0,5	1,0	exports
-1,4	-1,6	-1,7	-1,7	-2,6	-3,2	imports
-0,3	0,2	—	-0,7	-1,6	-1,0	Other types of transport
0,8	0,7	0,8	0,9	0,6	0,3	exports
-1,1	-0,6	-0,8	-1,7	-2,2	-1,3	imports
3,6	6,3	13,1	8,2	9,1	8,2	Travels
5,4	8,9	16,6	16,9	19,2	18,9	exports
-1,9	-2,6	-3,5	-8,7	-10,1	-10,7	imports
1,3	2,4	5,3	2,7	2,9	2,5	Business
2,3	3,8	7,1	7,3	8,2	8,1	exports
-1,0	-1,4	-1,8	-4,6	-5,4	-5,7	imports
2,2	3,8	7,8	5,6	6,2	5,7	Personal
3,1	5,1	9,4	9,6	10,9	10,8	exports
-0,9	-1,2	-1,6	-4,1	-4,7	-5,0	imports
0,2	0,4	-1,0	0,9	0,1	0,5	Communication services
2,0	2,1	1,9	2,6	1,8	1,9	exports
-1,9	-1,7	-3,0	-1,7	-1,8	-1,4	imports
-0,2	-0,1	1,0	-0,6	0,6	-0,4	Construction services
1,3	1,6	1,2	1,7	1,1	—	exports
-1,4	-1,6	-0,2	-2,3	-0,5	-0,4	imports
-2,4	-3,8	-3,4	-3,6	-13,1	-15,3	Insurance services
—	0,1	—	1,1	—	—	exports
-2,4	-3,9	-3,5	-4,7	-13,2	-15,3	imports

Table I.1: (continued)

	2000	2001	2002	2003	2003 1 half	2004 1 half
Financial services	-3,2	-2,7	-9,0	-3,8	-1,8	-4,4
exports	1,0	0,6	3,6	0,6	0,3	0,1
imports	-4,2	-3,2	-12,5	-4,4	-2,1	-4,4
Computer and information services	-0,4	-0,5	-1,2	-2,0	-1,1	-1,4
exports	0,4	0,5	0,6	1,5	0,5	0,1
imports	-0,8	-1,0	-1,8	-3,5	-1,6	-1,5
Government services	1,0	3,5	18,4	18,6	8,9	-0,1
exports	4,9	6,9	21,9	21,2	10,4	2,3
imports	-3,9	-3,4	-3,5	-2,6	-1,5	-2,4
Business services	-22,3	-20,3	-12,3	-18,5	-12,9	-3,1
exports	8,1	10,8	26,7	20,9	9,1	10,9
imports	-30,4	-31,1	-39,0	-39,4	-22,0	-14,1
of which Technical assistance	-20,4	-21,3	-21,0	-20,2	-10,1	-10,1
Other services	-0,5	1,1	1,5	2,2	0,1	0,1
exports	2,5	3,3	2,0	5,3	1,3	2,7
imports	-3,0	-2,2	-0,5	-3,1	-1,3	-2,5
Income	-82,1	-63,6	-53,2	-59,1	-21,9	-49,1
Compensation of employees	-10,3	-10,3	-11,4	-11,9	-5,9	-0,1
Investment income	-71,7	-53,2	-41,7	-47,2	-15,9	-49,0
Direct investments	-37,2	-25,5	-15,6	-25,2	-6,0	-31,1
Distributed profit	-1,3	-0,4	-0,3	-0,1	0,0	0,0
Reinvested incomes	-8,0	-13,5	-9,0	-21,8	-3,1	-30,3
Income from debt (interests)	-27,9	-11,6	-6,3	-3,3	-2,9	-0,8
Portfolio investments	0,0	-0,1	0,3	0,2	0,2	0,1
Other investments	-34,5	-27,7	-26,4	-22,3	-10,2	-18,0
Interest on loans (schedule)	-50,1	-38,9	-31,4	-24,8	-11,4	-19,2
Monetary authorities	-2,0	-1,6	-1,2	-1,0	-0,5	-0,5
General government	-29,7	-25,8	-26,9	-23,9	-11,4	-13,8
Banks	1,3	0,4	0,5	2,0	1,4	0,3
Other sectors	-19,6	-11,9	-3,9	-1,7	-0,8	-5,1
Other investment income	15,5	11,2	5,0	2,5	1,2	1,2
Current transfers	87,4	51,1	88,4	111,7	37,2	78,5
General government	45,5	31,6	29,9	17,0	5,8	14,1
Humanitarian assistance	12,9	8,4	11,6	8,8	4,6	10,1
Technical assistance	20,0	20,0	0,0	0,0	0,0	0,0
organizations	-1,3	-1,1	-0,7	-1,3	-0,3	-0,9
Other grants	13,9	4,2	19,0	9,5	1,5	4,8
Other sectors	41,9	19,6	58,5	94,6	31,4	64,4
Workers' remittances	1,4	1,7	28,2	65,2	22,4	52,9
Inflow	2,2	3,5	30,3	70,3	25,4	57,7
Outflow	-0,9	-1,7	-2,1	-5,2	-3,0	-4,7
Other transfers	40,5	17,8	30,4	29,5	9,0	11,5
Capital and Financial Account	75,1	26,4	78,4	-14,0	41,8	9,5
Capital account	-11,4	-6,9	22,3	20,5	11,9	-3,5
Capital transfers	-11,4	-6,9	22,3	20,5	11,9	-3,5
General government	3,0	1,8	27,7	27,5	14,9	12,1
Grant in form of goods	3,0	1,8	7,7	7,5	4,9	2,1
Technical assistance	0,0	0,0	20,0	20,0	10,0	10,0
Other sectors	-14,4	-8,7	-5,4	-7,0	-3,0	-15,6
Transfers related to migration	-27,6	-9,5	-6,4	-7,6	-3,3	-16,3

2003				2004		
I	II	III	IV	I	II	
-0,6	-1,2	-0,6	-1,4	-0,3	-4,0	Financial services
0,2	0,1	0,1	0,2	0,1	—	exports
-0,8	-1,3	-0,7	-1,6	-0,4	-4,0	imports
-0,5	-0,6	-0,2	-0,7	-0,7	-0,7	Computer and information services
0,3	0,2	0,6	0,3	0,1	—	exports
-0,8	-0,8	-0,8	-1,1	-0,8	-0,7	imports
4,3	4,6	5,2	4,5	-0,3	0,2	Government services
5,1	5,3	6,3	4,5	1,0	1,3	exports
-0,8	-0,7	-1,1	—	-1,3	-1,1	imports
-5,2	-7,8	-4,1	-1,5	-0,9	-2,3	Business services
4,4	4,7	5,7	6,1	6,1	4,8	exports
-9,5	-12,5	-9,8	-7,6	-7,0	-7,1	imports
-5,1	-5,0	-5,1	-5,0	-5,1	-5,0	of which Technical assistance
0,1	-0,1	0,6	1,5	1,0	-0,9	Other services
0,5	0,8	2,2	1,9	1,5	1,2	exports
-0,4	-0,8	-1,5	-0,4	-0,5	-2,1	imports
-5,9	-15,9	-5,3	-32,0	-26,7	-22,4	Income
-3,0	-3,0	-2,8	-3,1	-2,5	2,4	Compensation of employees
-3,0	-12,9	-2,5	-28,8	-24,2	-24,8	Investment income
-1,7	-4,3	-0,6	-18,6	-16,3	-14,8	Direct investments
—	—	-0,1	—	—	—	Distributed profit
-1,4	-1,7	-0,4	-18,3	-15,8	-14,5	Reinvested incomes
-0,4	-2,5	-0,1	-0,3	-0,5	-0,3	Income from debt (interests)
0,2	0,1	—	—	0,1	—	Portfolio investments
-1,4	-8,8	-1,9	-10,2	-7,9	-10,0	Other investments
-2,1	-9,3	-2,3	-11,1	-8,0	-11,1	Interest on loans (schedule)
—	-0,5	—	-0,5	—	-0,5	Monetary authorities
-2,2	-9,1	-2,3	-10,2	-3,1	-10,7	General government
0,2	1,1	0,3	0,2	0,2	0,1	Banks
—	-0,8	-0,3	-0,6	-5,1	—	Other sectors
0,7	0,6	0,4	0,9	0,1	1,1	Other investment income
18,8	18,4	30,5	44,0	44,2	34,3	Current transfers
3,3	2,5	7,4	3,8	12,9	1,2	General government
1,9	2,7	1,6	2,7	8,3	1,8	Humanitarian assistance
—	—	—	—	—	—	Technical assistance
-0,1	-0,2	-0,4	-0,6	-0,2	-0,6	organizations
1,5	—	6,3	1,7	4,8	—	Other grants
15,5	15,9	23,1	40,2	31,3	33,1	Other sectors
9,0	13,3	20,5	22,4	22,7	30,2	Workers' remittances
9,8	15,5	21,5	23,4	25,0	32,7	Inflow
-0,8	-2,2	-1,1	-1,1	-2,2	-2,5	Outflow
6,4	2,6	2,6	17,8	8,6	2,9	Other transfers
27,4	14,4	-19,4	-36,4	-1,8	11,3	Capital and Financial Account
7,3	4,6	4,0	4,6	4,3	-7,8	Capital account
7,3	4,6	4,0	4,6	4,3	-7,8	Capital transfers
8,8	6,1	6,0	6,6	5,6	6,5	General government
3,8	1,1	1,0	1,6	0,6	1,5	Grant in form of goods
5,0	5,0	5,0	5,0	5,0	5,0	Technical assistance
-1,5	-1,5	-2,0	-1,9	-1,3	-14,3	Other sectors
-1,6	-1,7	-2,1	-2,2	-1,8	-14,4	Transfers related to migration

Table I.1: (continued)

	2000	2001	2002	2003	2003	2004
					1 half	1 half
Inflow	6,6	1,7	0,0	0,2	0,0	-10,8
Outflow	-34,2	-11,3	-6,4	-7,8	-3,3	-5,5
Forgiveness of debt	6,1	0,0	0,0	0,0	0,0	0,0
Other transfers	7,1	0,8	1,0	0,6	0,3	0,7
Financial account	86,5	33,3	56,1	-34,5	29,9	13,0
Direct investment	-6,9	-1,1	4,7	45,5	5,7	117,8
Abroad	-4,5	-6,1	0,0	0,0	0,0	86,7
In the Kyrgyz Republic	-2,4	5,0	4,7	45,5	5,7	31,1
Inflow	0,0	0,0	115,6	144,0	43,3	64,6
Outflow	0,0	0,0	-111,0	-98,4	-37,6	-33,5
In the share capital	17,6	12,3	4,9	14,9	1,7	-0,8
Inflow	0,0	0,0	26,1	23,4	4,8	6,3
Outflow	0,0	0,0	-21,3	-8,5	-3,1	-7,1
Reinvestment income	8,0	13,5	9,0	21,8	3,1	30,3
Other capital	-28,0	-20,8	-9,2	8,8	0,9	2,0
Inflow	0,0	0,0	80,5	98,8	35,4	28,1
Outflow	0,0	0,0	-89,7	-89,9	-34,5	-26,5
Portfolio investment	-1,3	1,2	-12,0	6,0	12,4	8,1
Assets	-1,6	1,2	-2,5	1,1	7,5	8,0
Debt securities	-1,6	1,2	-2,5	1,1	7,5	8,0
Liabilities	0,3	0,0	-9,5	5,0	4,9	0,0
Equity capital	0,3	0,0	-9,5	5,0	4,9	0,0
Debt securities	0,0	0,0	0,0	0,0	0,0	0,0
Financial derivatives	25,8	17,6	-5,1	-20,0	-8,3	-20,5
Assets	25,8	17,6	-5,1	-20,0	-8,3	-20,5
Other sectors	25,8	17,6	-5,1	-20,0	-8,3	-20,5
Other investments	90,1	31,9	112,4	-15,3	13,6	-84,2
Assets	-27,3	-4,0	21,5	-78,7	-34,2	-59,0
Currency and deposits	-3,0	-1,3	-27,3	-58,5	-37,7	-75,8
Banks	-1,6	-16,5	-42,3	-50,2	-29,9	-6,8
Other sectors	-1,5	15,1	15,0	-8,4	-7,8	-69,0
Trade credits	-32,8	-2,8	24,6	-18,2	2,7	16,8
General government	-31,8	-6,6	14,8	-14,5	-0,7	10,1
Long - term	-21,3	-4,4	9,9	-9,7	-0,4	6,7
Short - term	-10,5	-2,2	4,9	-4,8	-0,2	3,3
Other sectors	-1,0	3,8	9,8	-3,7	3,4	6,7
Long - term	-0,6	2,8	6,6	-0,5	3,5	4,5
Short - term	-0,5	1,0	3,2	-3,2	-0,1	2,2
Other assets	8,5	0,2	24,2	-2,0	0,9	0,0
Monetary authorities	8,6	0,0	23,9	-2,1	0,7	0,0
General government	-0,1	0,2	0,3	0,1	0,1	0,0
Liabilities	117,4	35,9	90,9	63,4	47,7	-25,2
Currency and deposits	-1,0	1,0	26,0	41,5	27,1	-5,8
Banks	-1,0	1,0	26,0	41,5	27,1	-5,8
Trade credits	26,0	0,7	12,7	9,9	-2,1	-21,0
General government	3,9	19,3	7,6	16,5	7,4	-12,0
Long - term	2,7	13,3	5,3	11,4	5,1	-8,2
Short - term	1,2	6,0	2,4	5,1	2,3	-3,7
Other sectors	22,2	-18,6	5,1	-6,5	-9,5	-9,0
Long - term	14,4	-11,9	3,5	-10,0	-11,1	-6,5
Short - term	7,7	-6,7	1,6	3,4	1,5	-2,5
Loans	48,9	18,5	33,4	-28,4	3,5	-21,8
Disbursement	152,9	148,5	299,3	241,7	62,2	107,6
Monetary authorities	18,7	14,9	15,4	29,5	16,1	14,0

2003				2004		
I	II	III	IV	I	II	
—	—	—	0,2	—	-10,8	Inflow
-1,6	-1,7	-2,1	-2,4	-1,8	-3,6	Outflow
—	—	—	—	—	—	Forgiveness of debt
0,1	0,2	0,1	0,3	0,5	0,2	Other transfers
20,1	9,8	-23,4	-41,0	-6,1	19,1	Financial account
4,2	1,5	5,9	33,9	15,4	102,4	Direct investment
—	—	—	—	—	86,7	Abroad
4,2	1,5	5,9	33,9	15,4	15,7	In the Kyrgyz Republic
21,1	22,2	34,2	66,4	30,9	33,7	Inflow
-16,8	-20,7	-28,3	-32,5	-15,5	-18,0	Outflow
-1,2	2,9	10,7	2,5	-3,5	2,7	In the share capital
0,3	4,5	11,6	7,1	1,6	4,7	Inflow
-1,5	-1,7	-0,9	-4,5	-5,1	-2,0	Outflow
1,4	1,7	0,4	18,3	15,8	14,5	Reinvestment income
4,0	-3,1	-5,2	13,1	3,5	-1,5	Other capital
19,4	15,9	22,3	41,1	13,5	14,5	Inflow
-15,4	-19,1	-27,4	-28,0	-10,4	-16,0	Outflow
11,1	1,3	11,9	-18,3	7,0	1,0	Portfolio investment
6,2	1,3	0,6	-7,1	7,0	1,0	Assets
6,2	1,3	0,6	-7,1	7,0	1,0	Debt securities
4,9	—	11,2	-11,2	—	—	Liabilities
4,9	—	11,2	-11,2	—	—	Equity capital
—	—	—	—	—	—	Debt securities
-5,3	-3,0	-8,4	-3,3	-6,0	-14,4	Financial derivatives
-5,3	-3,0	-8,4	-3,3	-6,0	-14,4	Assets
-5,3	-3,0	-8,4	-3,3	-6,0	-14,4	Other sectors
6,2	7,4	-4,7	-24,1	-5,8	-78,4	Other investments
-27,3	-6,9	-73,4	28,9	5,9	-64,9	Assets
-16,9	-20,9	-59,3	38,5	-12,2	-63,6	Currency and deposits
-4,9	-25,0	-42,4	22,1	-19,5	12,7	Banks
-12,0	4,1	-17,0	16,4	7,3	-76,3	Other sectors
-10,7	13,4	-14,0	-6,9	18,1	-1,3	Trade credits
-6,5	5,9	-9,7	-4,2	10,9	-0,8	General government
-4,4	3,9	-6,5	-2,8	7,3	-0,5	Long - term
-2,2	1,9	-3,2	-1,4	3,6	-0,3	Short - term
-4,2	7,6	-4,3	-2,8	7,2	-0,5	Other sectors
-2,8	6,3	-2,1	-1,9	4,9	-0,4	Long - term
-1,4	1,3	-2,1	-0,9	2,4	-0,2	Short - term
0,3	0,5	-0,1	-2,7	—	—	Other assets
0,3	0,5	-0,2	-2,6	—	—	Monetary authorities
0,1	0,1	0,1	-0,1	—	—	General government
33,4	14,3	68,7	-53,0	-11,7	-13,5	Liabilities
6,0	21,1	28,2	-13,8	8,9	-14,7	Currency and deposits
6,0	21,1	28,2	-13,8	8,9	-14,7	Banks
12,8	-14,9	2,1	9,9	-23,2	2,3	Trade credits
11,7	-4,3	3,6	5,4	-11,9	-0,1	General government
8,1	-2,9	2,5	3,8	-8,2	—	Long - term
3,6	-1,3	1,1	1,7	-3,7	—	Short - term
1,1	-10,6	-1,5	4,4	-11,3	2,4	Other sectors
-1,3	-9,8	-2,2	3,3	-8,8	2,4	Long - term
2,4	-0,9	0,7	1,1	-2,5	—	Short - term
9,8	-6,3	33,5	-65,4	-4,9	-16,9	Loans
37,8	24,3	79,3	100,2	75,7	31,8	Disbursement
16,1	—	13,4	—	14,0	—	Monetary authorities

Table I.1: (continued)

	2000	2001	2002	2003	2003 1 half	2004 1 half
Long - term	18,7	14,9	15,4	29,5	16,1	14,0
General government	127,4	110,2	88,1	71,1	30,0	16,1
Long - term	127,4	110,2	88,1	71,1	30,0	16,1
Short - term	0,0	0,0	0,0	0,0	0,0	0,0
Banks	2,9	19,1	193,9	132,7	15,9	74,5
Long - term	0,0	0,0	0,0	0,0	0,0	0,0
Short - term	0,0	0,0	193,9	132,7	15,9	74,5
Other sectors	3,9	4,3	1,9	8,4	0,2	3,0
Long - term	0,0	0,0	1,9	8,4	0,2	3,0
Short - term	0,0	0,0	0,0	0,0	0,0	0,0
Amortization (schedule)	-104,0	-130,0	-266,0	-270,0	-58,6	-129,4
Monetary authorities	-11,4	-17,0	-21,4	-30,4	-17,8	-14,6
Long - term	0,0	0,0	-21,4	-30,4	-17,8	-14,6
General government	-34,5	-43,1	-37,3	-41,6	-19,8	-22,4
Long - term	0,0	0,0	-37,3	-41,6	-19,8	-22,4
Short - term	0,0	0,0	0,0	0,0	0,0	0,0
Banks	-2,3	-16,2	-187,2	-137,5	-20,9	-74,7
Long - term	0,0	0,0	0,0	0,0	0,0	0,0
Short - term	0,0	0,0	-187,2	-137,5	-20,9	-74,7
Other sectors	-55,8	-53,8	-20,1	-60,5	-0,2	-17,7
Long - term	0,0	0,0	-20,1	-60,5	-0,2	-17,7
Short - term	0,0	0,0	0,0	0,0	0,0	0,0
Arrears	29,6	15,6	20,9	42,4	20,4	24,2
General government	28,4	15,6	21,5	41,8	19,8	23,7
Other sectors	1,2	0,0	-0,6	0,6	0,6	0,4
Other liabilities	13,9	0,1	-2,1	-2,0	-1,2	-0,8
Monetary authorities	0,0	0,0	0,0	0,0	0,0	0,0
Other sectors	13,9	0,1	-2,1	-2,0	-1,2	-0,8
Reserve assets	-21,2	-16,3	-43,8	-50,8	6,5	-8,2
Monetary gold	0,0	0,0	0,0	0,0	0,0	0,0
SDR	4,3	0,6	0,0	4,6	2,6	-5,0
Foreign exchange	-25,5	-16,9	-43,8	-55,5	3,9	-3,2
Net errors and omissions	2,5	-9,4	-54,2	38,6	-12,1	45,8
Overall Balance	0,0	0,0	0,0	0,0	0,0	0,0

Note:

Long-term investments are investments in financial assets, whose initial maturity was set up, in compliance with a contract, as more than one year or has never been stipulated.

Short-term investments are investments in financial assets, with maturity of one year or less than one year, pursuant to a contract, or paid as short notice.

2003				2004		
I	II	III	IV	I	II	
16,1	—	13,4	—	14,0	—	Long - term
15,7	14,3	20,5	20,6	7,0	9,2	General government
15,7	14,3	20,5	20,6	7,0	9,2	Long - term
—	—	—	—	—	—	Short - term
5,9	10,0	37,2	79,6	51,8	22,7	Banks
—	—	—	—	—	—	Long - term
5,9	10,0	37,2	79,6	51,8	22,7	Short - term
0,2	—	8,3	—	3,0	—	Other sectors
0,2	—	8,3	—	3,0	—	Long - term
—	—	—	—	—	—	Short - term
-28,0	-30,6	-45,8	-165,6	-80,7	-48,8	Amortization (schedule)
-9,0	-8,7	-3,6	-9,1	-5,4	-9,2	Monetary authorities
-9,0	-8,7	-3,6	-9,1	-5,4	-9,2	Long - term
-6,7	-13,1	-5,2	-16,5	-6,8	-15,5	General government
-6,7	-13,1	-5,2	-16,5	-6,8	-15,5	Long - term
—	—	—	—	—	—	Short - term
-12,2	-8,6	-36,9	-79,8	-51,1	-23,6	Banks
—	—	—	—	—	—	Long - term
-12,2	-8,6	-36,9	-79,8	-51,1	-23,6	Short - term
—	-0,2	-0,1	-60,2	-17,2	-0,5	Other sectors
—	-0,2	-0,1	-60,2	-17,2	-0,5	Long - term
—	—	—	—	—	—	Short - term
5,8	14,6	5,3	16,7	7,9	16,3	Arrears
5,5	14,3	5,2	16,9	7,4	16,3	General government
0,3	0,3	0,1	-0,2	0,5	-0,1	Other sectors
-1,0	-0,2	-0,4	-0,4	-0,4	-0,4	Other liabilities
—	—	—	—	—	—	Monetary authorities
-1,0	-0,2	-0,4	-0,4	-0,4	-0,4	Other sectors
3,9	2,6	-28,1	-29,3	-16,7	8,5	Reserve assets
—	—	—	—	—	—	Monetary gold
1,6	1,0	1,0	1,0	-3,0	-2,0	SDR
2,3	1,6	-29,1	-30,3	-13,7	10,5	Foreign exchange
-40,0	27,9	24,6	26,1	21,0	24,8	Net errors and omissions
0,0	0,0	0,0	0,0	0,0	0,0	Overall Balance

Table I.2: Structure of Export by the HS sections¹
(in millions of US dollars)

Group of Products	2000	2001	2002	2003	I half 03	I half 04
Total	504,5	476,2	485,5	581,7	233,6	338,2
Live animals and animal products	1,8	3,2	3,8	8,1	3,0	5,5
Vegetable products	14,4	13,3	19,9	18,9	8,1	9,3
Fats and animal or vegetable oil	0,5	0,0	0,2	0,1	0,1	—
Food prod., strong & soft drinks and vinegar,tobacco	37,3	32,7	30,1	25,8	14,0	23,7
Mineral products ²	86,8	58,4	62,4	74,7	26,5	35,4
Products of chemistry and related industries	14,5	18,0	25,2	9,7	4,0	11,1
Plastics and plastic goods, rubber and rubber goods	6,1	4,0	5,1	13,1	7,0	7,6
Hides, leather, natural fur, harness and saddle products	7,6	10,3	24,2	5,4	2,3	2,1
Timber and timber products, charcoal, cork	0,6	0,3	0,4	0,4	0,1	0,3
Paper stuff from wooden pulp or other materials	0,4	1,2	0,6	1,4	0,6	1,1
Textile and textile products	42,8	29,5	59,8	69,9	26,6	32,7
Foot-wear, headgear, umbrellas, canes and whips	0,2	0,5	0,2	0,7	0,1	0,4
Products of stone, gyps, cement, asbestos, mica	4,2	5,2	8,9	26,2	8,4	15,4
Precious metals, pearls, precious stones	196,9	226,7	164,8	262,1	101,3	151,5
Non-precious metals and products from them	34,8	15,3	23,4	19,8	10,6	19,0
Machines, equipment and mechanisms	33,4	28,5	26,9	28,2	12,8	14,1
Terrestrial, air, marine transport and their parts	14,9	26,5	21,2	14,5	7,0	6,8
Optic devices and appliances, photography & cinematograph	3,3	1,3	1,8	1,1	0,3	0,9
Other special industrial products	3,3	0,3	5,4	0,3	0,2	0,2
Various industrial goods	0,6	0,9	1,0	1,4	0,6	1,1
Pieces of art, collection and antique goods	0,1	0,0	0,2	—	—	—

¹ source: NSC, in f.o.b. prices

² including energy products

Table I.3: Structure of Export by the SITC sections¹
(in millions of US dollars)

Group of Products	2000	2001	2002	2003	I half 03	I half 04
Total	504,5	476,2	485,5	581,7	233,6	338,2
Food products and live animals	17,6	19,3	31,2	37,5	14,3	28,3
Drinks and tobacco	33,8	28,2	21,0	13,6	9,7	8,5
Non-food raw products, excluding fuel	76,1	46,2	82,5	67,9	28,4	34,1
Mineral fuel, lubricants, and oils	82,5	54,5	58,2	67,3	24,2	29,8
Animal and vegetable oils, fats and wax	0,4	0,0	0,2	0,1	0,1	0,0
Chemical and similar products, not included in other categories	14,8	18,2	25,5	9,8	4,0	11,3
Industrial goods, classified by types of material	18,8	19,5	36,1	57,1	22,4	35,4
Machines and transportation equipment	49,1	55,6	48,8	43,4	20,1	21,4
Various finished products	16,1	10,2	19,3	25,3	10,6	19,5
Goods and transactions, not included in other ISCC categories	195,3	224,6	162,8	259,7	99,9	150,0

¹ source: NSC, in F.O.B. prices, excluding exports by "shuttle-traders" (adjustment)

Table I.4: Structure of Import by the HS sections¹
(in millions of US dollars)

Group of Products	2000	2001	2002	2003	I half 03	I half 04
Total	554,6	467,2	586,8	717,0	293,6	421,7
Live animals and animal products	4,3	3,3	3,3	5,9	2,6	3,1
Vegetable products	42,3	15,5	21,7	16,2	7,9	10,0
Fats and animal or vegetable oil	3,7	3,9	5,0	10,8	6,5	6,6
Food prod., strong & soft drinks & vinegar and tobacco	31,0	35,8	47,4	59,5	25,1	36,3
Mineral products ²	133,8	129,5	163,4	195,6	77,2	121,3
Products of chemistry and related industries	59,3	67,3	78,4	91,7	31,6	58,9
Plastics and plastic goods, rubber and rubber goods	22,8	22,0	24,9	39,3	15,3	24,8
Hides, leather, natural fur, harness and saddle products	2,3	4,1	2,6	0,4	0,2	0,2
Timber and timber products, charcoal, cork	7,0	5,2	6,6	10,5	4,6	7,8
Paper stuff from wooden pulp or other materials	15,8	12,8	13,4	17,5	7,6	10,1
Textile and textile products	35,2	28,8	38,9	47,3	17,8	20,9
Food-wear, headgear, umbrellas, fold. umbr-s and canes	5,2	5,1	5,9	7,6	2,4	2,6
Products of stone, gyps, cement, asbestos, mica	4,9	5,1	6,2	8,6	3,8	4,4
Precious metals, pearls, precious stones	0,2	0,1	0,1	0,1	0,0	0,0
Non-precious metals and products from them	27,6	27,3	29,7	43,5	17,1	27,3
Machines, equipment and mechanisms	98,2	56,5	89,6	89,1	40,3	46,8
Terrestrial, air, marine transport and their parts	41,8	31,8	32,1	51,2	21,5	30,4
Optic.devices and appliances, photography&cinematograph	10,8	8,0	10,6	12,2	8,1	6,0
Other special industrial products	0,1	0,1	0,1	0,1	0,1	0,1
Various industrial goods	8,3	5,0	6,8	10,0	3,8	4,3
Pieces of art, collection and antique goods	—	—	0,2	—	—	—

¹ source: NSC, in c.i.f. prices

² including energy products

Table I.5: Structure of Import by the SITC sections¹
(in millions of US dollars)

Group of Products	2000	2001	2002	2003	I half 03	I half 04
Total	554,6	467,2	586,8	717,0	293,6	421,7
Food products and live animals	60,5	35,8	53,2	56,3	24,2	34,7
Drinks and tobacco	17,3	18,7	19,2	26,1	11,6	15,1
Non-food raw products, excluding fuel	14,1	16,8	23,8	26,8	12,3	15,8
Mineral fuel, lubricants, and oils	129,1	121,0	152,0	180,5	70,8	113,8
Animal and vegetable oils, fats and wax	3,0	3,1	3,8	9,2	5,8	5,6
Chemical and similar products, not inc.in other categories	66,6	75,5	87,0	104,8	36,7	70,4
Industrial goods, classified by types of material	77,6	70,7	76,4	111,8	44,3	64,0
Machines and transportation equipment	141,8	89,3	122,6	142,5	63,7	78,3
Various finished products	44,5	36,3	48,7	58,9	24,2	23,9
Goods and transactions, not included in other ISCC categories	—	—	0,0	0,0	—	—

¹ source: NSC, in c.i.f. prices, excluding imports by "shuttle-traders" (adjustment)

Table I.6: Functional Structure of Export¹*(in millions of US dollars)*

	2000	2001	2002	2003	I half 03	I half 04
Total	504,5	476,2	485,5	581,7	233,6	338,2
Consumption	57,5	57,3	76,5	98,8	40,9	67,5
Raw materials	121,1	88,6	132,1	86,2	38,3	55,8
Interim goods	212,8	244,2	187,4	304,4	118,4	173,3
Investment goods	30,5	31,5	31,3	24,9	11,9	11,9
Energy products	82,5	54,5	58,2	67,3	24,2	29,8

¹ according to the classification worked out by the NBKR and based on the NSC data on export at f. o. b. prices**Table I.7: Geographic Structure of Export¹***(in millions of US dollars)*

	2000	2001	2002	2003	I half 03	I half 04
Total	504,5	476,2	485,5	581,7	233,6	338,2
CIS countries	207,4	168,5	168,8	201,4	78,0	116,4
Russia	65,1	64,5	80,0	97,0	40,2	57,3
Kazakhstan	33,4	39,0	36,8	57,1	19,9	36,5
Tadfikistan	7,5	6,7	10,2	18,9	8,3	9,6
Uzbekistan	89,4	48,0	27,8	16,3	4,8	6,6
Ukraine	1,1	2,9	4,3	5,4	2,1	3,0
Belarus	3,0	3,2	1,3	1,5	1,0	0,8
Other CIS countries	7,9	4,2	8,3	5,2	1,7	2,7
Non-CIS countries	297,1	307,6	316,8	380,3	155,6	221,8
Europe	223,4	251,4	131,0	152,2	63,2	71,4
Switzerland	34,1	124,2	96,4	117,9	49,9	56,8
Germany	144,6	94,4	1,8	3,0	1,0	1,0
Great Britain	18,8	14,1	0,9	0,1	0,0	0,1
Asia	68,8	47,8	144,8	190,5	74,8	125,5
UAE	1,4	0,5	68,8	144,3	51,3	94,5
China	44,1	19,4	41,1	23,3	12,6	19,7
Turkey	7,2	13,8	16,4	11,0	3,8	6,2
America	2,9	8,3	41,0	37,5	17,6	24,9
Canada	0,1	1,2	4,9	31,0	12,4	23,6
USA	2,8	7,1	36,1	6,5	5,3	1,3
Other non-CIS countries	2,0	0,1	0,0	0,1	0,1	0,1

¹ source: NSC, in f.o.b. prices**Table I.8: Export of goods by individuals¹***(in millions of US dollars)*

	2000	2001	2002	2003	I half 03	I half 04
Total	20,3	28,1	23,4	22,9	8,5	9,4
included in the official statistical data	13,9	24,0	21,6	21,9	8,3	9,2
CIS	8,0	11,1	11,4	19,1	6,5	8,4
Non-CIS countries	5,9	12,9	10,2	2,8	1,8	0,8
evaluative	6,4	4,1	1,8	1,0	0,3	0,2
CIS	6,3	3,7	1,6	1,0	0,3	0,1
Non-CIS countries	0,1	0,4	0,2	0,0	0,0	0,0

¹ source: NSC, in f. o. b. prices

Table I.9: Functional Structure of Import¹*(in millions of US dollars)*

	2000	2001	2002	2003	I half 03	I half 04
Total	554,6	467,2	586,8	717,0	293,6	421,7
Consumption	205,9	167,7	193,8	255,9	100,4	142,8
Raw materials	18,7	31,8	40,2	34,7	15,0	30,3
Interim goods	93,7	89,0	85,1	117,6	47,6	69,2
Investment goods	107,2	57,7	115,6	128,0	59,8	65,6
Energy products	129,2	121,0	152,0	180,8	70,8	113,8

¹ in according with classification worked out at the NBKR on the basis of NSC import data in c. i. f prices**Table I.10: Geographic Structure of Import¹***(in millions of US dollars)*

	2000	2001	2002	2003	I half 03	I half 04
Total	554,6	467,2	586,7	717,0	293,6	421,7
CIS countries	299,0	257,0	322,5	410,5	162,6	256,7
Russia	132,6	85,1	116,7	176,1	68,8	121,2
Kazakhstan	57,4	81,8	123,9	170,9	65,9	97,1
Uzbekistan	75,1	66,7	60,1	39,2	18,4	25,5
Ukraine	7,0	6,2	7,8	12,6	4,9	9,2
Belarus	3,9	6,0	5,1	5,9	2,0	1,5
Turkmenistan	18,7	9,0	1,7	0,4	0,1	0,4
Tajikistan	1,9	1,5	3,5	3,1	1,7	1,0
Other CIS countries	2,4	0,7	3,6	2,3	0,9	0,7
Non-CIS countries	255,6	210,3	264,2	306,5	131,0	165,1
Europe	82,6	66,9	93,1	99,0	47,3	55,8
Germany	25,2	24,3	31,4	38,2	16,9	22,2
Great Britain	5,6	4,8	2,8	1,3	1,5	2,2
Switzerland	3,1	1,2	3,5	2,5	1,6	1,3
Asia	106,8	101,3	108,4	148,8	58,2	76,0
China	36,9	48,5	59,0	77,7	27,4	37,2
Turkey	26,8	15,8	17,0	26,0	13,5	11,8
UAE	7,0	6,8	7,3	7,8	3,7	3,9
America	65,6	41,5	62,0	58,0	25,2	33,1
Canada	53,8	26,8	47,4	47,9	21,6	27,3
USA	11,3	10,9	9,0	8,3	2,5	5,1
Other non-CIS countries	0,6	0,6	0,5	0,2	0,1	0,0

¹ source: NSC, in c.i.f. prices; excluding imports by "shuttle traders" (adjustment)**Table I.11: Import of goods by individuals¹***(in millions of US dollars)*

	2000	2001	2002	2003	I half 03	I half 04
Total	56,7	50,9	59,5	80,4	28,2	39,4
included in official statistics	52,7	46,6	56,6	75,6	26,6	38,3
CIS	19,3	7,0	5,6	7,0	2,8	3,1
Non-CIS countries	33,4	39,6	51,0	68,6	23,7	35,2
evaluative	3,9	4,3	2,9	4,8	1,6	1,1
CIS	3,5	3,6	2,3	3,2	1,0	0,6
Non-CIS countries	0,4	0,7	0,6	1,7	0,6	0,5

¹ source: NSC, in c. i. f. prices

Table I.12: Export of Major Types of Products¹

<i>Products</i>	<i>unit of measurement.</i>	2002		2003	
		<i>in kind</i>	<i>mil. US\$</i>	<i>in kind</i>	<i>mil. US\$</i>
Total			485,5		581,7
Milk products and bird's eggs			5,7		9,4
Cereals and cereals products	<i>thou tons</i>	4,8	0,8	10,1	1,6
Vegetables and Fruits	<i>thou tons</i>	104,9	16,2	103,3	14,6
Sugar, sugar-ware and honey	<i>thou tons</i>	17,3	5,8	24,6	8,7
Coffee,tea,cocoa and spices	<i>thou tons</i>	1,2	2,2	1,0	2,5
Beverage foods			0,4		0,8
Tobacco and tobacco products			20,7		12,8
Raw tobacco and tobacco waste	<i>thou tons</i>	23,9	19,8	14,3	12,5
Cattle hides, hide and peltry			19,3		8,2
Oil seeds and oil fruits	<i>thou tons</i>	0,1	0,0	0,3	0,1
Textile fibers	<i>thou tons</i>	64,9	48,1	45,5	45,8
Cotton	<i>thou tons</i>	62,6	45,3	43,4	43,2
Wool	<i>thou tons</i>	2,2	2,4	1,9	2,0
Raw fertilizers			2,3		1,3
Stone, sand and gravel	<i>thou tons</i>	325,6	1,1	193,9	0,8
Metal ores and scrap	<i>thou tons</i>	215,0	11,0	302,6	10,6
Primary goods			1,4		1,5
Oil and Oil products	<i>thou tons</i>	97,7	35,4	137,7	47,9
Electric energy	<i>mil.kwh</i>	1 062,4	22,0	1 716,2	19,2
Inorganic chemical agents	<i>thou tons</i>	5,6	23,6	3,8	8,4
Dye and tanning materials	<i>thou tons</i>	0,7	0,3	0,5	0,2
Paper, cardboard and products from these materials	<i>thou tons</i>	1,0	0,5	2,1	1,3
Textile yarn and cloth			6,1		9,5
Products from non-metallic mineral resources			10,4		32,1
Lime and cement			7,3		13,8
Non-ferrous metals			7,0		7,3
Various imperfect metals	<i>thou tons</i>	1,2	1,9	0,8	0,9
Other metal products			6,2		2,7
Energy generating machinery and equipment			0,9		1,0
Machinery for specific sectors			3,4		5,7
Metal processing machines			0,6		0,6
Non-specific machinery and equipment			4,0		3,6
Communication and sound recording equipment			2,5		0,3
Electric machinery and devices, their components			16,3		17,8
Cars			20,5		12,5
Motor vehicles	<i>pieces</i>	64,0	0,5	69,0	0,4
Trucks	<i>pieces</i>	106,0	0,5	249,0	1,3
Other cars	<i>pieces</i>	2 780,0	11,3	1 242,0	3,6
Clothes and accessories			5,8		14,9
Special instruments and devices			1,5		1,1
Finished products not included in other categories			11,0		7,8
Nonmonetary gold	<i>mil.gram</i>	17,4	162,8	22,1	259,7

¹ in f.o.b. prices, excluding exports by "shuttle traders" (adjustment)

I'03		I'04		unit of measur.	Products
<i>in kind</i>	<i>mil. US\$</i>	<i>in kind</i>	<i>mil. US\$</i>		
	233,6		338,2		Total
	4,0		4,5		Milk products and bird's eggs
6,1	0,8	0,5	0,3	<i>thou tons</i>	Cereals and cereals products
17,5	5,1	32,8	6,6	<i>thou tons</i>	Vegetables and Fruits
7,5	2,7	37,8	13,6	<i>thou tons</i>	Sugar, sugar-ware and honey
0,6	1,4	0,6	1,3	<i>thou tons</i>	Coffee,tea,cocoa and spices
	0,3		1,6		Beverage foods
	9,4		6,9		Tobacco and tobacco products
9,9	9,1	5,4	6,9	<i>thou tons</i>	Raw tobacco and tobacco waste
	4,9		3,0		Cattle hides, hide and peltry
0,2	0,0	2,6	0,7	<i>thou tons</i>	Oil seeds and oil fruits
18,2	16,0	15,8	16,6	<i>thou tons</i>	Textile fibers
17,8	15,3	14,7	15,6	<i>thou tons</i>	Cotton
0,4	0,4	1,1	1,0	<i>thou tons</i>	Wool
	0,5		1,8		Raw fertilizers
30,7	0,2	369,6	1,2	<i>thou tons</i>	Stone, sand and gravel
150,0	5,9	23,2	11,0	<i>thou tons</i>	Metal ores and scrap
	1,0		0,9		Primary goods
58,8	20,7	71,4	23,4	<i>thou tons</i>	Oil and Oil products
261,1	3,4	848,6	6,2	<i>mil.kwh</i>	Electric energy
1,7	3,6	6,7	10,2	<i>thou tons</i>	Inorganic chemical agents
0,2	0,1	0,7	0,3	<i>thou tons</i>	Dye and tanning materials
1,0	0,5	1,5	1,0	<i>thou tons</i>	Paper, cardboard and products from these materials
	4,1		5,1		Textile yarn and cloth
	10,2		19,1		Products from non-metallic mineral resources
	5,1		8,7		Lime and cement
	3,9		6,3		Non-ferrous metals
0,4	0,4	0,3	0,3	<i>thou tons</i>	Various imperfect metals
	1,5		1,6		Other metal products
	0,6		0,8		Energy generating machinery and equipment
	3,3		1,9		Machinery for specific sectors
	0,2		0,2		Metal processing machines
	1,5		2,4		Non-specific machinery and equipment
	0,1		0,2		Communication and sound recording equipment
	7,5		9,1		Electric machinery and devices, their components
	6,4		6,5		Cars
18,0	0,1	1,0	0,1	<i>pieces</i>	Motor vehicles
194,0	0,9	35,0	0,2	<i>pieces</i>	Trucks
618,0	2,0	43,0	1,4	<i>pieces</i>	Other cars
	6,5		11,2		Clothes and accessories
	0,3		0,9		Special instruments and devices
	3,3		6,4		Finished products not included in other categories
8,9	99,9	11,6	150,0	<i>mil.gram</i>	Nonmonetary gold

Table I.13: Import of Major Types of Products¹

Products	unit of measur.	2002		2003	
		in kind	mil. US\$	in kind	mil. US\$
Total			586,8		717,0
Cereals and cereals products	thou tons	190,4	20,4	115,7	14,8
Sugar, sugar-ware and honey	thou tons	48,0	15,3	43,0	14,5
Coffee, tea, cocoa, spicery	thou tons	6,6	7,3	8,6	9,6
Beverages			9,6		14,4
Tobacco and tobacco products			9,5		11,6
Raw tobacco and tobacco waste	thou tons	1,0	1,7	1,4	2,3
Finished tobacco	thou tons	1 279,4	7,8	1 583,3	9,3
Mineral and raw fertilizers			5,9		9,3
Coal, coke and briquets	thou tons	888,2	13,9	1 063,9	22,1
Oil and Oil products	thou tons	386,8	85,6	514,1	126,1
Petroleum oils	thou tons	10,4	0,8	2,3	0,3
Oil products	thou tons	365,5	83,0	496,9	123,6
Gasoline for motor vehicles	thou tons	152,8	24,3	209,4	46,5
Kerosene	thou tons	129,8	42,5	169,6	53,4
Diesel fuel	thou tons	58,3	11,8	73,8	17,0
Other Oil products	thou tons	17,7	1,1	34,6	2,1
Natural gas	mil.m ³	855,7	41,8	704,0	30,8
Electric energy	mil.kwh	384,9	9,7	108,1	0,5
Vegetable oils and fats	thou tons	6,4	3,5	9,0	6,0
Organic chemicals			4,5		2,4
Other carbohydrates	thou tons	0,1	0,1	0,0	0,1
Nonorganic chemicals	thou tons	76,8	19,0	61,7	11,3
Medicaments	thou tons	0,9	24,3	2,3	34,6
Volatile oils and perfumery	thou tons	16,6	11,7	24,2	17,2
Fertilizers	thou tons	29,2	2,6	44,6	4,7
Primary form plastic	thou tons	6,5	6,3	10,1	10,3
Chemicals and chemical products			6,5		9,7
Rubber goods			10,9		17,2
Rubber tire casing	mil.pieces	630,3	9,9	799,5	16,1
Paper, cardboard and paper products	thou tons	15,0	10,7	18,2	14,8
Textile yarn and cloth			16,3		22,3
Wrought artificial and textile cloth	mil.sq.m	48,4	9,7	55,2	13,6
Products from nonmetallic mineral resources			6,9		10,2
Cast iron and steel	thou tons	30,9	10,7	38,2	17,7
Metal products			10,8		17,3
Base metals produce	thou tons	11,7	7,6	15,5	10,3
Energy generating machinery and equipment			1,8		3,6
Machinery designated for specific sectors			50,4		34,7
Machinery and equipments for civil construction			12,4		6,9
Machinery for textile and leather industry			0,5		1,0
Machinery for food processing			0,7		4,6
Working machines, equipment for specific sectors of industry			21,2		16,3
Non-specific machinery and equipment			8,6		13,4
Office appliances and equipment for data processing			5,8		6,9
Machinery for automatic processing	thou pieces	46,2	4,0	41,9	4,5
Equipment for electric communication			10,5		13,1
Electric machines and devices			16,2		17,5
Electric devices for contact locking and breaking			5,3		1,1
Electric distribution equipment	thou tons	0,8	1,9	1,5	3,3
Cars			26,0		41,5
Motor vehicles	pieces	743,0	4,0	1 051,0	6,1
Trucks	pieces	184,0	3,5	16,0	2,0
Other cars	pieces	10 045,0	14,9	15 583,0	22,8
Car components and accessories			2,5		9,0
Furniture and components; bedding			3,7		6,2
Clothes and accessories			17,5		20,1
Foot-wear			5,6		7,3
Special scientific and control devices			9,5		9,1
Medical tools and devices			4,7		5,7
Various finished products not included in other categories			9,7		11,7

¹ in c. i. f. prices, excluding imports by "shuttle traders" (adjustment)

I'03		I'04		unit of measur.	Products
in kind	mil. US\$	in kind	mil. US\$		
	293,6		421,7		Total
57,4	6,5	47,4	8,8	thou tons	Cereals and cereals products
21,4	6,8	29,7	10,2	thou tons	Sugar, sugar-ware and honey
3,8	3,9	4,9	5,4	thou tons	Coffee, tea, cocoa, spicery
	5,5		9,5		Beverages
	6,1		5,6		Tobacco and tobacco products
0,8	1,1	0,9	1,2	thou tons	Raw tobacco and tobacco waste
703,5	5,0	578,8	4,5	thou tons	Finished tobacco
	3,3		5,6		Mineral and raw fertilizers
380,1	9,3	255,0	4,9	thou tons	Coal, coke and briquets
215,0	46,1	325,3	89,6	thou tons	Oil and Oil products
1,1	0,1	4,3	0,6	thou tons	Petroleum oils
207,5	45,1	316,6	87,9	thou tons	Oil products
84,1	16,0	140,2	36,5	thou tons	Gasoline for motor vehicles
60,3	19,5	93,4	32,5	thou tons	Kerosene
29,8	5,9	59,6	14,6	thou tons	Diesel fuel
28,9	1,8	18,4	1,6	thou tons	Other Oil products
323,7	14,6	434,3	18,5	mil.m ³	Natural gas
96,2	0,4	6,4	0,0	mil.kwh	Electric energy
4,2	2,8	7,8	5,3	thou tons	Vegetable oils and fats
	1,3		0,8		Organic chemicals
0,0	0,0	0,1	0,1	thou tons	Other carbohydrates
28,0	3,8	56,9	13,4	thou tons	Nonorganic chemicals
0,8	8,5	1,0	15,5	thou tons	Medicaments
11,0	7,8	12,3	10,4	thou tons	Volatile oils and perfumery
21,6	2,0	17,0	2,1	thou tons	Fertilizers
4,3	4,6	7,0	7,9	thou tons	Primary form plastic
	2,9		4,5		Chemicals and chemical products
	6,5		7,4		Rubber goods
338,4	6,1	284,1	6,8	mil.pieces	Rubber tire casing
8,6	6,4	11,3	8,6	thou tons	Paper, cardboard and paper products
	7,8		12,7		Textile yarn and cloth
17,8	4,1	27,9	7,5	mil.sq.m	Wrought artificial and textile cloth
	4,4		5,7		Products from nonmetallic mineral resources
14,7	6,4	18,4	10,4	thou tons	Cast iron and steel
	7,4		8,8		Metal products
5,9	3,9	7,5	5,3	thou tons	Base metals produce
	0,5		0,8		Energy generating machinery and equipment
	18,9		15,3		Machinery designated for specific sectors
	3,7		5,2		Machinery and equipments for civil construction
	0,5		0,5		Machinery for textile and leather industry
	3,9		0,7		Machinery for food processing
	7,5		6,1		Working machines, equipment for specific sectors of industry
	4,1		6,3		Non-specific machinery and equipment
	3,2		5,1		Office appliances and equipment for data processing
16,1	2,1	45,0	3,4	thou pieces	Machinery for automatic processing
	4,1		11,4		Equipment for electric communication
	10,5		8,2		Electric machines and devices
	0,4		0,6		Electric devices for contact locking and breaking
0,8	2,3	1,2	2,5	thou tons	Electric distribution equipment
	14,6		27,7		Cars
387,0	2,0	553,0	3,1	pieces	Motor vehicles
71,0	0,9	11,0	2,8	pieces	Trucks
7 099,0	8,7	9 611,0	14,9	pieces	Other cars
	2,4		5,7		Car components and accessories
	2,5		2,6		Furniture and components; bedding
	7,4		5,2		Clothes and accessories
	2,4		2,4		Foot-wear
	5,8		4,3		Special scientific and control devices
	4,0		3,0		Medical tools and devices
	4,8		7,7		Various finished products not included in other categories

Table I.14.: Impact of Price and Quantity on the Volume of Export¹

Products	2004	2004	2003	Index of		
	mil US \$	mil US \$	mil US \$	prices	physic. vol	value
	n604 ² *p604 ³	n604*p603	n603*p603			
	A	B	C	A/B	B/C	A/C
Nonmonetary gold	150,0	130,9	99,9	1,15	1,31	1,50
Oil, oil products and similar materials	23,4	25,2	20,7	0,93	1,21	1,13
Cotton	15,6	12,7	15,3	1,23	0,83	1,02
Sugar, sugar-ware	13,6	13,4	2,7	1,02	5,06	5,14
Inorganic chemical agents	10,2	13,9	3,6	0,74	3,85	2,84
Metal ores and iron-and-shel waste	8,9	4,2	2,7	2,12	1,57	3,32
Electric filament lamps	7,8	5,0	6,5	1,57	0,76	1,20
Raw tobacco and tobacco waste	6,9	5,0	9,1	1,37	0,55	0,75
Vegetables and Fruits	6,6	9,6	5,1	0,68	1,87	1,28
Glass, casted and rolled	5,1	3,3	4,3	1,53	0,76	1,17
Asbestos-cement construction materials	4,7	4,1	3,3	1,15	1,24	1,42
Cement, portland cement	3,8	4,0	1,8	0,94	2,26	2,14
Aluminium	3,3	3,0	0,9	1,12	3,42	3,82
Milk, milky products and cream	3,0	2,4	2,8	1,26	0,83	1,05
Male trousers, overalls and breeches	2,9	3,0	2,1	0,96	1,39	1,33
Costumes	2,5	2,3	1,1	1,07	2,02	2,17
Blouses, jackets & jacket-blorses	2,1	1,9	1,1	1,12	1,78	1,99
Metal ores and base scrap	2,0	2,1	2,8	0,98	0,76	0,74
Wrought artificial cloth	1,8	1,3	1,7	1,36	0,80	1,09
Copper	1,7	1,1	0,5	1,59	2,05	3,25
Milk and milky products	1,6	1,3	0,2	1,23	6,75	8,32
Live animals	1,6	0,0	0,0	34,03	11,71	398,52
Coffee,tea,cocoa and spices	1,3	1,3	1,4	1,06	0,88	0,93
Cheese and cottage cheese	1,2	0,8	1,0	1,57	0,83	1,30
Stone, sand and gravel	1,2	2,9	0,2	0,42	12,03	5,09
Floor carpeting	1,1	1,2	0,8	0,98	1,43	1,40
Paper, cardboard and products from these materials	1,0	0,8	0,5	1,28	1,61	2,07
Silver	1,0	0,7	1,0	1,44	0,68	0,99
Female pants, overalls and breeches	0,9	0,9	0,4	1,06	2,10	2,23
Hand & machine tools	0,9	0,7	0,7	1,27	0,92	1,16
Textile yarn	0,8	0,8	0,6	1,04	1,32	1,37
Skirts and culottes	0,7	0,7	0,1	1,04	4,56	4,73
Oil seeds and oil fruits	0,7	0,6	0,0	1,16	13,46	15,60
Cast iron and steel	0,7	0,5	0,4	1,25	1,39	1,74
Construction brick	0,6	0,4	0,1	1,31	3,77	4,93
T-shirts, slips,bedroom shirts and similar products	0,5	1,4	0,1	0,38	12,02	4,58
Other mineral raw-materials	0,5	2,4	0,2	0,23	11,70	2,66
Textile bags and packets	0,5	0,5	0,4	1,07	1,22	1,30
Full range of goods (mil. US\$)	315,6	304,4	220,3	1,04	1,38	1,43
Full range of goods (in % of total export)	0,9		94,3%			
Total export	338,3		233,6			1,45

¹ based on NSC data on export at f. o. b. prices: first 40 large export items are indicated in the table for the first half of 2004² physical volume of export for the first half of 2004³ estimate export price for the first half of 2004

Table I.15: Impact of Price and Quantity on the Volume of Import¹

Products	2004	2004	2003	Index of		
	mil US \$	mil US \$	mil US \$	prices	physic. vol	value
	n604 ² *p604 ³	n604*p603	n603*p603			
	A	B	C	A / B	B / C	A / C
Oil, oil products	89,6	69,8	46,1	1,28	1,51	1,94
Natural gas	18,5	19,6	14,6	0,95	1,34	1,27
Medicaments, including veterinary	15,5	11,0	8,5	1,41	1,29	1,81
Inorganic chemical agents	13,4	7,8	3,8	1,73	2,03	3,52
Volatile oils	10,4	8,8	7,8	1,19	1,12	1,33
Cast iron and steel	10,4	7,9	6,4	1,30	1,25	1,63
Sugar, sugar-ware and honey	10,2	9,5	6,8	1,08	1,39	1,50
Paper, cardboard and paper products	8,6	8,3	6,4	1,03	1,31	1,35
Medical and pharmaceutical products	8,4	2,1	1,4	3,89	1,58	6,14
Radiotelephone and television devices	8,1	6,9	3,4	1,17	2,04	2,37
Primary form plastic	7,9	7,3	4,6	1,07	1,61	1,73
Alcoholic beverages	7,7	7,7	4,4	1,00	1,74	1,74
Wrought artificial cloth	7,5	6,4	4,1	1,17	1,57	1,83
Rubber tire casing	6,8	5,1	6,1	1,33	0,84	1,11
Vegetable oils and fats	5,3	5,2	2,8	1,04	1,86	1,93
Coffee, tea, cocoa, spicery	5,3	5,2	3,9	1,03	1,32	1,36
Base metals produce	5,3	5,0	3,9	1,07	1,27	1,36
Coal, coke and briquettes	4,9	6,2	9,3	0,78	0,67	0,53
Grain-crops (inc. amelecorn) and maangcorn	4,5	2,3	3,2	2,00	0,71	1,42
Tobacco-containing cigarettes	4,5	4,6	4,8	0,96	0,97	0,93
Primary form plastic	4,4	7,0	1,5	0,62	4,79	2,99
Meat and tinned meat products	3,8	11,0	2,3	0,35	4,79	1,66
Aluminium	3,7	6,0	1,6	0,61	3,81	2,33
Machines for automatic data processing	3,4	5,8	2,1	0,59	2,80	1,66
Dye and tanning materials	3,2	3,9	3,0	0,82	1,31	1,08
Motor and transport vehicles for people transportation	3,1	2,8	2,0	1,13	1,43	1,61
Machines for sorting and bolting	2,9	8,2	6,3	0,36	1,30	0,47
Meat and tinned meat products	2,9	2,9	1,7	0,99	1,71	1,69
Trucks and cars with special functions	2,8	1,4	0,9	2,03	1,55	3,14
Cars and mechanical equipment	2,7	0,4	0,3	6,14	1,76	10,82
Vegetables and Fruits	2,7	3,3	1,7	0,82	2,00	1,63
Electric distribution equipment	2,5	3,5	2,3	0,73	1,50	1,09
Foodstuffs and preparation	2,4	1,8	1,0	1,30	1,76	2,29
Meat and tinned meat products	2,4	2,0	1,6	1,17	1,26	1,48
Floor carpeting	2,3	3,2	1,7	0,71	1,91	1,36
Multiplex wood	2,3	1,6	1,2	1,39	1,31	1,81
Fertilizers	2,1	1,6	2,0	1,28	0,79	1,01
Copper	1,9	1,4	1,0	1,34	1,45	1,94
Meat and meat products	1,9	1,8	1,6	1,01	1,13	1,13
Machinery for rubber processing	1,8	1,1	0,1	1,68	11,00	18,46
Full range of goods (mil. US\$)	381,1	384,3	270,2	0,99	1,42	1,41
Full range of goods (in % of total e[port)	90,4%		92,0%			
Total import	421,7		293,6			1,44

¹ calculations on this table are based on the NSC data on imports of goods in c. i. f. prices² physical volume of imports for 2002³ accounted import price for 2002

Tables I.16 - I.26: Export of Basic Goods by Countries

Table I.16: Export of Goods to Russia

	unit of measurement	2000		2001		2002		2003		1 half 03		1 half 04	
		in kind	mil.US\$	in kind	mil.US\$	in kind	mil.US\$	in kind	mil.US\$	in kind	mil.US\$	in kind	mil.US\$
Total			65,1		64,5		80,0		97,0		40,2		57,3
<i>Functional distribution¹</i>													
Consumption			16,3		16,7		18,7		37,2		13,2		32,9
Raw materials			40,0		36,3		47,2		38,3		18,4		15,7
Interim goods			2,7		2,3		3,4		5,3		2,4		1,6
Investment goods			5,7		6,7		6,5		8,2		4,5		4,2
Energy products			0,4		2,5		4,3		8,1		1,6		3,0
<i>SITC sections and large positions</i>													
Food products and live animals			5,6		4,2		6,4		11,9		4,2		15,6
<i>Sugar-ware and honey</i>	thou tons	1,1	0,4	2,5	1,0	7,8	2,7	19,6	7,1	5,0	1,9	37,3	13,2
<i>Vegetables and Fruits</i>	thou tons	52,7	4,9	29,1	2,9	30,5	3,3	28,1	4,2	11,2	1,9	13,8	2,1
Drinks and tobacco			25,2		21,4		17,9		9,7		7,5		4,9
<i>Raw tobacco and tobacco waste</i>	thou tons	21,1	25,2	24,7	21,3	21,4	17,8	11,3	9,6	8,1	7,5	3,9	4,9
Non-food raw products, excluding fuel			14,1		14,3		28,8		28,0		10,7		10,7
<i>Cotton fiber</i>	thou tons	12,3	12,1	16,4	12,7	36,1	26,1	28,6	26,5	11,3	9,5	8,7	8,8
Mineral fuel, lubricants, and oils			0,4		2,5		4,3		8,1		1,6		3,0
<i>Electric energy</i>	mil. kwh	—	—	—	—	—	—	0,7	4,1	—	—	0,2	1,4
<i>Kerosene</i>	thou tons	1,1	0,4	7,4	2,5	12,6	4,3	12,6	4,0	5,1	1,6	4,9	1,6
Animal and vegetable oils, fats and wax			—		0,0		0,0		0,0		0,0		0,0
Chemical and similar products, not included in other categories			1,3		0,7		1,0		0,9		0,4		0,3
Industrial goods, classified by types of material			4,1		2,5		3,5		9,0		2,5		5,1
<i>Rolled glass</i>	mil. sq. m	—	—	—	—	—	—	1,4	3,9	—	—	1,2	3,8
<i>Glass, casted and rolled</i>	mil. sq. m	0,0	0,1	—	—	0,2	0,4	1,9	2,9	0,8	1,5	0,0	0,1
Machines and transportation equipment			12,6		16,5		13,0		17,0		7,8		7,1
<i>Filament lamps</i>	mln pieces	110,5	6,1	97,5	5,1	106,6	5,2	125,9	7,8	56,2	2,9	36,0	2,5
Various finished products			1,7		2,4		5,3		12,3		5,5		10,5
<i>Textile ready-made garments</i>	mln pieces	0,1	0,4	0,2	0,3	2,3	3,7	6,1	10,0			4,9	9,1
Goods and transactions, not included in other SITC categories			—		—		—		—		0,0		0,0

based on the NSC data on export at f. o .b. prices

¹ according to the classification worked out by the NBKR

Table I.17: Export of Goods to Kazakhstan

	unit of measurement	2000		2001		2002		2003		1 half 03		1 half 04		
		in kind	mil.US\$	in kind	mil.US\$	in kind	mil.US\$	in kind	mil.US\$	in kind	mil.US\$	in kind	mil.US\$	
Total			33,4		39,0		36,8		57,1		19,9		36,5	
<i>Functional distribution ¹</i>														
Consumption			10,4		13,8		16,4		22,8		9,5		14,9	
Raw materials			3,1		3,6		2,7		4,5		1,7		3,2	
Interim goods			4,9		4,9		6,6		18,9		6,0		11,9	
Investment goods			2,8		5,4		7,6		6,4		2,3		2,2	
Energy products			12,3		11,2		3,5		4,5		0,3		4,2	
<i>SITC sections and large positions</i>														
Food products and live animals					4,5		6,4		8,0		12,0		4,3	6,3
Milk and milky products, кроме масла и сыра	thou tons	4,0	0,8	4,9	1,6	7,0	3,1	19,9	9,0	3,2	0,9	2,4	0,9	
Sugar, sugar-ware and honey	thou tons	10,1	1,3	5,0	1,2	4,6	1,3	4,1	1,0	0,5	0,1	—	—	
Drinks and tobacco			1,9		1,5		0,3		0,7		0,4		1,2	
Non-food raw products, excluding fuel			0,3		1,2		0,4		0,9		0,5		0,8	
Mineral fuel, lubricants, and oils			12,3		11,2		3,5		4,5		0,3		4,2	
Electric energy	mil. kwh	1072,7	11,6	1048,6	10,4	424,4	3,4	489,1	4,4	0,0	0,3	0,1	0,7	
Animal and vegetable oils, fats and wax			0,0		0,0		0,0		0,0		0,0		0,0	
Chemical and similar products, not included in other categories			0,7		0,9		1,3		1,3		0,6		0,8	
Industrial goods, classified by types of material			5,1		7,2		11,8		23,2		7,7		14,2	
Floor carpeting	mil. sq. m	0,5	0,2	0,5	0,2	1,1	0,7	2,2	1,6	0,0	0,2	0,6	0,4	
Cement, portland cement	thou tons	87,4	1,9	60,1	1,4	65,2	1,5	241,5	5,7	21,5	0,5	59,9	1,4	
Slate	thou tons	28,5	1,2	39,3	1,7	41,8	1,9	50,4	2,6	9,6	0,5	9,8	0,6	
Glass, casted and rolled	mil. sq. m	0,0	0,0	0,0	0,0	0,8	1,5	4,0	7,2	0,4	0,8	0,6	1,7	
Machines and transportation equipment			5,3		6,7		5,9		8,1		3,4		3,6	
Working machines, equipment for specific sectors of	pieces	10,0	0,1	78,0	0,5	83,0	0,6	43,0	0,6	2,0	0,0	...	0,2	
Machinery and equipments for civil construction and подпряд.	pieces	31,0	0,1	44,0	0,2	49,0	0,4	241,0	0,5	1,0	0,2	3,0	0,1	
Machinery for food processing, their components	pieces	13,0	0,0	6,0	0,0	11,0	0,1	27,0	0,7	4,0	0,0	1,0	0,0	
Electric filament lamps and it's details	mln pieces	2,3	0,1	11,5	0,7	28,7	1,6	21,8	1,5	6,7	0,4	5,6	0,7	
Cars not included in other categories	pieces	114,0	0,9	309,0	2,3	357,0	1,0	410,0	1,1	95,0	0,3	85,0	0,2	
Various finished products			3,2		3,8		5,6		6,4		2,6		5,3	
Various finished products			2,6		2,5		4,1		5,3		0,0		4,2	
Goods and transactions, not included in other SITC categories			—		—		0,0		—		0,0		0,0	

based on the NSC data on export at f. o. b. prices

¹ according to the classification worked out by the NBKR

Table I.18: Export of Goods to Uzbekistan

	unit of measurement	2000		2001		2002		2003		1 half 03		1 half 04	
		in kind	mil.US\$	in kind	mil.US\$	in kind	mil.US\$	in kind	mil.US\$	in kind	mil.US\$	in kind	mil.US\$
Total			89,4		48,0		27,8		16,3		4,8		6,6
<i>Functional distribution¹</i>													
Consumption			3,4		2,4		3,2		3,2		1,4		1,6
Raw materials			1,3		0,8		1,1		0,5		0,1		1,8
Interim goods			5,6		6,8		4,1		1,9		0,7		2,3
Investment goods			14,5		3,0		1,6		1,8		0,8		0,8
Energy products			64,6		35,0		17,8		8,9		1,7		0,2
<i>SITC sections and large positions</i>													
Food products and live animals			1,0		0,2		1,1		0,4		0,2		0,1
Drinks and tobacco			0,4		0,1		0,1		0,0		0,0		0,0
Non-food raw products, excluding fuel			2,0		1,6		1,9		0,7		0,3		2,4
Mineral fuel, lubricants, and oils			64,6		35,0		17,8		8,9		1,7		0,2
<i>Electric energy</i>	<i>mil. kwh</i>		1925,6		64,3		1038,1		34,7		523,3		17,5
<i>Animal and vegetable oils, fats and wax</i>			—		—		—		—		—		—
Chemical and similar products, not included in other categories			0,3		1,1		0,8		0,2		0,0		0,2
Industrial goods, classified by types of material			2,3		2,2		2,3		1,4		0,5		0,9
<i>Lime, cement and construction materials</i>	<i>thou tons</i>		30,5		1,5		42,9		1,9		45,6		2,1
<i>Machines and transportation equipment</i>			16,1		7,1		3,2		4,4		1,9		2,8
<i>Electric filament lamps and their details</i>	<i>mln pieces</i>		0,3		0,0		12,4		0,9		22,7		1,6
<i>Cars not included in other categories</i>	<i>pieces</i>		117,0		0,6		26,0		0,1		14,0		0,2
Various finished products			2,8		0,7		0,5		0,2		0,1		0,0
Goods and transactions, not included in other SITC categories			—		—		—		—		—		—

based on the NSC data on export at f. o. b. prices

¹ according to the classification worked out by the NBKR based on the NSC data on export at f. o. b. prices

Table I.19: Export of Goods to Belarus

	unit of measurement	2000		2001		2002		2003		1 half 03		1 half 04	
		in kind	mil.US\$	in kind	mil.US\$	in kind	mil.US\$	in kind	mil.US\$	in kind	mil.US\$	in kind	mil.US\$
Total			3,0		3,2		1,3		1,5		1,0		0,8
<i>Functional distribution¹</i>													
Consumption			0,0		0,3		0,0		0,2		0,1		0,1
Raw materials			2,3		2,7		1,0		1,0		0,7		0,5
Interim goods			0,4		0,1		0,2		0,1		0,1		0,2
Investment goods			0,2		0,1		0,1		0,1		0,1		0,1
Energy products			—		—		0,0		0,1		0,0		0,0
<i>SITC sections and large positions</i>													
Food products and live animals			0,0		0,2		—		0,0		0,0		0,1
Drinks and tobacco			2,0		1,8		0,5		0,7		0,4		0,4
<i>Raw tobacco and tobacco waste</i>	<i>thou tons</i>		2,5		2,0		2,4		1,8		1,0		0,5
<i>Cotton</i>	<i>thou tons</i>		0,2		0,2		0,7		0,8		0,5		0,4
Non-food raw products, excluding fuel			0,4		0,9		0,5		0,3		0,3		0,1
Mineral fuel, lubricants, and oils			—		—		0,0		0,1		0,0		0,0
Animal and vegetable oils, fats and wax			—		—		—		—		0,0		0,0
Chemical and similar products, not included in other categories			0,0		0,0		0,0		0,0		0,0		0,0
Industrial goods, classified by types of material			0,0		0,2		—		—		0,0		0,0
Machines and transportation equipment			0,6		0,2		0,2		0,3		0,2		0,2
<i>Articulated-link chains and their details</i>	<i>thou tons</i>		0,2		0,4		0,1		0,1		0,1		0,2
Various finished products			0,0		—		0,0		0,1		0,1		0,0
Goods and transactions, not included in other SITC categories			—		—		—		—		0,0		0,0

based on the NSC data on export at f. o. b. prices

¹ according to the classification worked out by the NBKR

Table I.20: Export of Goods to Switzerland

	unit of measurement	2000		2001		2002		2003		1 half 03		1 half 04	
		in kind	mil.US\$	in kind	mil.US\$	in kind	mil.US\$	in kind	mil.US\$	in kind	mil.US\$	in kind	mil.US\$
Total			34,1		124,2		96,4		117,9		49,9		56,8
<i>Functional distribution</i> ¹													
Consumption			0,0		0,0		0,6		0,0		0,0		0,0
Raw materials			0,6		0,0		0,0		0,0		0,0		0,0
Interim goods			33,5		124,1		95,7		117,8		49,8		56,7
Investment goods			0,0		0,0		0,1		0,1		0,0		0,0
Energy products			—		—		0,0		—		0,0		0,0
<i>SITC sections and large positions</i>													
Food products and live animals			—		0,0		0,0		0,0		0,0		0,0
Drinks and tobacco			0,0		—		—		—		0,0		0,0
Non-food raw products, excluding fuel			0,6		0,0		0,3		0,0		0,0		0,0
Mineral fuel, lubricants, and oils			—		—		0,0		—		0,0		0,0
Animal and vegetable oils, fats and wax			—		—		—		—		0,0		0,0
Chemical and similar products, not included in other categories			—		—		—		—		0,0		0,0
Industrial goods, classified by types of material			0,2		0,5		0,7		0,8		0,4		0,4
<i>Silver</i>	<i>tons</i>		1,0		0,1		3,1		0,5		4,0		0,7
Machines and transportation equipment			0,0		0,0		0,0		0,0		0,0		0,0
Various finished products			0,0		—		0,4		0,1		0,0		0,0
Goods and transactions, not included in other SITC categories			33,3		123,6		95,0		116,9		49,4		56,3
<i>Nonmonetary gold</i>	<i>tons</i>		3,7		33,3		13,8		123,6		10,6		95,0
			9,7		116,9		4,3		49,4		4,2		56,3

based on the NSC data on export at f. o. b. prices

¹ according to the classification worked out by the NBKR

Table I.21: Export of Goods to China

	unit of measurement	2000		2001		2002		2003		1 half 03		1 half 04	
		in kind	mil.US\$	in kind	mil.US\$	in kind	mil.US\$	in kind	mil.US\$	in kind	mil.US\$	in kind	mil.US\$
Total			44,1		19,4		41,1		23,3		12,6		19,6
<i>Functional distribution¹</i>													
Consumption			0,7		2,3		4,0		5,6		3,9		2,6
Raw materials			32,9		15,3		34,2		16,4		8,1		16,3
Interim goods			9,6		1,0		1,3		0,9		0,5		0,3
Investment goods			0,9		0,6		0,9		0,3		0,1		0,2
Energy products			0,1		0,2		0,6		0,1		0,1		0,3
<i>SITC sections and large positions</i>													
Food products and live animals			0,2		0,1		0,3		0,3		0,2		0,1
Drinks and tobacco			—		0,0		0,0		0,0		0,0		0,0
Non-food raw products, excluding fuel			30,5		14,0		26,6		16,1		9,1		11,3
<i>Metal ores and scrap</i>	thou tons	77,1	25,6	110,3	6,8	205,1	8,8	261,4	8,1	125,4	4,4	186,0	8,0
<i>Cattle hides</i>	thou tons	6,1	2,6	15,0	4,6	16,0	14,8	9,1	5,2	5,9	3,6	6,3	2,3
<i>Other wool, including animal's hair</i>	thou tons	1,0	0,7	0,5	0,7	1,2	2,2	1,3	1,8	0,3	0,4	0,7	0,7
Mineral fuel, lubricants, and oils			0,1		0,2		0,6		0,1		0,1		0,3
Animal and vegetable oils, fats and wax			—		—		—		—		0,0		0,0
Chemical and similar products, not included in other categories			2,4		1,8		2,1		1,2		0,5		1,0
<i>Nonorganic chemicals</i>	thou tons	0,6	1,9	0,6	1,8	0,6	2,1	0,3	1,2	0,2	0,5	0,2	1,0
Industrial goods, classified by types of material			0,8		0,7		7,0		5,3		2,6		0,6
<i>Leather</i>	thou tons	14,4	0,1	0,1	0,0	7,6	4,0	1,0	2,6	0,1	1,4	4,5	1,4
<i>Aluminium</i>	thou tons	0,3	0,1	0,2	0,2	3,7	2,4	1,9	1,8	1,0	0,9	3,3	3,3
Machines and transportation equipment			1,1		2,6		4,5		0,3		0,1		0,1
Various finished products			0,1		0,1		0,0		0,0		0,0		0,3
Goods and transactions, not included in other SITC categories			8,9		—		—		—		—		—

based on the NSC data on export at f. o. b. prices

¹ according to the classification worked out by the NBKR

Table I.22: Export of Goods to USA

	unit of measurement	2000		2001		2002		2003		1 half 03		1 half 04	
		in kind	mil.US\$	in kind	mil.US\$	in kind	mil.US\$	in kind	mil.US\$	in kind	mil.US\$	in kind	mil.US\$
Total			2,8		7,1		36,1		6,5		5,3		1,3
<i>Functional distribution¹</i>													
Consumption			1,9		1,0		0,9		1,6		0,5		0,5
Raw materials			0,3		5,8		7,8		0,5		0,3		0,7
Interim goods			0,1		0,0		0,1		0,1		0,1		0,0
Investment goods			0,5		0,1		0,2		0,1		0,0		0,0
Energy products			0,0		0,2		27,0		4,3		4,3		0,1
<i>SITC sections and large positions</i>													
Food products and live animals			0,0		0,0		0,0		0,0		0,0		0,0
Drinks and tobacco			0,0		0,0		0,0		0,0		0,0		0,0
Non-food raw products, excluding fuel			0,8		0,1		0,7		0,3		0,2		0,1
Mineral fuel, lubricants, and oils			0,0		0,2		27,0		4,3		4,3		0,1
<i>Kerosene</i>	<i>thou tons</i>		0,0		0,0		0,6		0,2		72,6		27,0
Animal and vegetable oils, fats and wax			—		0,0		—		0,0		0,0		0,0
Chemical and similar products, not included in other categories			0,1		5,7		7,2		0,3		0,2		0,6
Industrial goods, classified by types of material			0,1		0,0		0,0		0,1		0,0		0,0
Machines and transportation equipment			0,1		0,1		0,3		0,0		0,0		0,0
Various finished products			1,8		1,0		0,8		1,5		0,5		0,4
<i>Textile ready-made garment</i>	<i>thou tons</i>		0,3		1,1		0,2		0,9		0,2		0,8
Goods and transactions, not included in other SITC categories			—		—		—		—		—		—

based on the NSC data on export at f. o .b. prices

¹ according to the classification worked out by the NBKR

Table I.23: Export of Goods to Turkey

Код	unit of measurement	2000		2001		2002		2003		1 half 03		1 half 04	
		in kind	mil.US\$	in kind	mil.US\$	in kind	mil.US\$	in kind	mil.US\$	in kind	mil.US\$	in kind	mil.US\$
Total			7,2		13,8		16,4		11,0		3,8		6,2
<i>Functional distribution¹</i>													
Consumption			3,0		4,9		6,5		5,9		2,4		2,8
Raw materials			2,1		2,3		5,1		2,0		0,8		1,1
Interim goods			0,2		0,0		0,3		0,2		0,1		0,1
Investment goods			1,7		5,9		3,8		0,0		0,0		0,0
Energy products			0,2		0,7		0,6		2,8		0,6		2,1
<i>SITC sections and large positions</i>													
Food products and live animals			1,2		4,3		5,0		4,9		1,9		2,6
<i>Bean</i>	<i>thou tons</i>	<i>1,9</i>	<i>0,8</i>	<i>8,7</i>	<i>3,7</i>	<i>3,3</i>	<i>1,2</i>	<i>6,1</i>	<i>1,6</i>	<i>1,8</i>	<i>0,7</i>	<i>3,5</i>	<i>0,7</i>
<i>Nuts</i>	<i>tons</i>	<i>1014,9</i>	<i>0,4</i>	<i>777,2</i>	<i>0,3</i>	<i>2895,2</i>	<i>2,3</i>	<i>1408,6</i>	<i>2,0</i>	<i>717,7</i>	<i>0,9</i>	<i>160,2</i>	<i>0,2</i>
Drinks and tobacco			—		0,0		0,0		0,0		0,0		0,0
Non-food raw products, excluding fuel			2,1		1,9		5,1		2,8		1,2		1,3
<i>Sheepskin and rough lamb hide</i>	<i>thou pieces</i>	<i>620,1</i>	<i>0,4</i>	<i>689,7</i>	<i>0,9</i>	<i>1132,1</i>	<i>1,5</i>	<i>826,7</i>	<i>1,1</i>	<i>166,9</i>	<i>0,2</i>	<i>193,2</i>	<i>0,3</i>
<i>Cattle hides</i>	<i>thou tons</i>	<i>0,9</i>	<i>0,3</i>	<i>0,4</i>	<i>0,2</i>	<i>1,6</i>	<i>1,1</i>	<i>0,9</i>	<i>0,6</i>	<i>0,0</i>	<i>0,0</i>	—	—
<i>Cotton fiber</i>	<i>thou tons</i>	<i>0,9</i>	<i>0,8</i>	<i>0,5</i>	<i>0,4</i>	<i>3,1</i>	<i>2,0</i>	<i>0,6</i>	<i>0,5</i>	<i>0,6</i>	<i>0,5</i>	—	—
Mineral fuel, lubricants, and oils			0,2		0,7		0,6		2,8		0,6		2,1
<i>Kerosene</i>	<i>thou tons</i>	<i>0,5</i>	<i>0,2</i>	<i>1,8</i>	<i>0,7</i>	<i>1,7</i>	<i>0,6</i>	<i>8,8</i>	<i>2,8</i>	<i>1,7</i>	<i>0,6</i>	<i>6,1</i>	<i>2,1</i>
Animal and vegetable oils, fats and wax			0,0		—		—		—		—		—
Chemical and similar products, not included in other categories			0,1		0,0		0,0		0,0		0,0		0,0
Industrial goods, classified by types of material			0,2		0,4		0,6		0,4		0,1		0,2
Machines and transportation equipment			3,3		6,4		5,1		0,1		0,0		0,0
Various finished products			0,0		0,0		0,0		0,0		0,0		0,0
Goods and transactions, not included in other SITC categories			0,0		—		—		—		—		—

based on the NSC data on export at f. o .b. prices

¹ according to the classification worked out by the NBKR

Table I.24: Export of Goods to Germany

	unit of measurement	2000		2001		2002		2003		1 half 03		1 half 04	
		in kind	mil.US\$	in kind	mil.US\$	in kind	mil.US\$	in kind	mil.US\$	in kind	mil.US\$	in kind	mil.US\$
Total			144,6		94,4		1,8		3,0		1,0		1,0
<i>Functional distribution¹</i>													
Consumption			0,8		0,7		0,9		1,2		0,4		0,2
Raw materials			2,4		1,0		0,7		1,5		0,5		0,5
Interim goods			141,2		92,5		0,0		0,2		0,1		0,0
Investment goods			0,2		0,2		0,2		0,0		0,0		0,0
Energy products			0,0		0,0		—		0,0		0,0		0,1
<i>SITC sections and large positions</i>													
Food products and live animals			0,2		0,3		0,4		0,7		0,2		0,2
<i>Vegetables and Fruits</i>	<i>thou tons</i>		0,1		0,3		0,1		0,6		0,2		0,5
Drinks and tobacco			0,2		0,1		0,4		0,3		0,3		0,2
<i>Raw tobacco and tobacco waste</i>	<i>thou tons</i>		0,2		0,1		0,3		0,3		0,2		0,3
Non-food raw products, excluding fuel			2,3		1,1		0,3		0,6		0,2		0,3
<i>Metal ores and scrap</i>	<i>thou tons</i>		0,4		0,3		0,2		0,6		0,2		0,5
Mineral fuel, lubricants, and oils			0,0		0,0		—		0,0		0,0		0,1
Animal and vegetable oils, fats and wax			0,1		—		0,2		0,1		0,1		0,0
Chemical and similar products, not included in other categories			0,1		0,7		0,1		0,8		0,0		0,0
<i>Nonorganic chemicals</i>	<i>tons</i>		0,9		0,0		0,1		30,3		0,7		—
Industrial goods, classified by types of material			0,9		0,5		0,1		0,2		0,1		0,0
Machines and transportation equipment			0,2		0,3		0,1		0,1		0,0		0,0
Various finished products			0,1		0,0		0,1		0,2		0,1		0,0
Goods and transactions, not included in other SITC categories			140,5		91,4		—		0,1		0,0		0,0

based on the NSC data on export at f. o. b. prices

¹ according to the classification worked out by the NBKR

Table I.25: Export of Goods to United Kingdom

	unit of measurement	2000		2001		2002		2003		1 half 03		1 half 04	
		in kind	mil.US\$	in kind	mil.US\$	in kind	mil.US\$	in kind	mil.US\$	in kind	mil.US\$	in kind	mil.US\$
Total			18,8		14,1		0,8		0,1		0,0		0,1
<i>Functional distribution¹</i>													
Consumption			0,0		0,0		0,0		0,0		0,0		0,0
Raw materials			5,9		4,2		0,8		—		0,0		0,0
Interim goods			12,7		9,8		0,0		0,0		0,0		0,0
Investment goods			0,0		—		—		0,0		0,0		0,0
Energy products			0,0		0,1		0,0		0,1		0,0		0,1
<i>SITC sections and large positions</i>													
Food products and live animals			—		0,0		0,0		—		0,0		0,0
Drinks and tobacco			—		0,0		—		0,0		0,0		0,0
Non-food raw products, excluding fuel			—		0,0		0,0		0,0		0,0		0,0
Mineral fuel, lubricants, and oils			0,0		0,1		0,0		0,1		0,0		0,1
<i>Kerosene</i>	<i>thou tons</i>		0,1		0,0		0,1		0,1		0,0		0,1
Animal and vegetable oils, fats and wax			—		—		—		—		0,0		0,0
Chemical and similar products, not included in other categories			5,3		3,4		0,3		—		0,0		0,0
Industrial goods, classified by types of material			0,7		1,0		0,5		0,0		0,0		0,0
Machines and transportation equipment			0,0		0,0		0,0		0,0		0,0		0,0
Various finished products			0,1		0,0		0,0		0,0		0,0		0,0
Goods and transactions, not included in other SITC categories			12,6		9,5		—		—		0,0		0,0

based on the NSC data on export at f. o. b. prices

¹ according to the classification worked out by the NBKR

Table I.26: Export of Goods to UAE

	unit of measurement	2000		2001		2002		2003		1 half 03		1 half 04	
		in kind	mil.US\$	in kind	mil.US\$	in kind	mil.US\$	in kind	mil.US\$	in kind	mil.US\$	in kind	mil.US\$
Total			1,4		0,5		68,8		144,3		51,3		94,5
<i>Functional distribution¹</i>													
Consumption			1,2		0,2		0,2		0,5		0,1		0,1
Raw materials			0,0		0,1		0,0		0,0		0,0		0,0
Interim goods			0,0		0,0		68,5		143,7		51,1		94,2
Investment goods			0,1		0,1		0,0		0,0		0,0		0,0
Energy products			—		0,1		0,1		0,1		0,0		0,2
<i>SITC sections and large positions</i>													
Food products and live animals			0,0		0,2		0,2		0,4		0,1		0,1
Drinks and tobacco			0,0		0,0		0,0		0,0		0,0		0,0
Non-food raw products, excluding fuel			0,0		0,1		0,0		—		0,0		0,0
Mineral fuel, lubricants, and oils			—		0,1		0,1		0,1		0,0		0,2
Animal and vegetable oils, fats and wax			—		—		—		—		0,0		0,0
Chemical and similar products, not included in other categories			0,1		0,0		—		0,0		0,0		0,0
Industrial goods, classified by types of material			1,0		0,1		0,8		1,1		0,6		0,6
Machines and transportation equipment			0,1		0,1		0,0		0,0		0,0		0,0
Various finished products			0,1		0,0		0,0		0,1		0,0		0,0
Goods and transactions, not included in other SITC categories			—		—		67,7		142,7		50,6		93,6
<i>Nonmonetary gold</i>	<i>tons</i>		—		—		6,8		67,7		12,4		142,7
			—		—		—		—		4,6		50,6
			—		—		—		—		7,4		93,6

based on the NSC data on export at f. o. b. prices

¹ according to the classification worked out by the NBKR

Tables I.27 - I.34: Import of Basic Goods by Countries

Table I.27: Import of Goods from Russia

	unit of measurement	2000		2001		2002		2003		1 half 03		1 half 04	
		in kind	mil.US\$	in kind	mil.US\$	in kind	mil.US\$	in kind	mil.US\$	in kind	mil.US\$	in kind	mil.US\$
Total			132,6		85,1		116,7		176,1		68,8		121,2
<i>Functional distribution¹</i>													
Consumption			43,9		29,3		35,9		55,7		22,2		30,4
Raw materials			8,7		6,8		9,4		13,8		5,9		11,6
Interim goods			41,8		31,8		34,1		48,4		19,1		26,1
Investment goods			21,0		8,5		14,2		20,2		7,4		9,6
Energy products			17,2		8,8		23,1		37,9		14,2		43,5
<i>SITC sections and large positions</i>													
Food products and live animals			10,5		7,0		11,3		13,3		4,8		7,3
<i>Chocolate</i>	thou tons		0,9		2,0		1,2		2,0		1,8		3,1
<i>Sugar, sugar-ware and honey</i>	thou tons		5,9		2,2		1,0		0,7		13,8		4,0
Drinks and tobacco			2,6		3,3		4,8		7,7		3,1		5,5
<i>Beer</i>	thou litres		3323,3		2,4		4363,2		2,4		5860,6		2,9
Non-food raw products, excluding fuel			4,6		3,2		4,8		7,0		3,3		5,0
<i>Softwood, split</i>	thou cub m		41,9		2,2		29,8		1,4		36,3		2,0
Mineral fuel, lubricants, and oils			17,2		8,8		23,1		37,9		14,2		43,5
<i>Gasoline for motor vehicles</i>	thou tons		34,2		9,9		6,9		1,4		46,3		6,9
<i>Diesel fuel</i>	thou tons		0,7		0,1		1,1		0,3		14,0		3,0
Animal and vegetable oils, fats and wax			1,2		0,4		0,3		0,5		0,4		0,3
Chemical and similar products, not included in other categories			21,2		16,0		21,4		31,6		12,7		17,8
<i>Medicaments</i>	thou tons		0,7		3,6		0,6		3,0		0,7		3,3
<i>Volatile oils, toilet articles and detergents</i>	thou tons		4,3		3,1		5,9		3,6		6,9		4,3
<i>Dye and tanning materials</i>	thou tons		2,6		3,5		2,7		2,5		3,8		3,5
Industrial goods, classified by types of material			33,9		27,8		30,3		45,6		18,1		25,0
<i>Rubber tire casing</i>	thou pieces		432,6		6,4		270,9		4,4		362,2		6,9
<i>Cast iron and steel</i>	thou tons		15,0		6,5		15,4		4,9		18,9		6,0
Machines and transportation equipment			33,8		15,1		16,9		25,5		9,5		13,7
<i>Motor vehicles and passenger transport means</i>	pieces		1993,0		6,0		699,0		2,9		621,0		2,3
<i>Cars not included in other categories</i>	pieces		1062,0		2,3		890,0		3,5		605,0		1,0
Various finished products			7,6		3,4		3,8		6,9		2,7		3,1
<i>Pre-engineered buildings, heating & lighting equipment</i>			0,4		0,2		0,4		1,0		0,2		0,4
<i>Candles, matches: smokers kits</i>	thou pieces		1,2		0,8		1,1		0,8		1,7		0,6
Goods and transactions, not included in other SITC categories			—		—		—		—		0,0		0,0

based on the NSC data on import at c.i.f. prices

¹ according to the classification worked out by the NBKR

Table I.28: Import of Goods from Kazakhstan

	unit of measurement	2000		2001		2002		2003		1 half 03		1 half 04	
		in kind	mil.US\$	in kind	mil.US\$	in kind	mil.US\$	in kind	mil.US\$	in kind	mil.US\$	in kind	mil.US\$
Total			57,4		81,8		123,8		170,9		65,9		97,1
<i>Functional distribution¹</i>													
Consumption			20,5		23,0		33,6		42,7		18,9		26,7
Raw materials			4,0		12,8		16,3		8,6		2,1		13,8
Interim goods			4,4		4,9		6,8		11,1		4,3		7,7
Investment goods			1,0		1,7		1,6		3,5		1,3		1,4
Energy products			27,5		39,3		65,5		105,0		39,3		47,5
<i>SITC sections and large positions</i>													
Food products and live animals			13,5		10,7		20,0		20,4		9,3		12,4
<i>Sugar, sugar-ware and honey</i>	thou tons	2,7	1,0	0,2	0,2	11,9	3,6	27,3	7,6	14,2	3,7	17,4	5,4
<i>Other wheat and non-ground mangcorn</i>	thou tons	119,0	9,4	74,3	6,7	155,9	11,4	92,4	7,5	45,4	3,2	24,8	3,6
Drinks and tobacco			5,6		8,1		8,5		11,6		5,8		6,2
<i>Tobacco-containing cigarettes</i>	mlrd pieces	0,5	5,3	0,6	6,2	0,4	5,3	0,6	6,8	0,3	3,8	0,3	3,0
Non-food raw products, excluding fuel			4,0		7,6		9,7		11,5		3,8		7,8
<i>Stone, sand and gravel</i>	thou tons	29,7	0,3	1199,3	1,6	610,0	2,2	1254,9	3,7	345,2	0,9	179,1	1,4
<i>Asbestos</i>	thou tons	9,0	1,0	13,2	1,2	14,1	1,8	21,1	3,5	10,1	1,6	11,3	2,4
Mineral fuel, lubricants, and oils			27,5		39,3		65,5		104,8		39,3		47,5
<i>Kerosene</i>	thou tons	3,9	1,1	26,2	8,0	92,3	30,0	147,4	46,2	47,9	15,3	67,9	23,6
<i>Gasoline for motor vehicles</i>	thou tons	34,6	7,3	64,1	13,9	73,0	12,0	105,7	23,8	43,2	7,9	38,6	10,7
<i>Non-sintered coal</i>	thou tons	719,4	10,5	338,7	6,2	882,5	13,6	1055,1	21,3	379,2	9,2	251,8	4,6
Animal and vegetable oils, fats and wax			0,2		1,7		1,3		3,6		1,4		3,3
<i>Vegetable oils and fats</i>	thou tons	0,3	0,2	2,4	1,6	1,5	1,3	4,4	3,6	1,7	1,3	3,9	3,1
Chemical and similar products, not included in other categories			2,0		8,0		9,4		3,8		0,9		9,2
<i>Nonorganic chemicals</i>	thou tons	21,8	1,1	37,7	6,7	38,0	7,9	28,1	1,6	13,1	0,2	15,2	6,8
<i>Soap, deteiseints, polishwear</i>	thou tons	0,7	0,3	1,8	0,7	1,5	0,6	2,9	1,2	0,9	0,4	1,5	0,7
Industrial goods, classified by types of material			3,3		3,8		6,0		9,6		3,5		8,8
<i>Cast iron and steel</i>	thou tons	7,7	2,1	8,8	2,2	8,7	2,5	12,3	5,2	4,7	1,8	5,4	2,7
<i>Paper, carboard and paper products</i>	thou tons	0,1	0,1	0,1	0,1	0,5	0,5	0,9	1,1	0,3	0,4	1,1	0,7
Machines and transportation equipment			0,8		2,0		2,7		4,8		1,7		1,3
<i>Equipment for electric communication</i>	pieces	5,0	0,1	52,0	0,2	232,0	0,4	12760,0	1,5	1220,0	0,3	6735,0	0,8
<i>Electric and nono-electric furnishings</i>	pieces	199,0	0,0	819,0	0,1	566,0	0,1	5508,0	0,8	2326,0	0,3	391,0	0,0
Various finished products			0,4		0,6		0,8		0,8		0,4		0,6
Goods and transactions, not included in other SITC categories			—		—		0,0		—		0,0		0,0

based on the NSC data on import at c.i.f. prices

¹ according to the classification worked out by the NBKR

Table I.29: Import of Goods from Uzbekistan

	unit of measurement	2000		2001		2002		2003		1 half 03		1 half 04	
		in kind	mil.US\$	in kind	mil.US\$	in kind	mil.US\$	in kind	mil.US\$	in kind	mil.US\$	in kind	mil.US\$
Total			75,1		66,7		60,1		39,2		18,4		25,5
<i>Functional distribution ¹</i>													
Consumption			4,3		1,6		1,5		1,1		0,5		1,6
Raw materials			0,2		0,8		0,3		0,3		0,2		0,1
Interim goods			3,0		2,0		2,9		4,6		2,1		3,1
Investment goods			6,5		1,1		1,2		0,6		0,3		1,1
Energy products			61,1		61,2		54,3		32,6		15,3		19,6
<i>SITC sections and large positions</i>													
Food products and live animals			1,9		0,2		0,1		0,3		0,1		1,1
Drinks and tobacco			2,2		0,9		0,3		0,3		0,2		0,2
Non-food raw products, excluding fuel			0,1		0,2		0,1		0,2		0,1		0,1
Mineral fuel, lubricants, and oils			61,1		61,2		54,2		32,6		15,3		19,6
<i>Natural gas</i>	<i>mil cub m</i>		651,9		33,2		665,7		33,2		855,7		41,8
Animal and vegetable oils, fats and wax			—		—		0,0		0,0		0,0		0,0
Chemical and similar products, not included in other categories			1,1		0,8		1,6		1,5		1,0		1,2
<i>Fertilizers</i>	<i>thou tons</i>		8,8		0,7		0,6		0,0		6,9		0,5
Industrial goods, classified by types of material			2,1		2,2		2,4		3,6		1,5		2,1
<i>Cement, portlandcement</i>	<i>thou tons</i>		50,4		1,0		40,9		0,8		55,3		1,1
Machines and transportation equipment			6,6		1,2		1,3		0,6		0,3		1,2
Various finished products			0,0		0,0		0,2		0,1		0,0		0,0
Goods and transactions, not included in other SITC categories			—		—		—		—		0,0		0,0

¹ according to the classification worked out by the NBKR and based on the NSC data on import at c.i.f. prices

Table I.30: Import of Goods from Belarus

	unit of measurement	2000		2001		2002		2003		1 half 03		1 half 04	
		in kind	mil.US\$	in kind	mil.US\$	in kind	mil.US\$	in kind	mil.US\$	in kind	mil.US\$	in kind	mil.US\$
Total			3,9		6,0		5,1		5,9		2,0		1,5
<i>Functional distribution¹</i>													
Consumption			1,6		1,5		1,4		2,0		1,0		0,7
Raw materials			0,2		0,3		0,2		0,2		0,1		0,1
Interim goods			0,3		0,2		0,4		0,5		0,2		0,2
Investment goods			1,8		3,8		3,1		3,2		0,6		0,6
Energy products			0,1		0,0		0,0		0,0		0,0		0,0
<i>SITC sections and large positions</i>													
Food products and live animals			0,1		0,2		0,1		0,2		0,2		0,0
Drinks and tobacco			—		—		—		—		0,0		0,0
Non-food raw products, excluding fuel			0,1		0,1		0,3		0,2		0,1		0,1
Mineral fuel, lubricants, and oils			0,1		0,0		0,0		0,0		0,0		0,0
Animal and vegetable oils, fats and wax			—		—		—		—		0,0		0,0
Chemical and similar products, not included in other categories			0,2		0,3		0,4		0,7		0,3		0,2
<i>Medicaments, including veterinary</i>	<i>thou tons</i>		0,0		0,2		0,0		0,3		0,0		0,2
Industrial goods, classified by types of material			0,7		1,0		0,9		1,1		0,6		0,3
<i>Rubber tire casing</i>	<i>thou pieces</i>		0,0		0,0		3,1		0,0		10,5		0,2
<i>Ñast iron, steel and alluminium constructions</i>	<i>thou pieces</i>		0,0		0,0		0,0		0,0		0,1		0,0
Machines and transportation equipment			2,3		4,2		3,0		3,2		0,5		0,6
<i>Tractors</i>	<i>pieces</i>		0,0		0,0		70,0		0,8		419,0		2,0
<i>Machinery and equipments for civil construction</i>	<i>pieces</i>		6,0		0,1		26,0		0,7		4,0		0,2
<i>Motor-cars</i>	<i>pieces</i>		63,0		1,4		132,0		1,9		17,0		0,3
Various finished products			0,3		0,2		0,4		0,5		0,3		0,2
Goods and transactions, not included in other SITC categories			—		—		—		—		0,0		0,0

¹ according to the classification worked out by the NBKR and based on the NSC data on import at c.i.f. prices

Table I.31: Import of Goods from China

	unit of measurement	2000		2001		2002		2003		1 half 03		1 half 04	
		in kind	mil.US\$	in kind	mil.US\$	in kind	mil.US\$	in kind	mil.US\$	in kind	mil.US\$	in kind	mil.US\$
Total			36,9		48,5		59,0		77,7		27,4		37,2
<i>Functional distribution¹</i>													
Consumption			20,3		20,9		30,1		44,3		14,2		18,5
Raw materials			1,9		3,2		3,5		3,1		1,8		1,7
Interim goods			10,5		15,7		14,9		16,1		4,8		7,5
Investment goods			4,1		8,8		10,4		13,9		6,5		9,4
Energy products			0,1		0,0		0,1		0,2		0,0		0,2
<i>SITC sections and large positions</i>													
Food products and live animals					1,1		1,5		1,9		4,3		1,5
<i>Rice</i>	thou tons	2,5	0,5	0,5	0,2	3,3	0,8	7,1	1,7	3,5	0,8	0,8	0,2
<i>Cake and other hard waste</i>	thou tons	0,0	0,0	0,0	0,0	0,1	0,1	2,3	1,2	0,3	0,1	0,7	0,1
Drinks and tobacco			1,5		1,3		1,0		1,2		0,7		0,5
<i>Tobacco and tobacco waste</i>	thou tons	1,1	1,5	0,8	1,3	0,7	1,0	0,7	1,1	0,4	0,6	0,4	0,4
Non-food raw products, excluding fuel			0,4		0,5		1,1		0,6		0,5		0,4
Mineral fuel, lubricants, and oils			0,1		0,0		0,1		0,2		0,0		0,2
Animal and vegetable oils, fats and wax			0,0		0,1		0,1		0,0		0,0		0,0
Chemical and similar products, not included in other categories			7,5		11,8		9,9		9,2		3,1		5,5
<i>Inorganic chemical agents</i>	thou tons	4,9	5,9	8,8	8,5	10,0	6,8	7,6	5,8	2,9	1,9	3,6	2,4
<i>Primary form plastic</i>	thou tons	0,5	0,3	1,9	1,1	0,5	0,4	2,0	1,1	0,1	0,1	2,9	1,9
Industrial goods, classified by types of material			11,1		11,7		14,4		20,1		6,3		10,5
<i>Artificial textile</i>	mil. sq. m	25,6	4,6	20,8	4,3	33,4	7,1	44,9	11,3	13,3	3,0	23,5	6,4
<i>Glazed ceramic tiles</i>	thou.sq. m	86,1	0,2	191,8	0,4	350,6	0,9	490,2	1,3	190,6	0,7	276,6	0,6
<i>Woofed cotton cloth</i>	thou.sq. m	1525,2	1,2	640,6	0,6	290,2	0,3	675,0	0,7	221,4	0,3	241,2	0,2
Machines and transportation equipment			4,2		7,3		11,1		15,8		6,5		10,8
<i>Other machinery for food processing</i>	pieces	111,0	0,3	36,0	0,1	62,0	0,1	80,0	2,5	64,0	2,4	21,0	0,3
<i>Machinery for automatic data processing</i>	thou pieces	2,8	0,2	6,0	0,2	2,1	0,4	16,7	1,3	1,7	0,3	15,7	0,7
<i>Equipment for electric communication</i>	thou pieces	13,8	0,8	7,6	3,0	18,5	2,9	29,2	8,3	10,7	2,3	13,1	6,5
Various finished products			10,9		14,3		19,5		26,2		8,7		8,0
<i>Clothes and accessories</i>			5,1		5,0		11,4		14,7		5,1		3,0
<i>Foot-wear</i>	thou pair	5162,4	2,8	4214,9	3,4	7560,0	4,6	8953,9	5,4	3151,9	1,6	2059,2	1,6
Goods and transactions, not included in other SITC categories			—		—		—		—		0,0		0,0

¹ according to the classification worked out by the NBKR and based on the NSC data on import at c.i.f. prices

Table I.32: Import of Goods from USA

	unit of measurement	2000		2001		2002		2003		1 half 03		1 half 04	
		in kind	mil.US\$	in kind	mil.US\$	in kind	mil.US\$	in kind	mil.US\$	in kind	mil.US\$	in kind	mil.US\$
Total			53,8		26,8		47,4		47,9		21,6		27,3
<i>Functional distribution¹</i>													
Consumption			47,2		20,5		33,8		33,3		10,7		21,3
Raw materials			0,0		0,1		0,1		0,3		0,3		0,0
Interim goods			1,3		2,9		1,5		3,1		1,1		0,5
Investment goods			5,3		3,2		12,1		11,2		9,6		5,5
Energy products			0,0		0,1		0,0		0,0		0,0		0,0
<i>SITC sections and large positions</i>													
Food products and live animals			22,8		0,7		5,0		3,9		0,7		2,2
<i>Meat and meat products</i>	thou tons	1,8	0,8	1,3	0,7	1,8	1,1	5,2	3,2	2,3	1,4	2,6	1,5
Drinks and tobacco			0,4		0,2		0,2		0,0		0,0		0,0
Non-food raw products, excluding fuel			2,4		1,4		3,5		3,1		0,0		1,6
<i>Old clothes</i>	thou tons	0,6	2,4	0,3	1,4	0,5	3,4	0,6	2,8	0,3	1,4	0,3	1,6
Mineral fuel, lubricants, and oils			0,0		0,1		0,0		0,0		0,0		0,0
Animal and vegetable oils, fats and wax			0,5		0,0		0,7		3,1		0,1		0,4
<i>Animal and vegetable oils, fats and its fraction</i>	thou tons	0,0	0,0	—	—	—	—	2,4	2,8	2,4	2,8	—	—
Chemical and similar products, not included in other categories			14,9		14,3		20,5		21,6		1,5		14,6
<i>Medicaments, including veterinary</i>	tons	42,0	13,9	36,9	14,1	38,5	16,9	58,9	20,3	10,6	2,6	28	7,0
Industrial goods, classified by types of material			1,7		1,5		0,8		0,6		4,0		0,9
Machines and transportation equipment			4,9		5,4		9,9		12,0		5,0		4,7
<i>Machinery and equipments for civil construction</i>	pieces	1,0	0,0	—	—	26,0	5,5	14,0	1,9	14,0	1,9	1,0	0,8
<i>Equipment for electric communication</i>	thou pieces	2,7	1,6	3,8	0,7	21,2	1,3	6,1	1,1	4,2	0,9	10,0	2,7
<i>Airplane</i>	pieces	—	—	—	—	—	—	1,0	6,0	1,0	6,0	—	—
Various finished products			6,2		3,0		6,8		3,6		2,1		2,8
<i>Clothes and accessories</i>			1,4		0,9		2,4		1,3		0,5		0,5
<i>Special, scientific, control instruments and devices</i>			2,1		1,1		3,3		1,4		0,8		1,0
Goods and transactions, not included in other SITC categories			—		—		—		—		0,0		0,0

¹ according to the classification worked out by the NBKR and based on the NSC data on import at c.i.f. prices

Table I.33: Import of Goods from Germany

	unit of measurement	2000		2001		2002		2003		1 half 03		1 half 04	
		in kind	mil.US\$	in kind	mil.US\$	in kind	mil.US\$	in kind	mil.US\$	in kind	mil.US\$	in kind	mil.US\$
Total			25,2		24,3		31,4		38,2		16,9		22,1
<i>Functional distribution¹</i>													
Consumption			12,8		14,6		6,8		8,5		3,4		3,8
Raw materials			0,3		0,3		0,9		1,0		0,5		0,4
Interim goods			3,9		3,5		3,6		4,4		1,9		1,5
Investment goods			7,8		5,4		18,3		22,8		10,6		15,6
Energy products			0,4		0,4		1,8		1,6		0,6		0,9
<i>SITC sections and large positions</i>													
Food products and live animals			0,3		1,0		0,6		0,5		0,1		0,2
Drinks and tobacco			2,6		1,9		0,7		1,0		0,5		0,4
Non-food raw products, excluding fuel			0,6		0,4		0,3		0,4		0,1		0,1
Mineral fuel, lubricants, and oils			0,4		0,4		1,8		1,6		0,6		0,9
<i>Petroleum oil and petroleum products (except raw)</i>	thou tons		0,5		0,4		5,2		1,8		3,9		1,6
Animal and vegetable oils, fats and wax			0,0		0,0		—		0,0		0,0		0,0
Chemical and similar products, not included in other categories			3,2		3,5		4,5		5,6		2,4		2,3
<i>Perfumery, cosmetic and toiletry</i>	thou tons		0,2		0,6		1,1		0,4		1,6		0,2
<i>Medicaments, including veterinarticles</i>	tons		30,9		0,6		23,1		0,5		52,0		0,9
Industrial goods, classified by types of material			3,6		3,5		2,8		4,1		1,5		1,7
<i>Paper&cardboard</i>	thou tons		0,2		0,4		0,2		0,4		0,9		0,1
<i>Rubber tire casing</i>	thou pieces		206,0		0,5		251,1		0,8		213,4		0,7
<i>Imperfect metal products</i>	thou tons		10,4		0,7		5,5		0,5		6,0		0,3
Machines and transportation equipment			12,4		11,5		17,2		21,5		9,0		15,2
<i>Cars, not included in other categories</i>	thou pieces		6,5		2,6		10,2		6,0		6,7		9,3
<i>Electrodiagnosis equipment for medical goals</i>	pieces		185,0		0,4		6,0		0,0		147,0		0,6
<i>Other machinery for food processing, and its details</i>	pieces		2,0		0,0		52,0		0,0		57,0		0,0
Various finished products			2,1		2,2		3,5		3,4		2,7		1,4
<i>Special, scientific, control instruments and devices</i>			0,6		0,8		2,3		2,3		2,1		0,8
Goods and transactions, not included in other SITC categories			—		—		—		—		0,0		0,0

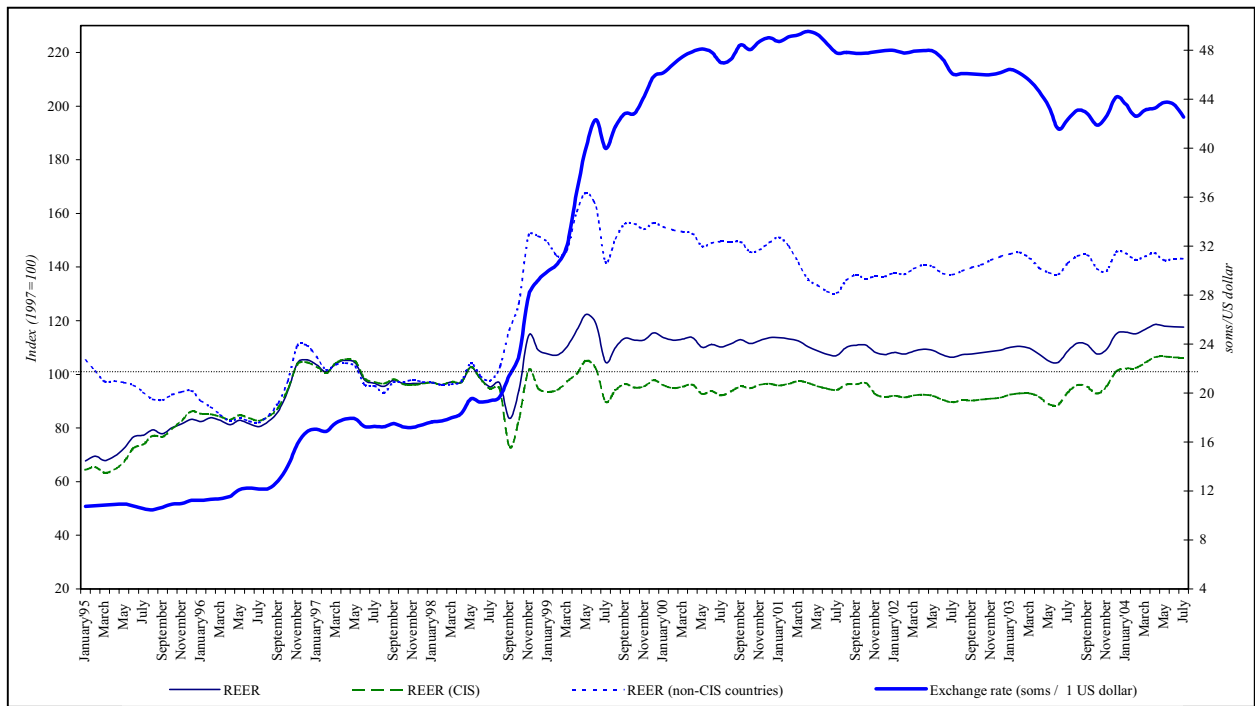
¹ according to the classification worked out by the NBKR and based on the NSC data on import at c.i.f. prices

Table I.34: Import of Goods from Turkey

	unit of measurement	2000		2001		2002		2003		1 half 03		1 half 04	
		in kind	mil.US\$	in kind	mil.US\$	in kind	mil.US\$	in kind	mil.US\$	in kind	mil.US\$	in kind	mil.US\$
Total			26,8		15,8		17,0		26,0		13,5		11,8
<i>Functional distribution ¹</i>													
Consumption			11,3		10,1		10,0		14,0		6,3		6,6
Raw materials			0,2		0,3		0,2		0,2		0,1		0,2
Interim goods			4,8		2,8		2,4		5,9		3,4		3,1
Investment goods			10,1		2,5		4,2		5,9		3,6		1,9
Energy products			0,4		0,1		0,2		0,1		0,0		0,0
<i>SITC sections and large positions</i>													
Food products and live animals			0,8		0,8		1,4		1,3		0,7		1,0
<i>Coffe, tea, cocoa, spices and products from its</i>	thou tons	0,6	0,3	0,4	0,3	0,5	0,3	0,6	0,4	0,3	0,2	0,6	0,4
<i>Sugar, sugar-ware and honey</i>	thou tons	0,5	0,1	0,3	0,3	0,6	0,5	0,3	0,3	0,1	0,2	0,2	0,2
<i>Cereals and cereals products</i>	thou tons	0,2	0,1	0,3	0,2	0,6	0,2	0,9	0,3	0,4	0,1	0,7	0,2
Drinks and tobacco			0,0		0,0		0,0		0,0		0,0		0,0
Non-food raw products, excluding fuel			0,1		0,1		0,1		0,1		0,0		0,0
Mineral fuel, lubricants, and oils			0,4		0,4		0,2		0,1		0,0		0,0
Animal and vegetable oils, fats and wax			0,1		0,1		0,1		0,2		0,1		0,1
Chemical and similar products, not included in other categories			2,1		2,1		2,3		3,7		1,5		2,1
<i>Soap, detergents and polishwear</i>	thou tons	1,5	0,7	1,6	0,7	1,5	0,8	2,3	1,1	0,6	0,4	0,8	0,3
<i>Primary form plastic</i>	thou tons	0,2	0,5	0,2	0,2	0,4	0,4	1,0	0,9	0,1	0,4	0,0	0,1
<i>Chemical materials and products, not included in other categories</i>	thou tons	0,1	0,1	0,1	0,7	0,1	0,6	0,1	0,8	0,1	0,4	0,0	0,1
Industrial goods, classified by types of material			6,5		6,5		4,1		7,6		4,0		3,7
<i>Metal product, not included in other categories</i>	thou tons	1,8	1,3	4,6	0,6	1,9	0,8	3,5	1,9	1,5	1,3	0,5	0,4
<i>Floor carpeting</i>	mil. sq. m	0,5	0,4	0,4	0,4	0,9	0,8	2,5	1,8	1,0	0,9	2,1	1,2
<i>Paper, cardboard and paper products</i>	thou tons	0,6	1,2	0,8	1,1	0,8	0,7	1,0	1,0	0,6	0,5	0,8	0,7
Machines and transportation equipment			9,7		9,7		4,6		7,7		5,0		2,4
<i>Machinery designated for specific sectors</i>			5,6		0,8		0,9		1,2		0,8		0,6
<i>Electric machines, devices, sets and its details</i>			0,8		0,6		1,3		4,2		3,4		0,4
Various finished products			7,0		7,0		4,1		5,2		2,1		2,5
<i>Furniture and its detail, постель-е принадлежности</i>			1,5		0,6		0,8		1,3		0,4		0,4
<i>Clothes and accessories</i>			2,0		2,3		1,9		2,1		0,9		0,9
<i>Plastic products not included in other categories</i>			0,8		0,6		0,7		0,9		0,3		0,4
Goods and transactions, not included in other SITC categories			—		—		—		—		0,0		0,0

¹ according to the classification worked out by the NBKR and based on the NSC data on import at c.i.f. prices

Chart I.1. Exchange Rate and the Real Effective Exchange Rate Index
 (total, with CIS and non CIS countries)



**Table I.35: Real and Nominal Effective Exchange Rate Indices:
total, by CIS countries and non-CIS countries¹**

(basic period - 1997)

	<i>REER</i>	<i>NEER</i>	<i>REER (CIS)</i>	<i>NEER (CIS)</i>	<i>REER (non-CIS countries)</i>	<i>NEER (non-CIS countries)</i>	<i>Exchange rate (soms / 1 US dollar)</i>
January'95	67,8	105,2	64,4	117,1	105,1	65,3	10,7389
February	69,5	100,7	65,4	110,8	101,1	67,1	10,8000
March	67,9	96,1	63,3	104,1	97,4	69,2	10,8525
April	69,5	93,0	64,5	99,6	97,5	70,8	10,9022
May	72,4	92,0	67,4	98,3	96,9	71,0	10,9400
June	76,7	93,1	72,4	99,9	95,9	70,8	10,7867
July	77,3	92,0	73,9	99,1	93,3	69,1	10,5578
August	79,2	93,1	77,1	101,3	90,7	68,0	10,4700
September	77,9	89,9	76,8	96,4	90,5	69,3	10,6775
October	80,2	89,7	79,6	95,3	92,4	71,5	10,9288
November	81,6	85,9	82,8	90,0	93,5	71,6	10,9744
December	83,3	84,3	86,2	87,5	93,9	72,4	11,2338
January'96	82,5	82,0	85,3	84,5	90,1	71,9	11,2378
February	83,8	81,9	85,2	84,4	87,8	72,4	11,3156
March	82,8	81,3	84,3	83,7	85,0	72,6	11,3688
April	81,3	81,4	83,1	83,6	82,6	73,3	11,5600
May	82,9	84,2	84,8	86,2	83,7	76,9	12,1188
June	81,6	83,7	83,7	85,4	82,5	77,3	12,2244
July	80,5	82,6	82,7	84,1	81,9	77,0	12,1563
August	82,6	82,3	84,3	83,6	84,8	77,6	12,2010
September	86,2	85,1	87,5	86,1	89,3	81,2	12,8350
October	93,9	92,0	94,5	93,0	97,6	88,3	14,0289
November	104,3	100,9	103,7	100,8	110,7	100,1	15,8356
December	105,4	105,0	104,4	104,5	110,7	105,3	16,8325
January'97	103,6	104,3	102,8	103,9	106,5	104,6	17,0413
February	100,9	101,2	100,6	100,8	101,8	101,3	16,8782
March	104,0	104,4	104,2	104,3	103,6	104,1	17,5634
April	105,2	105,3	105,7	105,3	104,2	105,0	17,8663
May	104,2	104,5	104,8	104,6	102,8	104,5	17,8857
June	97,8	100,2	98,5	100,4	96,1	99,9	17,2616
July	96,7	99,5	97,2	99,4	95,7	99,6	17,2762
August	95,5	96,9	96,5	97,4	93,2	95,5	17,2475
September	97,9	97,3	98,2	97,5	97,1	96,8	17,5046
October	96,5	95,2	96,4	95,3	97,0	95,1	17,2190
November	96,6	94,4	96,1	94,5	98,0	94,5	17,1888
December	96,7	94,5	96,5	95,1	97,2	93,4	17,4173
January'98	97,0	94,3	96,9	95,1	96,9	92,7	17,6435
February	96,1	93,6	96,0	94,4	96,0	92,2	17,7248
March	97,1	94,1	97,3	95,0	96,3	92,2	17,9777
April	97,0	94,0	97,1	94,5	97,4	93,3	18,3281
May	102,8	99,4	102,7	99,6	104,1	99,2	19,5238
June	98,5	97,3	98,4	97,7	99,6	96,6	19,2572
July	95,3	96,7	94,7	96,8	97,7	96,5	19,3845
August	96,7	94,9	94,7	93,9	102,6	97,8	19,6859
September	83,6	79,8	73,1	70,3	116,6	108,7	21,4430
October	94,0	80,5	83,1	68,7	126,7	117,8	23,0444
November	114,5	96,2	101,6	82,3	152,0	140,4	27,9862
December	109,1	93,7	94,7	78,0	151,5	146,3	29,2252
January'99	107,7	90,9	93,6	74,8	148,9	147,7	29,9584
February	107,2	89,6	94,2	73,5	144,0	146,9	30,5733
March	110,4	91,6	97,3	74,9	146,4	151,6	32,0831
April	116,5	97,8	100,2	77,8	160,7	170,6	36,4737
May	122,4	105,5	105,2	83,1	167,7	185,6	40,1410
June	118,8	108,9	101,9	85,0	162,2	192,8	42,3231
July'99	104,5	101,9	89,8	78,9	141,9	180,9	39,9855
August	110,1	105,7	94,0	80,6	150,6	191,4	41,7756

Table I.35: (continued)

	<i>REER</i>	<i>NEER</i>	<i>REER (CIS)</i>	<i>NEER (CIS)</i>	<i>REER (non-CIS countries)</i>	<i>NEER (non-CIS countries)</i>	<i>Exchange rate (soms / 1 US dollar)</i>
September'99	113,5	106,2	96,4	80,1	156,1	195,5	42,8174
October	112,7	105,8	95,1	78,5	156,1	197,2	42,8478
November	112,9	107,8	95,5	79,7	154,1	198,6	44,2404
December	115,5	110,5	97,8	80,8	156,5	203,3	45,8661
January'00	113,7	109,0	95,9	78,2	155,0	204,4	46,1658
February	112,8	108,6	94,9	77,6	153,8	203,9	46,8496
March	113,2	110,1	95,4	78,8	153,1	204,4	47,4691
April	113,8	110,6	96,1	79,3	152,4	203,8	47,8870
May	110,1	107,4	92,8	76,5	147,8	200,7	48,1138
June	111,2	108,3	93,8	76,9	149,0	204,6	47,8440
July	110,2	104,9	92,1	73,6	149,6	202,7	46,9929
August	111,4	104,4	93,7	73,6	149,3	200,2	47,2735
September	112,9	105,8	95,5	74,7	149,4	201,1	48,4232
October	111,5	104,4	94,8	73,8	145,6	197,9	48,0577
November	112,6	104,9	96,0	74,6	146,4	200,8	48,7261
December	113,7	105,3	96,5	74,4	149,2	206,0	49,0239
January'01	113,7	104,6	95,8	73,0	151,1	209,4	48,7077
February	113,3	104,3	96,5	73,2	147,7	206,1	49,0873
March	112,5	103,1	97,5	72,9	141,6	197,0	49,2613
April	110,4	101,6	96,8	72,2	135,5	189,5	49,5489
May	108,8	101,3	95,6	71,8	133,2	188,8	49,2861
June	107,5	98,6	94,7	70,3	130,9	183,5	48,5289
July	107,1	96,3	94,2	68,9	130,3	179,0	47,7796
August	110,1	96,3	96,2	68,6	135,1	180,3	47,8356
September	110,8	96,0	96,3	68,2	137,1	181,2	47,7412
October	111,0	95,4	96,8	68,1	135,7	178,2	47,7665
November	108,2	92,2	92,6	64,5	136,6	179,3	47,8836
December	107,4	91,9	91,7	63,8	136,5	181,4	47,9665
January'02	108,2	91,9	92,1	63,2	137,9	183,0	47,9893
February	107,6	91,2	91,4	62,7	137,3	180,7	47,7802
March	108,7	91,9	92,1	62,4	139,4	181,4	47,9195
April	109,4	92,3	92,4	62,5	140,9	182,1	47,9610
May	108,9	92,4	92,0	62,5	140,1	182,2	47,9319
June	107,3	91,2	90,5	61,7	137,7	179,4	47,2569
July	106,4	89,0	89,6	60,2	137,1	175,9	46,0705
August	107,3	89,1	90,3	60,3	138,5	175,2	46,0881
September	107,7	89,2	90,2	60,1	139,9	175,8	46,0788
October	108,0	88,5	90,6	59,9	140,8	174,9	46,0127
November	108,6	87,9	90,9	59,6	142,6	176,7	45,9974
December	109,1	87,9	91,3	59,8	144,0	179,6	46,1778
January'03	110,0	88,2	92,3	60,1	144,9	181,8	46,4192
February	110,2	88,0	92,7	60,0	145,5	182,7	46,1189
March	109,4	87,2	92,6	59,7	143,3	178,9	45,5146
April	107,3	85,8	91,3	58,7	139,7	175,6	44,6220
May	104,6	84,6	88,6	57,4	137,9	174,7	43,3566
June	104,3	82,7	88,4	55,7	137,2	170,0	41,5617
July	108,7	84,3	93,0	57,3	141,4	171,2	42,3787
August	111,4	86,3	95,8	58,7	144,1	173,3	43,0904
September	110,8	85,6	95,1	58,5	144,5	172,3	42,8435
October	107,6	85,0	92,7	58,0	139,5	170,4	41,8848
November	109,3	87,9	95,4	59,6	138,6	171,2	42,6258
December	115,2	93,3	100,9	63,2	145,5	180,7	44,1821
January'04	115,2	93,0	101,1	63,4	145,5	180,3	44,1821
February	115,8	93,5	102,3	63,9	145,4	181,4	43,5786
March	115,2	92,3	102,4	64,1	143,2	178,6	42,6141
April	118,6	93,4	106,3	66,7	145,2	181,8	43,2785
May	118,1	93,7	106,7	67,8	142,5	180,2	43,7551
June	117,8	93,4	106,3	67,4	143,2	178,6	43,5600
July	117,7	92,1	106,3	66,3	143,0	177,2	42,5461

Table I.36: Geographic structure of net inflows of foreign direct investments in Kyrgyz Republic
(in millions of US dollars)

	2000	2001	2002	2003	1half' 03	1half' '04
TOTAL	-2,4	5,0	4,7	45,5	5,9	31,5
Non-CIS countries	-3,7	6,7	-11,4	40,8	3,3	25,6
Great Britain	-3,8	-1,5	-1,7	-2,0	-0,8	2,6
German	8,2	18,4	-3,5	-5,7	-1,0	0,6
India	-0,8	0,6	0,3	0,1	0,1	0,1
Iran	-0,5	0,1	-0,1	0,0	0,1	0,1
Ireland	0,9	-0,1	-0,2	-0,1	0,0	-0,1
Italy	-7,5	0,0	-6,2	-0,1	0,2	-0,6
Canada	-5,9	-10,1	-9,6	19,4	4,3	29,0
Cyprus	0,4	0,0	0,1	0,8	-0,2	0,4
China	-2,2	2,1	2,8	10,2	2,9	1,5
Korea	-0,1	-1,1	1,2	5,4	1,6	-4,6
Malaysia	3,0	0,1	—	—	—	0,0
Nitherland	9,2	1,3	-0,9	1,7	-0,6	-2,0
USA	1,5	-3,4	3,9	-7,2	-7,0	1,9
Turkey	-3,3	0,4	4,1	17,6	4,1	-3,2
Switzerland	-0,7	-4,1	0,0	-0,9	0,1	-0,9
Japan	-0,1	—	—	-0,3	—	-0,3
CIS Countries	1,3	-1,7	16,3	4,7	2,4	5,9
Kazakhstan	-0,1	-0,2	3,4	0,2	0,4	2,0
Russia	1,0	0,5	11,8	3,4	1,4	4,1

Table I.37: International reserves (end of period)

	1999	2000	2001	2002	2003	I half' '04
Reserves (mil. US dollars)	248,8	261,1	285,2	316,7	389,0	388,0
Liquid part of reserves (mil. US dollars)	183,2	204,0	234,6	289,7	359,2	362,6
Reserves in months of import of goods and facility (exclud. TA ¹)	4,3	4,9	6,3	5,6	5,8	4,6
Liquid part of reserves in months of import of goods and facility (exclud. TA ¹)	3,1	3,7	5,0	5,0	5,3	4,3

¹ technical assistance

Table I.38: External Debt of the Kyrgyz Republic

	2000	2001	2002	2003	I half '04
ED ¹ end-period (<i>mil. US dollars</i>)	1 703,8	1 677,7	1 784,6	1 965,7	1 982,3
ED end-period (<i>per cent of GDP</i>)	124,6	109,6	110,6	102,3	95,0 ²
ED end-period (<i>per cent of exports</i> ³)	297,5	299,3	278,8	263,8	235,9
Schedule of ED payments ⁴ (<i>mil. US dollars</i>)	160,8	170,2	132,1 ⁶	162,6 ⁶	75,0 ⁶
Actual ED repayment ⁴ (<i>mil. US dollars</i>)	154,7	171,1	115,8 ⁷	132,8 ⁷	71,6 ⁷
ED service ratio (<i>per cent of exports</i>)					
- as scheduled	28,1	30,4	20,6 ⁶	21,8 ⁶	17,7 ⁶
- actual	27,0	30,5	18,1 ⁷	17,8 ⁷	16,9 ⁷
PED ⁴ end-period (<i>mil. US dollars</i>)	1 399,2	1 441,5	1 584,8	1 773,6	1 808,3
PED end-period (<i>per cent of GDP</i>)	102,3	94,2	98,2	92,3	86,7 ²
PED end-period (<i>per cent of exports</i> ³)	244,3	257,2	247,6	238,0	215,2
Schedule of PED ⁴ (<i>mil. US dollars</i>)	77,6	71,7	86,7 ⁶	96,9	51,3 ⁶
Actual PED repayment ⁴ (<i>mil. US dollars</i>)	48,1	71,7	69,0 ⁷	54,0 ⁷	27,6 ⁷
PED service ratio (<i>per cent of exports</i>)					
- as scheduled	13,5	12,8	13,5 ⁶	13,0 ⁶	12,1 ⁶
- actual	8,4	12,8	10,8 ⁷	7,2 ⁷	6,5 ⁷

¹ total external debt (including private and IMF loans)

² as against the projected annual GDP

³ includes export of goods and services

⁴ includes payments on interest and principal

⁵ public external debt (including debt on IMF loans)

⁶ primary chart of payments of agreement, before the Paris Club of Loaners talks

⁷ on the base of real payments in connexion with the reformation in the network with the Paris Club of Loaners

Table I.39: Structure of the External Debt of the Kyrgyz Republic
(end of period)

	2000		2001		2002		2003		I half '04	
	mil. US\$	in percent of the total	mil. US\$	in percent of the total	mil. US\$	in percent of the total	mil. US\$	in percent of the total	mil. US\$	in percent of the total
Total external debt (I+II)	1 703,8	100,0	1 677,7	100,0	1 784,6	100,0	1 965,7	100,0	1 978,2	100,0
I. Public & Government-guaranteed debt	1 399,2	82,1	1 441,5	85,9	1 584,8	88,8	1 773,6	90,2	1 804,1	91,2
Multilateral ¹	893,9	52,5	941,3	56,1	1 068,3	59,9	1 211,7	61,6	1 215,0	61,4
IMF	191,6	11,2	179,3	10,7	185,2	10,4	201,9	10,3	198,7	10,0
World Bank	374,8	22,0	388,4	23,1	457,0	25,6	525,1	26,7	529,6	26,8
EBRD	65,1	3,8	56,5	3,4	48,6	2,7	39,7	2,0	36,3	1,8
ADB	240,9	14,1	291,9	17,4	341,2	19,1	399,9	20,3	405,4	20,5
Islamic Bank	10,3	0,6	12,3	0,7	18,6	1,0	24,3	1,2	23,9	1,2
IFAD	4,0	0,2	4,5	0,3	5,7	0,3	7,0	0,4	8,1	0,4
OPEC	2,3	0,1	3,5	0,2	6,7	0,4	7,3	0,4	6,8	0,3
Nordic Development Fund	4,9	0,3	4,7	0,3	5,3	0,3	6,4	0,3	6,1	0,3
Bilateral	465,2	27,3	466,8	27,8	506,5	28,4	552,2	28,1	579,2	29,3
CIS countries	178,6	10,5	178,1	10,6	182,4	10,2	182,4	9,3	190,7	9,6
Russia ²	166,2	9,8	166,7	9,9	171,1	9,6	168,6	8,6	179,1	9,1
Uzbekistan	12,4	0,7	11,3	0,7	11,3	0,6	13,8	0,7	11,6	0,6
Other countries (except for CIS)	286,6	16,8	288,7	17,2	324,0	18,2	369,8	18,8	388,5	19,6
Turkey	41,0	2,4	43,6	2,6	44,5	2,5	45,8	2,3	46,3	2,3
Japan ²	183,5	10,8	176,6	10,5	197,0	11,0	229,8	11,7	245,1	12,4
Germany ²	20,4	1,2	20,0	1,2	26,5	1,5	37,1	1,9	38,2	1,9
Pakistan	8,9	0,5	8,4	0,5	8,4	0,5	8,4	0,4	4,9	0,2
China	1,2	0,1	6,0	0,4	10,3	0,6	8,0	0,4	11,3	0,6
France ²	3,5	0,2	3,5	0,2	4,1	0,2	5,0	0,3	4,9	0,2
Kuwait Fund	7,7	0,4	9,8	0,6	13,0	0,7	15,5	0,8	15,5	0,8
India	1,2	0,1	0,9	0,1	0,9	0,1	1,0	0,0	2,0	0,1
Korea	12,7	0,7	12,2	0,7	13,5	0,8	14,1	0,7	14,5	0,7
Denmark ²	6,5	0,4	7,7	0,5	5,8	0,3	5,0	0,3	5,9	0,3
Government-guaranteed debt	40,1	2,4	33,3	2,0	10,1	0,6	9,7	0,5	10,0	0,5
II. Private non-guaranteed debt	304,6	17,9	236,3	14,1	199,7	11,2	192,1	9,8	174,0	8,8

¹ creditors acting on a multilateral basis including international financial institutions

² creditors to whom the Kyrgyz Republic does not have any liabilities to their credits

Table I.40: Balance of International Investment Position of the Kyrgyz Republic as of January 1, 2003 and July 1, 2004*(mil. US dollars)*

	<i>Position as of 01.01.04</i>	<i>Transactions</i>	<i>Price changes</i>	<i>Exchange rate changes</i>	<i>Other adjustments</i>	<i>Position as of 01.07.04</i>
<i>A</i>	<i>1</i>	<i>2</i>	<i>3</i>	<i>4</i>	<i>5</i>	<i>6</i>
A. Assets	711,6	-32,6	-2,0	-90,4	6,6	593,2
Direct investment abroad	39,3	-86,7	0,0	0,0	0,0	-47,4
Portfolio investments	7,6	-8,0	0,0	0,0	0,5	0,1
Financial derivatives	0,0	0,0	0,0	0,0	0,0	0,0
Other investments	305,5	54,0	-1,1	-86,5	6,1	278,0
Currency and deposits	151,3	76,0	0,0	-65,9	0,0	161,4
Loans	6,7	-0,3	0,0	5,3	0,0	11,7
Monetary authorities	0,0	0,0	0,0	0,0	0,0	0,0
General government	1,2	-0,1	0,0	0,0	0,0	1,1
Banks	5,5	-0,2	0,0	5,3	0,0	10,6
Other sectors	0,0	0,0	0,0	0,0	0,0	0,0
Trade credits	117,8	-16,8	0,0	-25,9	0,0	75,0
Other assets	29,8	-5,0	-1,1	0,0	6,1	29,8
Reserve assets	359,2	8,2	-0,8	-3,9	0,0	362,6
Monetary gold	9,6	4,2	-0,8	0,0	0,0	13,0
SDR	10,2	-0,7	0,0	-0,2	0,0	9,3
Reserve position in IMF	0,0	0,0	0,0	0,0	0,0	0,0
Foreign exchange	339,3	4,7	0,0	-3,7	0,0	340,3
Currency and deposits	192,4	-58,4	0,0	-2,8	0,0	131,2
Monetary authorities	86,0	-31,7	0,0	-2,7	0,0	51,6
Banks	106,4	-26,7	0,0	-0,2	0,0	79,6
Foreign securities	146,9	63,1	0,0	-0,9	0,0	209,0
Stocks and other debt securities	0,0	0,0	0,0	0,0	0,0	0,0
Money market instruments	146,9	63,1	0,0	-0,9	0,0	209,0
B. Liabilities	2 575,0	-38,3	-4,1	17,9	-60,3	2 490,1
Direct investment in KR	491,5	31,5	0,0	-9,9	-9,9	503,1
Portfolio investments	5,7	0,0	0,0	-5,7	0,0	0,0
Financial derivativ	24,6	-20,5	-4,1	0,0	0,0	0,0
Other investments	2 053,3	-49,4	0,0	33,5	-50,4	1 987,0
Currency and deposits	70,1	-5,8	0,0	-0,3	0,0	64,0
Loans	1 830,4	-21,8	0,0	64,5	-19,6	1 853,5
Monetary authorities	201,9	-0,7	0,0	1,0	-3,5	198,7
General government	1 571,7	-6,2	0,0	60,3	-16,2	1 609,6
Banks	9,6	-0,2	0,0	1,6	0,0	11,0
Other sectors	47,2	-14,7	0,0	1,7	0,0	34,2
Trade credits	152,7	-21,0	0,0	-30,7	-30,7	70,3
Other liabilities	0,0	-0,8	0,0	0,0	0,0	-0,8
C. Net International Investment Position (A-B)	-1 863,4	5,8	2,2	-108,3	66,9	-1 896,9

Table I.41: Developments in Foreign Assets and Liabilities of the Kyrgyz Republic, 2000 - 2 quarter 2004
(mil. US dollars)

	Position 01.01.00	Position 01.01.01	Position 01.01.02	Position 01.01.03	Position 01.01.04	Position 01.07.04
A. Assets	394,2	489,3	488,8	539,7	711,6	593,2
Direct investment abroad	28,7	33,2	39,3	39,3	39,3	-47,4
Portfolio investments	0,2	3,1	3,7	6,2	7,6	0,1
Financial derivatives	7,3	19,5	17,2	0,0	0,0	0,0
Other investments	174,9	229,5	192,8	204,5	305,5	278,0
Currency and deposits	30,8	70,7	35,2	88,7	151,3	161,4
Loans	0,0	2,4	2,8	6,9	6,7	11,7
Monetary authorities	0,0	0,0	0,0	0,0	0,0	0,0
General government	0,0	2,4	2,3	1,5	1,2	1,1
Banks	0,0	0,0	0,5	5,4	5,5	10,6
Other sectors	0,0	0,0	0,0	0,0	0,0	0,0
Trade credits	78,5	99,3	105,4	82,0	117,8	75,0
Other assets	65,6	57,1	49,3	27,0	29,8	29,8
Reserve assets	183,2	204,0	235,9	289,7	359,2	362,6
Monetary gold	1,5	6,3	6,4	7,9	9,6	13,0
SDR	5,1	0,7	1,3	0,6	10,2	9,3
Reserve position in IMF	0,0	0,0	0,0	0,0	0,0	0,0
Foreign exchange	176,6	197,0	228,1	281,2	339,3	340,3
Currency and deposits	109,6	149,2	159,5	259,1	192,4	131,2
Foreign securities	67,0	47,8	68,7	22,1	146,9	209,0
B. Liabilities	2 130,8	2 156,5	2 197,3	2 348,6	2 575,0	2 490,1
Direct investment in KR	431,6	446,6	440,8	479,1	491,5	503,1
Portfolio investments	0,0	9,6	9,7	0,5	5,7	0,0
Financial derivatives	0,0	0,0	0,0	29,7	24,6	0,0
Other investments	1 699,2	1 700,4	1 746,8	1 839,3	2 053,3	1 987,0
Currency and deposits	11,2	2,1	1,1	27,1	70,1	64,0
Loans	1 544,9	1 563,4	1 606,6	1 695,6	1 830,4	1 853,5
Monetary authorities	192,2	191,6	179,3	185,2	201,9	198,7
General government	1 122,2	1 207,5	1 262,1	1 399,6	1 571,7	1 609,6
Banks	4,9	1,6	4,5	11,4	9,6	11,0
Other sectors	225,6	162,6	160,6	99,4	47,2	34,2
Trade credits	143,1	128,4	136,9	116,4	152,7	70,3
Other liabilities	0,0	6,5	2,2	0,1	0,0	-0,8
C. Net International Investment						
Position (A-B)	-1 736,6	-1 667,2	-1 708,5	-1 808,9	-1 863,4	-1 896,9

Table II.1: Sources of Information Used by the National Bank for Compilation of the Balance of Payments of the Kyrgyz Republic

Items of the Balance of Payments	Sources of information	Contents of information
Current account		
Commodities		
Export of goods (f.o.b.) export	NSC	data on export of goods (f.o.b.) based on SCI data and enterprises
commodities purchased in ports	NSC	data on export of bunker fuel based on reports of enterprises according to form 1-services
nonmonetary gold	NSC	data on export of the nonmonetary gold based on SCI data
Import of goods (f.o.b.) import (c.i.f.)	NSC	data on import of goods (c.i.f.) based on SCI and enterprise data
value adjustment	NSC, NBKR	NBKR estimate of the share of transport and insurance services in import at c.i.f. prices on the basis of survey of enterprises
commodities purchased in ports	NSC	data on import of bunker fuel based on reports of enterprises according to form 1-services
Services		
Transportation services	NSC, CB	data on enterprise reports according to form 1-services and the NBKR assessment of the share of transportation costs in import at c.i.f. prices based on surveys of enterprises; data based on banking statistics on transportation services
Travels	NSC	estimate in compliance with the methodology based on the number of residents arriving (leaving) in the Republic (from the Republic)
Communication services	MTC	data on international communication services according to reporting form 1-services (communication)
Construction	NSC, enterprises	data of enterprises enjoying services of non-resident construction companies according to form 1-INSU and from construction organizations rendering services abroad according to form 1-MSU; data from some large enterprises
Insurance services	NSC, enterprises, CB	NBKR assessment by the share of costs in import at c.i.f. prices on the basis of surveys of enterprises; data from enterprises and banking statistics
Financial services	NBKR, CB	NBKR data on rendering and receiving of financial services; data from banking statistics
Computer and information services	CB	data on information and computer services based on banking statistics
Government services	MFA, CB	data on maintenance expenses of the KR representative offices abroad; data on expenses of foreign representative offices in the KR

Table II.1: (continued)

Items of the Balance of Payments	Sources of information	Contents of information
Business services	NSC, CB, enterprises	data on other business technical services, collected from enterprises according to reporting form 8VES-services; data from some large enterprises
including technical assistance	IMF, MF	estimates on technical assistance being received, datas of organizations, wich icarnate investment projects
Other services	NSC, CB	data on other services collected from enterprises according to reporting form 8 VES-services; data on other services from banking statistics
Income		
Employee compensation	NSC, CB, enterprises	data of enterprises on non-resident employee compensation, paid to residents going abroad ; data from banking statistics on transfers abroad
Income on investment		
Income on direct investment	NSC, CB	data on direct investment income collected from joint ventures and foreign enterprises according to reporting form 1-SP; data from banking statistics on direct investment income
Income on portfolio investment	NBKR, CB	data on income of nonresidents earned from investment in the KR securities; data from banking statistics on transactions with securities
Other investment income		
Interest on loans		
Monetary authorities	NBKR	data on interest on IMF loans
General government	MF, NBKR, enterprises	data on interest on credits to the public sector; data from enterprises on interest on Government-guaranteed loans
Banks	CB	data of banking statistics on interest on interbank loans
Other sectors	Enterprises	data on interest on loans to the private sector
Other investment income	NBKR, CB, enterprises	data on profit and expenses of the NBKR, relating to international reserve management; incomes of CB and enterprises from assets abroad
Current transfers		
Humanitarian aid	NSC, enterprises	data on rendered humanitarian aid based on SCI data
Technical assistance	IMF	estimates of technical assistance being received
Other grants	NBKR	data on grants in cash
Contributions to international organizations	MF	data on payments made to international and CIS organizations
Workers' remittances	MT&C, CB	data on household postal-telegraph transfers abroad and from abroad according to form 1-services (communications)

Table II.1: (continued)

Items of the Balance of Payments	Sources of information	Contents of information
Current and financial account		
Capital transfers		
Commodity grants	NSC	estimate of the share of capital goods in the total volume of commodity grants
Migration related transfers	NSC	NBKR estimate of migrants' transfers based on NSC data on the number of arriving and departing migrants
Forgiveness of debt	Enterprises	data of enterprises on debt service, to non-residents
Direct investment		
Abroad	CB	data from banking statistics on residents' direct investment abroad
To the Kyrgyz Republic	NSC, CB, enterprises	data on direct investment collected from joint ventures and foreign enterprises according to reporting form 1-SP; data from banking statistics on direct investment into the banking sector; data of some large joint ventures
Portfolio investment		
Promissory notes	NBKR, CB, SCSM	data on purchase and redemption of the KR securities by non-residents; data from banking statistics on transactions with securities
Financial derivatives	Enterprises	data of enterprises on transactions with financial derivatives
Other investment		
Assets		
Money in cash and deposits		
Banks	CB	data from banking statistics on foreign assets of commercial banks
Other sectors	Enterprises	data on balances of resident enterprises on accounts of banks abroad
Trade loans	NSC	data on mutual settlements of enterprises (debtors' indebtedness)
Other assets		
Monetary authorities	NBKR	data on the NBKR foreign assets not included in reserves
General government	MF	data on payments to international organizations
Liabilities		
Money in cash and deposits		
Banks	CB	data from banking statistics on foreign liabilities of commercial banks
Trade loans	NSC	data on mutual settlements of enterprises (debtors' indebtedness)
Loans		
Monetary authorities	NBKR	data on IMF loans
General government	MF, NBKR, enterprises	data on loans received/repaid by the public sector or under guarantee of the Government
Banks	CB	data from banking statistics on loans received by commercial banks
Other sectors	Enterprises	data on loans received/repaid under no guarantee of the Government
Overdue debts	MF, CB, enterprises	data on overdue payments
Reserve assets	NBKR	data on international reserves and their structure