

BALANCE OF PAYMENTS
Kyrgyz Republic

First Quarter of 2009

July 2009

Bishkek

EDITORIAL BOARD:

Chairman

Z. Chokoev

Members:

Abdybaly tegin S.
L. Tsypkova
S. Urustemov
G. Isajova

Executive Secretary

M. Abdyrahmanov

Balance of Payments of the Kyrgyz Republic

The Balance of Payments of the Kyrgyz Republic is prepared by the National Bank of the Kyrgyz Republic. The periodical describes recent developments in the external sector and contains statistical data on the balance of payments, external trade, international reserves, external debt and an international investment position, as well as a technique and a database to compile the balance of payments. It is published four times a year - in January, May, July, and October. It is published in three languages: Kyrgyz, Russian, and English.

The last data update for this publication: July 20, 2009.

Conventional symbols and notes:

- ... No data available;
- Indicators are equal to 0 (zero) or are insignificant;
- The period between years and months (for instance, 1994 to 1996 or January to June) means the period covering all years and months between the indicated marginal dates.

Due to rounding, when summing-up, figures might not coincide in the final category.

Due to contingent changes in recording procedures or in historical sources used in this publication adjustments could be made to the earlier published data, and the period of 10 years would be, accordingly, considered as the "open period".

On issues relating to this publication, please, apply to the following address:

Tel.: (+996 312) 66-90-57, 66-90-56

Fax: (+996 312) 66-90-55; 61-07-30

Address: 101 Umetaliev Street, city of Bishkek
National Bank of the Kyrgyz Republic
Economic Department
Balance of Payments Division
Email address: mabdyrahmanov@nbkr.kg

Founder: National Bank of the Kyrgyz Republic.

This publication is registered with the Ministry of Justice of the Kyrgyz Republic
Registration Number: 605

NBKR, 2006. Reprint shall be subject to authorization by the National Bank of the Kyrgyz Republic, while in citing references to a source of information shall be mandatory.

Issued by the Polygraph Company "UnitPrint"

73 Moskovskaya Street

Tel.: (312) 35 71 80

Fax: (312) 35 71 67

Other publications of the National Bank of the Kyrgyz Republic

Annual Report of the National Bank of the Kyrgyz Republic

This publication is a full report of the National Bank of the Kyrgyz Republic for the previous year. It contains a fill-in on economic development and a monetary policy, financial statements of the National Bank, general data on the NBKR, and statistical annexes. It is published in three languages: Kyrgyz, Russian, and English.

Bulletin of the National Bank of the Kyrgyz Republic

This information publication contains statistical data on basic macroeconomic indicators and economic sectors of the Kyrgyz Republic. It is published in Kyrgyz, Russian, and English

Review of Inflation in the Kyrgyz Republic

This periodical contains a description of consumer price changes in the republic and its regions, an analysis of basic inflation factors, information on decisions of the National Bank of the Kyrgyz Republic in the area of a monetary policy and gives a forecast of inflation for the forthcoming period. It is published quarterly in Kyrgyz, Russian, and English.

Banking System Development Trends

This publication provides the analysis of the status of the banking system of the Kyrgyz Republic as a financial intermediary, as well as stability of the banking system by its components. It is published semiyearly in Kyrgyz, Russian, and English.

Statutory Acts of the National Bank of the Kyrgyz Republic

The goal of the publication “Statutory Acts of the National Bank of the Kyrgyz Republic” is to officially publish the statutory acts of the National Bank to furnish the commercial banks and the public with the normative documents of the National Bank and to promulgate the banking legislation of the Kyrgyz Republic. The assumptive periodicity of the journal is to publish it once a month in Kyrgyz and Russian.

Press Release of the National Bank of the Kyrgyz Republic

The Press Release of the NBKR contains a chronicle of events in the National Bank and the basic data on the financial market. It is published on the weekly basis in Kyrgyz and Russian.

The publications of the National Bank are disseminated in accordance with lists approved with orders of the Chairman of the National Bank of the Kyrgyz Republic and are placed on its Website at the following address: <http://www.nbkr.kg>.

Dear Readers:

The National Bank of the Kyrgyz Republic is hereby drawing your attention to a revision of data on export of agricultural produce in the section “Foreign Trade” for 2008.

List of Abbreviations

ADB	Asian Development Bank
CB	Commercial banks
CIF	The price at the frontier of the importing country (cost, insurance, and freight)
EBRD	European Bank of Reconstruction and Development
FEACC	Foreign Economic Activity Commodity Classification
FMSRS	Financial Market Supervision and Regulation Service of the Kyrgyz Republic
FOB	The price at the frontier of the exporting country (free on board)
GDP	Gross domestic product
GED	Gross external debt
IDB	Islamic Development Bank
IFAD	International Fund for Agricultural Development
IIP	International investment position
IMF	International Monetary Fund
KR	Kyrgyz Republic
MA	Monetary authorities
MFA	Ministry of Foreign Affairs of the Kyrgyz Republic
MoF	Ministry of Finance of the Kyrgyz Republic
MT&C	Ministry of Transport and Communications of the Kyrgyz Republic
NBKR	National Bank of the Kyrgyz Republic
NDF	Northern Development Fund
NEER	Nominal effective exchange rate
Non-CIS	Countries non-members of the Commonwealth of Independent States
NSC	National Statistics Committee
OED	Overall external debt
OPEC	Organization of Petroleum Exporting Countries
PAAS	Payment assignment accounting system
PED	Public external debt
REER	Real effective exchange rate
SITC	International Standard Trade Classification
UAE	United Arab Emirates
USA	United States of America
WB	World Bank

Contents

Balance of Payments Current Status

Annex I. Tables and Charts

Table I. Balance of payments of the Kyrgyz Republic (standard format)

Table I.2. Distribution of export by the Harmonized System sections

Table I.3. Distribution of export by the SITC sections

Table I.4. Distribution of import by the Harmonized System sections

Table I.5. Distribution of import by the SITC sections

Table I.6. Functional distribution of export

Table I.7. Geographical distribution of export

Table I.8. Functional distribution of import

Table I.9. Geographical distribution of import

Table I.10. Export basic types of products

Table I.11. Import of basic types of products

Table I.12. Price indices and physical quantity of exports

Table I.13. Impact of prices and physical quantity of imports

Basic Types of Exported Goods by Countries

Table I.14. Export of goods to Russia

Table I.15. Export of goods to Kazakhstan

Table I.16. Export of goods to Uzbekistan

Table I.17. Export of goods to Belarus

Table I.18. Export of goods to Switzerland

Table I.19. Export of goods to China

Table I.20. Export of goods to Turkey

Table I.21. Export of goods to the UAE

Table I.22. Export of goods to Afghanistan

Basic Types of Imported Goods by Countries

Table I.23. Import of goods from Russia

Table I.24. Import of goods from Kazakhstan

Table I.25. Import of goods from Uzbekistan

Table I.26. Import of goods from Belarus

Table I.27. Import of goods from Ukraine

Table I.28. Import of goods from China

Table I.29. Import of goods from the USA

Table I.30. Import of goods from Germany

Table I.31. Import of goods from Turkey

Table I.32. Import of goods from Japan

Table I.33. Import of goods from the Republic of Korea

Table I.34. Import of goods from the Netherlands

Chart I.1. Exchange rate and real nominal and effective exchange rate indices

Table I.35. Nominal and real effective exchange rate indices

Table I.36. Geographic distribution of the net inflow of foreign direct investment to the Kyrgyz Republic

Table I.37. Foreign direct investment by economic activity in KR

Table I.38. International reserves

Table I.39. External debt of the Kyrgyz Republic

Table I.40. Structure of external debt of the Kyrgyz Republic by creditors

Table I.41. International investment in the Kyrgyz Republic

Table I.42. Dynamics of foreign assets and liabilities of the Kyrgyz Republic

Annex II: Kyrgyz Republic Balance of Payments Compilation Technique

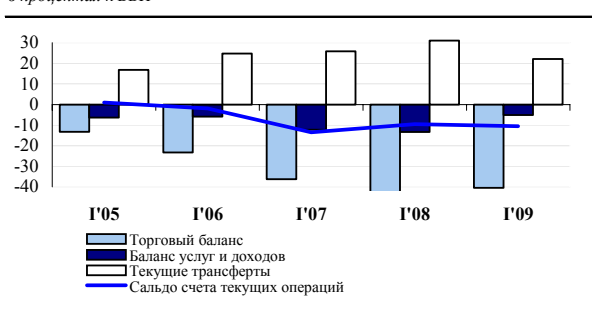
Table II.1. Information sources used by the National Bank for compilation of the balance of payments of the Kyrgyz Republic

1. CURRENT BALANCE OF PAYMENTS STATUS

According to the outcome of the 1st quarter of 2009, the **overall balance of payments** formed negative of US\$ 159.9 million, thereby exceeding 1.9 times the similar value in the first quarter of 2008.

The deficit of the **current account** was 9.5 percent of GDP or US\$ 159.3 million.

График 1: Счет текущих операций
в процентах к ВВП



TRADE BALANCE

The trade balance in the first quarter of 2009 developed as negative - at the level of US\$ 293.4 million.

The foreign trade turnover of the Kyrgyz Republic in the first quarter of 2009 decreased by 15.9 percent as compared to the similar period of 2008 and in terms of value was US\$ 890.4 million. A decline in foreign trade is due to the reduction in both import and export transactions.

The volume of exports of goods at FOB prices decreased by 9.8 percent and was US\$ 298.5 million in the first quarter of 2009 as compared to the first quarter of 2008.

Таблица 1 Экспорт товаров
(млн. долларов США)

	I'05	I'06	I'07	I'08	I'09
Экспорт (FOB)	168,0	200,8	287,3	330,9	298,5
Темп прироста (проценты)	5,8	19,5	43,1	15,1	-9,8

The decline was observed in the functional structure of export in the period of report with regard to all of the items, except for raw material. Intermediate materials (39.8 percent of the total volume of exports), raw material (27.9 percent),

energy resources (15.8 percent) and consumer goods (14.6 percent) were the largest items in a functional distribution of export. Export of *intermediate goods* in the period under review contracted by 23.8 percent, being US\$ 93.6 million in terms of value. This tendency was due to the reduction in deliveries of Portland cement, glass, cotton, and scrap metal. The decrease in the volume of exports of the afore-mentioned goods was partially offset by the increased deliveries of gold to Switzerland. Particularly noticeable growth was registered in export of *raw material* in the first quarter of 2009 – 3.7 times as compared to the first quarter of 2008, thereby totaling US\$ 65.6 million. Mainly, this is due to growth of re-export of various chemicals to third countries. Beside this, growth of deliveries of tobacco was observed with regard to this functional category. The volumes of export deliveries of *energy resources* in the period of report decreased by 42.2 percent, having thus decreased in terms of value to US\$ 37.2 million. The prevalent tendency developed from basically the reduction of the volume of deliveries of jet fuel, vehicle gasoline, diesel fuel, mazut to the non-CIS countries. The volume of exports *consumer goods* contracted by 39.3 percent and was US\$ 34.3 million. The commodity structure of consumer goods displayed the reduction of the volume in value terms of exports of fruit, dairy produce, margarine and compound fat, clothes and accessories, as well as incandescent lamps, whose volumes of deliveries to foreign markets showed the downward tendency in physical terms.

In the geographic structure of export, shares of non-CIS and CIS countries were 65.4 and 34.6 percent, accordingly, in the first quarter of 2009.

Export to the non-CIS countries increased by 8.9 percent, having amounted to US\$153.7 million in terms of value. Kyrgyz export was basically directed to Switzerland, whose share in the total volume of exports was 32.3 percent. Turkey, Afghanistan, China and UAE were again the key partner countries from among the non-CIS

countries in the period of report. It should be noted in this regard that the decline was observed in the export deliveries to these countries. Export to Turkey declined by 28.9 percent due to basically the reduction in the deliveries of jet fuel, cotton, fruit and nuts, as well as textile yarn. Because of the reduction in the deliveries of petroleum products to Afghanistan, the volume of exports to this country contracted by 84.5 percent. A drop in export to China (by 65.5 percent) is caused by the reduction in the deliveries of hides and raw stock, mazut, scrap metal and nonferrous waste. The significant decrease in exports to the UAE from US\$ 21.4 million to US\$ 2.0 million is also the characteristics of the period under review, caused by the reduction of deliveries of gold и jet fuel to this country.

The export deliveries to the CIS countries for the reporting period reached the level of US\$ 81.4 million, having decreased by 35.8 percent as compared to the outcome of the similar period of 2008. The key consumers of Kyrgyz export among the CIS countries were Uzbekistan (40.9 percent of the total volume of exports to the CIS countries), Russia (33.1 percent) and Kazakhstan (19.5 percent). Export to Uzbekistan, based on the outcome of the first quarter of 2009, increased by 16.7 percent, on account of mainly growth of deliveries of jet fuel. In the period of report, export of goods to Russia declined by 48.4 percent. In the structure of export to this country, decreased were, mainly, the deliveries of clothes and accessories, rolled glass, jet fuel (re-export) and cotton. Export to Kazakhstan contracted by 56.4 percent on account of the volume contraction of deliveries of Portland cement, dairy products, margarine and compound fat, incandescent lamps and electricity.

Import of goods at FOB prices in the first quarter of 2009 declined by 18.6 percent as compared to the similar period 2008 and totaled US\$ 591.9 million.

Таблица 2. Импорт товаров
(млн. долларов США)

	Г05	Г06	Г07	Г08	Г09
Импорт (ФОБ)	224,9	310,4	497,3	727,5	591,9
Темп прироста (проценты)	18,4	38,0	60,2	46,3	-18,6

The largest items in the functional structure in the accounting period were those of consumer goods (32.0 percent in the total volume of imports), energy resources (26.7 percent), intermediate materials (22.3 percent), and investment goods (12.0 percent).

Import of *consumer goods* contracted by 25.8 percent and totaled US\$ 204.5 million. This tendency developed on impact of the reduction of import of medicaments, cigarettes, footwear, flour, sugar, meat and meat products, coffee, tea, cocoa and cocoa products.

Receipt of *energy resources* in the period of report contracted by 31.5 percent and was US\$ 170.4 million. The reduction was observed in the commodity structure of import with regard to all of the energy products.

In the first quarter of 2009 the domestic demand for *intermediate materials* grew by 3.0 percent. The following products stand out in the commodity structure of this category: cast iron and steel, cast iron and steel products, fertilizers, and consolidated and reconditioned timber.

Receipt of *investment goods* decreased by 9.0 percent in the period of report and amounted to US\$ 77.0 million in terms of total value. Electric and linear telephone and telegraph devices, machines for automatic data processing, as well as various vehicles were the basic commodity items in this figure.

In the geographic structure, shares of CIS and non-CIS countries in import at CIF prices were 55.8 and 42.2 percent, accordingly, in the first quarter of 2009.

Among the CIS countries the most important suppliers of goods to Kyrgyzstan were Russia, Kazakhstan and Uzbekistan, which provided for 50.9 percent of total import. The basic commodity items of import from the afore-mentioned countries were vehicle gasoline, diesel fuel, jet

fuel, wheat, wheat flour, cigarettes, coal, and natural gas.

Among the non-CIS countries, the basic partners on import transactions were China (44.2 percent in the total volume of imports from the non-CIS countries), the USA (8.6 percent) and Germany (6.7 percent). In the period of report, dynamic growth was noted in import from the Netherlands (2.1 times) and the Republic of Korea (by 5.1 percent), caused by the increased deliveries of various chemical products, and vehicle spare parts and accessories.

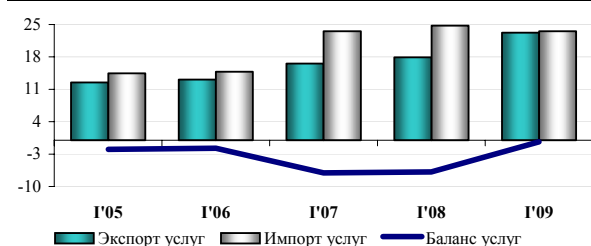
BALANCE OF INTERNATIONAL SERVICES

The turnover of **international services** in January to March 2009 grew by 9.1 percent to US\$368.5 million. The negative balance declined from US\$ 54.1 million to US\$ 2.7 million.

Export of services, based on the outcome of the first quarter of 2009, was US\$182.9 million, and it is more than the comparable indicator of the previous year by 28.9 percent.

This growth was based on the value of transport, business, and other services rendered by nonresidents, as well as the items “Trips”. The total value of the listed items in export of services was US\$ 77.1 million.

График 2: Баланс международных услуг
в процентах к ВВП



The increase in the total volume of exports in the current quarter as well as in the first quarter of 2008 is connected with the increase in the item “Trips”. For instance, the share of services, connected with the trips of nonresidents to the

Kyrgyz Republic increased to 48.6 percent, while their value was US\$ 88.9 million.

Export of other services grew 2.4 times and reached US\$ 29.2 million. The business services grew as well – by 5.1 percent and were US\$1.9 million.

However in the current period the value of transport services, traditionally prevailing in exports, decreased by 8.0 percent to US\$ 29.0 million.

Among other items of export the highest rates of growth were observed in exports of financial services by 6.8 percent in the amount of US\$ 7.0 million.

Import of services was US\$ 185.6 million (in the first quarter of 2008 - US\$195.9 million). In this case, the reduction was observed in the volume of imports of services by 5.3 percent. The decline was due to the reduction of financial, computer and information, construction, and transportation services (22.0 percent, 19.9 percent, 11.5 percent, and 12.7 percent of the decline of import, accordingly).

Growth was observed in imports of services under the item “Trips”, which were US\$ 54.9 million and increased as compared to the base period of the last year by 4.7 percent in connection with growth of the number of citizens of Kyrgyzstan abroad. The upward tendency was also observed with regard to the items of business services (3.8 percent), insurance services (15.1 percent), and communication services (10.1 percent), whose total value was US\$ 24.9 million.

TRANSFERS

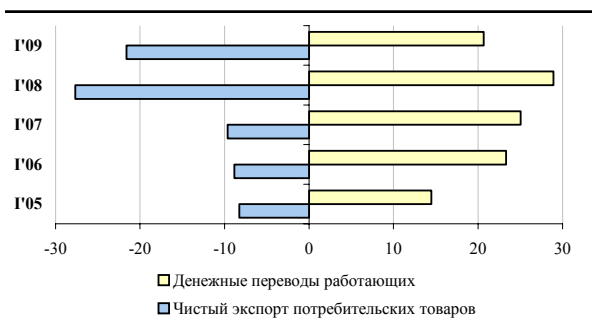
Based on the outcome of the first quarter of 2009, the balance of **current transfers** developed as positive of US\$ 174.1 million and it is lower than the indicator for the similar period of 2008 by 29.2 percent. The basic share in the account of current transfers was that of **workers’ remittances**, whose net inflow for the reporting period contracted by 28.9 percent.

The net inflow of **official transfers** for the first quarter of 2009 was US\$ 6.5 million and it is 1.8 times more than the indicator for the similar period of the last year. This growth was chiefly due to essential growth of the volume of cash grants received by the public sector.

In turn, the largest share in the gross inflow of workers' remittances is that of the remittances in money transfer systems¹ (89.9 percent). For the reporting period the net inflow of remittances in the money transfer systems contracted by 9.0 percent as compared to the first quarter of 2008. The indicated reduction of the volume of remittances did not influence in general the geographic structure of remittances which remains stable for the recent years. For instance, the outcome of the first quarter of 2009 indicates that the basic part of remittances comes from the Russian Federation (86.4 percent), the USA (10.1 percent) and Kazakhstan (3.1 percent). The remittances from the Kyrgyz Republic were basically directed to the Russian Federation (96.8 percent), the USA (2.3 percent) and Kazakhstan (0.5 percent).

It should be noted that for the first time since 2003, the balance of remittances in the period of report does not cover net export of consumer goods, which in turn formed with the deficit of US\$ 170.1 million.

График 3: Сальдо денежных переводов и экспорта потребительских товаров
проценты ВВП



¹ Anelik, Blizko, Contact, Migom, MoneyGram, Western Union, Unistream, Zolotaya Korona, Lider, Sibkontakt, Bystraya Pochta, Allyur and other money transfer systems and the transfers through the SE “Kyrgyzpochtasy”; excluding the NBKR adjustment.

INCOME

Based on the outcome of the first quarter of 2009, the balance of income developed negative as before - to the tune of US\$ 37.3 million, with the balance having decreased by 28.2 percent as compared to the comparable period.

The reduction in this figure was conditioned by, first of all, the reduction of income of foreign direct investors from investment activity of Kyrgyzstan. For instance, as compared to the comparable period of the last year, income of foreign direct investors decreased by 33.0 percent and was US\$ 29.9 million.

Beside this, the reduction of the negative balance of income was due to the increase in portfolio investments abroad, whose absolute value increased by US\$ 3.0 million as compared to the comparable period.

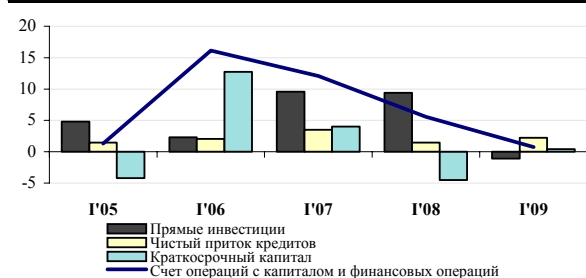
In the period of report, the item “Labor Remuneration” formed negative, as before, and was US\$ 6.0 million because of an excess of income of nonresidents from labor activity in Kyrgyzstan over income of residents from labor activity abroad.

CAPITAL AND FINANCIAL ACCOUNT

The essential reduction of the balance of **capital and financial account** was noted in the first quarter of 2009. The positive balance of this account was US\$ 5.1 million and it is by 88.4 percent less against the comparable period.

График 4: Счет операций с капиталом и финансовых операций

в процентах к ВВП



The **capital account** deficit developed negative in the period of report - to the tune of US\$ 6.3 million and it is by 10.7 percent more

than in the comparable period. The change in this figure was basically due to the operations related to movements of capital of migrants, who had left for permanent residence abroad. Assets, exported by the migrants, are estimated at US\$ 17.4 million, while the assets imported by the migrants were only US\$ 2.3 million. The net position of migrants with regard to the assets for the reporting period was US\$ 15.2 million, and it is by 7.5 percent lower than the indicator of the comparable period.

Proceeding from the outcome of the reporting period, the balance of the **financial account** developed positive of US\$ 11.4 million and it is less than its value in the comparable period 4.4 times. The financial account formed on impact of a net outflow of capital on direct and portfolio investment, on the one hand, and the net inflow of capital on other investment, on the other hand.

The balance of **direct investments formed negative** of US\$ 8.7 million, while in the first quarter of 2008 this indicator developed positive of US\$ 74.5 million. The negative value of this indicator formed as a result of growth of direct investments of residents abroad under the circumstances of the reduction of the net inflow of direct investment in Kyrgyzstan.

For instance, the direct investments of residents abroad were US\$ 1.6 million for the reporting period, while in the period of report this indicator formed negative of US\$ 0.9 million. The direct investments in Kyrgyzstan developed for the reporting period with the negative value equal to US\$ 10.3 million. This being the case, the net inflow amounting to US\$15.7 million was registered with regard to the non-CIS countries provided by basically the inflow of investments from China and Great Britain. Alongside with this, the CIS countries displayed the net outflow of investments totaling US\$ 26.0 million. This was, chiefly, due to growth of return of funds on the earlier received direct investments. The largest volume of repayment of direct investment falls on

Kazakhstan, whose net position was US\$ 29.8 million.

As a result of operations conducted by the commercial banks with foreign securities, the net outflow of capital on portfolio investment amounted to US\$ 10.4 million for the reporting period and it is by 35.2 percent less than the comparable indicator for the first quarter of 2008.

The balance of **other investment** in the period of report formed positive to the tune of US\$30.6 million against the negative value of US\$ 8.4 million in the comparable period. Formation of this item in the period of report was influenced growth of the inflow of funds on foreign liabilities, with the foreign assets of residents of the Kyrgyz Republic abroad having significantly decreased.

The reduction of foreign assets of residents totaling US\$28.0 was noted in the period of report, while in the comparable period growth was observed - US\$ 10.7 million. The dynamics of foreign assets was, mainly, conditioned by growth of assets of commercial banks and the reduction of accounts receivable. For instance, the assets of commercial banks increased by US\$ 24.5 million on account of growth of cash deposits with the foreign banks. With regard to debtor indebtedness, the reduction was on the contrary, noted by US\$ 46.6 million. In addition to that, the reduction by US\$ 8.2 million was observed in the period of report on the accounts of domestic enterprises with the foreign banks.

As earlier, the net inflow of US\$ 2.6 million was noted in the foreign liabilities being by 16.9 percent more than the comparable indicator of 2008. The foreign liabilities developed on impact of the reduction of liabilities of commercial banks and the bills payable, on the one hand, and growth of the volume of external lending, on the other hand.

The net outflow of capital on foreign liabilities of commercial banks was US\$ 2.8 million, caused by repayments by the commercial

banks of their short-term credit liabilities in the amount of US\$ 3.0 million.

At the same time, the reduction was observed in the bills payable by US\$ 12.2 million, while in the comparable period the insignificant increase was registered totaling US\$ 0.4 million.

Despite the reduction of foreign liabilities of commercial banks and the accounts payable, growth of the volume of external lending had its defining impact on development of the net position with regard to the foreign liabilities.

The volume of credits, received from the nonresidents, increased by 54.9 percent and was US\$ 17.6 million, of which the public sector received US\$ 13.9 million, and the private sector - US\$ 3.8 million. Alongside with this, the volumes of funds directed for servicing of the earlier received credits decreased by 45.9 percent.

The item **“Errors and Omissions”** developed with the negative balance in the volume of US\$ 5.6 million, thereby testifying the fact of under-accounting of export transactions, as well as shortcomings in the accounting of the flow of capital to the republic.

Gross international reserves were US\$ 1046.6 million, thereby covering 2.8 months of the critical volume of imports of goods and services.

Table 1. The Balance of Payments of the Kyrgyz Republic
(analytic presentation)
(in millions of US dollars)

	2005	2006	2007	2008	2007		
					I	II	III
Current Account	-38,4	-287,2	-227,7	-578,8	-131,4	-65,7	63,5
Goods and services	-450,5	-968,5	-1195,9	-1952,3	-250,6	-306,4	-256,2
Trade balance*	-418,7	-886,5	-1275,8	-1854,6	-210,0	-306,1	-315,7
Exports (f. o. b)	686,8	906,0	1337,8	1898,9	287,3	298,9	357,9
CIS	305,3	476,1	753,9	1019,1	129,5	173,7	213,8
Non-CIS countries	381,5	429,9	583,9	879,9	157,9	125,2	144,1
Imports (f. o. b)	1105,5	1792,4	2613,6	3753,5	497,3	605,0	673,6
CIS	641,0	925,8	1420,7	2025,4	302,0	320,2	355,1
Non-CIS countries	464,5	866,6	1192,9	1728,1	195,3	284,8	318,5
Balance of services	-31,8	-82,0	79,9	-97,7	-40,6	-0,3	59,5
Rendered services	259,4	378,7	684,8	896,1	95,8	146,6	219,7
Received services	-291,3	-460,8	-604,8	-993,8	-136,5	-147,0	-160,2
Income	-88,2	-48,2	-52,4	-103,2	-30,4	-8,0	-11,1
Direct investment income	-36,0	-39,8	-39,5	-73,9	-28,8	-2,5	-11,8
Portfolio investment income	—	0,1	0,2	0,5	0,1	—	—
Other investment income	-31,8	15,8	7,7	-7,5	3,6	-0,2	5,5
Interest in loans (schedule)	-36,2	-19,9	-25,7	-30,9	-4,1	-7,3	-4,8
Other investment income	4,4	35,6	33,4	23,4	7,7	7,1	10,3
Compensation of employees	-20,4	-24,2	-20,8	-22,3	-5,2	-5,3	-4,8
Current transfers	500,3	729,5	1020,5	1476,7	149,6	248,7	330,8
Capital and financial account	0,9	285,9	266,4	-6,7	69,8	105,9	10,9
Capital account	-20,5	-43,9	-74,9	-44,9	-29,3	-21,2	-9,2
Capital transfers	-20,5	-43,9	-74,9	-44,9	-29,3	-21,2	-9,2
Financial account	21,5	329,7	341,2	38,2	99,1	127,1	20,1
Direct investment**	42,6	182,0	208,1	232,4	55,5	56,6	78,4
Portfolio investment	2,3	-3,0	-17,7	-25,6	-6,1	-7,2	-0,8
Financial derivatives	—	—	—	—	—	—	—
Other investment	-23,4	150,7	150,9	-168,6	49,6	77,6	-57,5
Assets (- accretion)	-47,5	-24,0	19,5	-369,3	20,0	-28,6	-16,2
Banks	-15,1	-17,0	37,7	-115,9	27,5	4,7	-19,4
Other assets	-32,4	-7,0	-18,2	-253,4	-7,5	-33,3	3,2
Liabilities (+ accretion)	24,1	174,7	131,4	200,7	29,7	106,2	-41,2
Banks	-11,9	-26,6	66,6	48,4	38,9	21,0	16,3
Loans	18,4	68,6	51,4	33,3	20,2	13,9	12,7
General government	17,2	56,5	35,1	5,5	7,1	10,8	11,2
Disbursement	67,0	80,7	62,0	41,5	10,0	20,6	16,9
Amortization (schedule)	-49,7	-24,2	-26,9	-36,0	-2,8	-9,8	-5,7
Private sector	1,2	12,1	16,4	27,8	13,1	3,1	1,5
Disbursement	10,0	25,2	40,4	52,3	16,8	13,0	6,2
Amortization (schedule)	-8,8	-13,1	-24,0	-24,4	-3,7	-10,0	-4,7
Other liabilities	17,7	132,7	13,3	119,0	-29,5	71,3	-70,2
Net errors and omissions	66,6	185,1	268,7	669,4	66,9	60,0	33,2
Overall balance	29,1	183,7	307,3	83,8	5,3	100,2	107,7
Financing	-29,1	-183,7	-307,3	-83,8	-5,3	-100,2	-107,7
NBKR reserves	-80,5	-169,9	-306,8	-121,3	-1,8	-100,2	-106,1
IMF loans	-12,5	-23,5	-20,7	18,7	-6,7	-4,7	-6,9
Exceptional financing	63,9	9,7	20,1	18,7	3,2	4,7	5,3
Other financing	—	—	—	—	—	—	—

* including trade by "shuttle traders" (adjustment) and estimates of NBKR and NSC

** including estimate of NBKR

2007	2008				2009	
IV	I	II	III	IV	I	
-94,1	-256,7	-161,4	-26,3	-134,4	-159,3	Current Account
-382,6	-450,7	-554,3	-438,4	-509,0	-296,1	Goods and services
-444,0	-396,6	-496,9	-433,5	-527,6	-293,4	Trade balance
393,7	330,9	438,7	573,2	556,1	298,5	Exports (f. o. b)
237,0	185,7	252,1	348,7	232,5	140,3	CIS
156,7	145,2	186,6	224,5	323,6	158,2	Non-CIS countries
837,7	727,5	935,7	1006,8	1083,7	591,9	Imports (f. o. b)
443,4	417,5	512,9	584,6	510,4	332,0	CIS
394,3	310,0	422,7	422,2	573,2	259,9	Non-CIS countries
61,4	-54,1	-57,4	-4,9	18,6	-2,7	Balance of services
222,5	141,9	193,9	249,2	311,0	182,9	Rendered services
-161,2	-195,9	-251,3	-254,1	-292,5	-185,6	Received services
-2,8	-51,9	-15,2	-33,1	-3,0	-37,3	Income
3,5	-44,6	-7,3	-29,7	7,7	-29,9	Direct investment income
0,2	0,3	—	—	0,2	3,3	Portfolio investment income
-1,1	-2,3	-2,0	1,9	-5,1	-4,7	Other investment income
-9,5	-7,4	-9,2	-5,7	-8,5	-7,9	Interest in loans (schedule)
8,3	5,1	7,2	7,6	3,4	3,2	Other investment income
-5,4	-5,3	-5,8	-5,3	-5,9	-6,0	Compensation of employees
291,3	245,9	408,0	445,2	377,6	174,1	Current transfers
79,7	44,3	68,8	-161,4	41,6	5,1	Capital and financial account
-15,3	-5,7	1,8	-22,0	-19,0	-6,3	Capital account
-15,3	-5,7	1,8	-22,0	-19,0	-6,3	Capital transfers
95,0	50,0	67,0	-139,4	60,6	11,4	Financial account
17,5	74,5	65,0	53,8	39,1	-8,7	Direct investment in the KR
-3,6	-16,1	-4,2	19,6	-25,0	-10,4	Portfolio investment
—	—	—	—	—	—	Financial derivatives
81,1	-8,4	6,2	-212,8	46,4	30,6	Other investment
44,3	-10,7	-94,7	-178,4	-85,6	28,0	Assets (- accretion)
24,9	7,1	-60,3	-8,3	-54,3	-24,5	Banks
19,4	-17,7	-34,4	-170,1	-31,2	52,5	Other assets
36,8	2,2	100,9	-34,4	132,0	2,6	Liabilities (+ accretion)
-9,6	-9,5	7,8	-39,4	89,5	-2,8	Banks
4,6	11,4	21,7	13,9	-13,6	17,6	Loans
5,9	2,7	7,5	3,8	-8,6	13,9	General government
14,4	8,1	19,0	10,3	4,1	17,7	Disbursement
-8,6	-5,3	-11,5	-6,5	-12,7	-3,8	Amortization (schedule)
-1,2	8,7	14,2	10,1	-5,1	3,8	Private sector
4,4	13,0	17,1	18,8	3,3	5,2	Disbursement
-5,6	-4,4	-3,0	-8,7	-8,4	-1,4	Amortization (schedule)
41,8	0,4	71,4	-8,9	56,1	-12,2	Other liabilities
108,6	128,0	159,4	309,2	72,8	-5,6	Net errors and omissions
94,1	-84,5	66,8	121,5	-19,9	-159,9	Overall balance
-94,1	84,5	-66,8	-121,5	19,9	159,9	Financing
-98,6	89,8	-86,1	-112,1	-12,8	164,9	NBKR reserves
-2,4	-9,0	14,6	-10,8	23,9	-10,0	IMF loans
6,8	3,7	4,8	1,4	8,8	5,0	Exceptional financing
—	—	—	—	—	—	Other financing

Annex I. Tables and Charts

Table I.1: Balance of Payments of the Kyrgyz Republic (standard presentation)*(in millions of US dollars)*

	2005	2006	2007	2008	2007		
					I	II	III
Current Account	-38,4	-287,2	-227,7	-578,8	-131,4	-65,7	63,5
Goods and services	-450,5	-968,5	-1195,9	-1952,3	-250,6	-306,4	-256,2
Goods*	-418,7	-886,5	-1275,8	-1854,6	-210,0	-306,1	-315,7
Export of goods (f.o.b.)	686,8	906,0	1337,8	1898,9	287,3	298,9	357,9
exports	456,1	604,8	927,1	1249,5	202,1	205,4	245,5
goods procured in ports	—	—	—	—	—	—	—
nonmonetary gold	230,7	206,0	224,7	463,5	51,2	55,9	62,4
adjustment to coverage	—	95,2	186,0	186,0	34,1	37,7	50,1
goods for processing	—	—	—	—	—	—	—
Import of goods (f.o.b.)	-1105,5	-1792,4	-2613,6	-3753,5	-497,3	-605,0	-673,6
imports (c.i.f.)	-1099,5	-1715,8	-2408,6	-4056,2	-488,3	-554,5	-627,7
valuation adjustment	86,3	138,7	179,9	318,9	37,5	41,4	46,7
goods procured in ports	-2,8	-2,4	-8,4	-16,3	-0,1	-0,1	-0,1
adjustment to coverage	-90,5	-212,9	-376,5	—	-46,4	-91,7	-92,3
goods for processing	1,0	—	—	—	—	—	—
Services	-31,8	-82,0	79,9	-97,7	-40,6	-0,3	59,5
exports	259,4	378,7	684,8	896,1	95,8	146,6	219,7
imports	-291,3	-460,8	-604,8	-993,8	-136,5	-147,0	-160,2
Transportation services	-64,9	-121,4	-197,8	-342,3	-48,1	-45,4	-54,5
exports	60,6	56,6	139,3	146,4	21,3	37,6	34,8
imports	-125,5	-178,0	-337,1	-488,7	-69,5	-82,9	-89,3
Railroad transport	-57,0	-89,1	-177,7	-283,5	-35,7	-40,6	-47,5
exports	17,2	20,1	34,4	46,0	9,0	8,7	8,7
imports	-74,2	-109,2	-212,2	-329,5	-44,7	-49,3	-56,2
Air transport	8,6	-0,9	12,6	5,6	-4,5	3,2	2,2
exports	36,5	32,2	92,5	92,8	10,2	25,6	23,3
imports	-27,9	-33,0	-79,9	-87,3	-14,7	-22,5	-21,1
Road transport	-15,1	-26,3	-20,5	-33,2	-5,4	-5,3	-4,9
exports	2,3	1,7	2,9	2,2	0,5	0,4	0,6
imports	-17,4	-28,0	-23,5	-35,5	-5,9	-5,7	-5,6
Other types of transport	-1,4	-5,2	-12,1	-31,2	-2,5	-2,6	-4,2
exports	4,4	2,6	9,5	5,3	1,7	2,9	2,2
imports	-5,9	-7,8	-21,6	-36,5	-4,1	-5,5	-6,4
Travels	14,6	75,3	233,6	210,1	15,9	32,7	92,0
exports	73,0	167,0	346,0	514,5	40,7	64,5	121,4
imports	-58,4	-91,6	-112,4	-304,4	-24,8	-31,8	-29,4
Business	0,5	23,2	89,2	59,9	4,4	10,9	36,6
exports	31,4	71,8	148,8	221,2	17,5	27,7	52,2
imports	-30,9	-48,6	-59,6	-161,3	-13,1	-16,9	-15,6
Personal	14,2	52,1	144,4	150,2	11,5	21,8	55,4
exports	41,6	95,2	197,2	293,3	23,2	36,8	69,2
imports	-27,4	-43,1	-52,8	-143,1	-11,6	-14,9	-13,8
Communication services	0,4	4,2	4,6	3,9	1,4	1,3	1,4
exports	6,4	10,1	12,0	16,4	2,9	2,9	3,5
imports	-6,0	-5,9	-7,4	-12,6	-1,4	-1,6	-2,1
Construction services	16,8	16,4	5,0	10,4	0,3	3,5	0,7
exports	19,0	19,7	16,8	20,8	1,8	5,4	5,8
imports	-2,1	-3,3	-11,8	-10,5	-1,5	-1,9	-5,1
Insurance services	-14,7	-16,9	-4,4	-2,5	-1,6	-1,4	-2,2
exports	0,2	1,4	5,0	8,3	0,8	0,9	0,2
imports	-14,9	-18,3	-9,4	-10,8	-2,4	-2,3	-2,3

* Including estimate of NBKR and NSC

		2008			2009		
IV	I	II	III	IV	I		
-94,1	-256,7	-161,4	-26,3	-134,4	-159,3		Current Account
-382,6	-450,7	-554,3	-438,4	-509,0	-296,1		Goods and services
-444,0	-396,6	-496,9	-433,5	-527,6	-293,4		Goods*
393,7	330,9	438,7	573,2	556,1	298,5		Export of goods (f.o.b.)
274,2	222,9	307,8	419,3	299,4	188,7		exports
—	—	—	—	—	—		goods procured in ports
55,3	73,9	93,2	103,9	192,5	75,7		nonmonetary gold
64,2	34,1	37,7	50,1	64,2	34,1		adjustment to coverage
—	—	—	—	—	—		
-837,7	-727,5	-935,7	-1006,8	-1083,7	-591,9		Import of goods (f.o.b.)
-738,0	-785,7	-1013,2	-1086,0	-1171,3	-639,5		imports (c.i.f.)
54,3	61,0	81,9	85,0	91,0	47,6		valuation adjustment
-8,1	-2,7	-4,4	-5,8	-3,3	—		goods procured in ports
-146,0	—	—	—	—	—		adjustment to coverage
—	—	—	—	—	—		goods for processing
61,4	-54,1	-57,4	-4,9	18,6	-2,7		Services
222,5	141,9	193,9	249,2	311,0	182,9		exports
-161,2	-195,9	-251,3	-254,1	-292,5	-185,6		imports
-49,9	-70,2	-90,8	-86,5	-94,9	-59,7		Transportation services
45,6	31,5	31,9	42,4	40,6	29,0		exports
-95,4	-101,6	-122,7	-128,8	-135,6	-88,7		imports
-53,9	-55,5	-68,5	-77,3	-82,2	-49,5		Railroad transport
8,0	9,8	12,5	12,1	11,6	7,3		exports
-61,9	-65,2	-81,0	-89,4	-93,8	-56,8		imports
11,8	-2,9	-5,5	7,8	6,2	0,4		Air transport
33,4	19,9	18,0	27,5	27,5	20,2		exports
-21,6	-22,8	-23,5	-19,7	-21,3	-19,8		imports
-4,8	-6,0	-8,7	-9,1	-9,4	-5,8		Road transport
1,5	0,5	0,6	0,5	0,7	0,7		exports
-6,3	-6,5	-9,3	-9,6	-10,1	-6,4		imports
-2,9	-5,7	-8,0	-7,9	-9,6	-4,8		Other types of transport
2,7	1,3	0,9	2,3	0,8	0,8		exports
-5,6	-7,0	-8,9	-10,2	-10,4	-5,6		imports
93,0	12,4	29,2	72,8	95,6	34,1		Travels
119,4	64,9	106,3	146,7	196,6	88,9		exports
-26,4	-52,5	-77,1	-73,9	-101,0	-54,9		imports
37,3	0,1	4,9	23,9	31,0	9,2		Business
51,3	27,9	45,7	63,1	84,5	38,2		exports
-14,0	-27,8	-40,9	-39,1	-53,5	-29,1		imports
55,6	12,3	24,4	48,9	64,6	24,9		Personal
68,1	37,0	60,6	83,6	112,1	50,7		exports
-12,4	-24,7	-36,2	-34,7	-47,5	-25,8		imports
0,4	1,2	1,4	0,7	0,6	-0,2		Communication services
2,7	3,7	4,3	4,3	4,1	2,6		exports
-2,3	-2,5	-2,9	-3,7	-3,4	-2,8		imports
0,6	2,3	3,7	3,0	1,4	2,1		Construction services
3,8	4,8	6,0	5,2	4,8	4,3		exports
-3,3	-2,5	-2,3	-2,2	-3,4	-2,2		imports
0,8	0,3	1,5	-2,4	-1,9	-1,6		Insurance services
3,2	2,6	4,3	0,5	0,9	1,0		exports
-2,4	-2,2	-2,9	-2,9	-2,8	-2,6		imports

Table I.1: (continued)

	2005	2006	2007	2008	2007		
					I	II	III
Financial services	-0,7	-1,6	-5,4	4,4	-0,4	—	-4,3
exports	3,8	2,0	3,7	13,5	0,9	0,9	0,7
imports	-4,4	-3,6	-9,0	-9,1	-1,3	-0,8	-5,0
Computer and information services	-1,0	-0,4	-3,2	-13,2	-0,4	-0,4	-1,2
exports	1,2	1,3	1,1	1,4	0,1	0,3	0,2
imports	-2,2	-1,7	-4,4	-14,6	-0,5	-0,7	-1,4
Government services	21,6	22,5	25,5	6,1	4,9	5,5	13,2
exports	25,9	27,3	30,7	11,6	6,1	6,9	14,5
imports	-4,2	-4,8	-5,2	-5,5	-1,2	-1,5	-1,3
Business services	10,2	-40,5	2,9	-5,8	-11,4	3,5	4,4
exports	62,7	83,1	84,8	93,7	16,0	19,2	22,4
imports	-52,5	-123,7	-82,0	-99,5	-27,4	-15,7	-18,0
of which Technical assistance	-21,0	-21,1	-20,4	-20,9	-5,0	-5,0	-5,1
Other services	-14,3	-19,8	19,1	31,3	-1,3	0,5	9,9
exports	6,7	10,2	45,3	69,4	5,2	8,1	16,2
imports	-21,0	-29,9	-26,2	-38,1	-6,5	-7,6	-6,3
Income	-88,2	-48,2	-52,4	-103,2	-30,4	-8,0	-11,1
Compensation of employees	-20,4	-24,2	-20,8	-22,3	-5,2	-5,3	-4,8
Investment income	-67,8	-24,0	-31,6	-80,9	-25,2	-2,7	-6,3
Direct investments	-36,0	-39,8	-39,5	-73,9	-28,8	-2,5	-11,8
Distributed profit	-2,3	-14,0	-0,2	-1,6	-7,2	5,9	1,3
Reinvested incomes	-30,7	-21,0	-33,6	-54,1	-19,7	-5,7	-12,6
Income from debt (interests)	-3,0	-4,8	-5,8	-18,2	-1,9	-2,6	-0,5
Portfolio investments	—	0,1	0,2	0,5	0,1	—	—
Other investments	-31,8	15,8	7,7	-7,5	3,6	-0,2	5,5
Interest on loans (schedule)	-36,2	-19,9	-25,7	-30,9	-4,1	-7,3	-4,8
Monetary authorities	-1,0	-0,9	-0,8	-0,7	—	-0,4	—
General government	-30,9	-16,9	-17,7	-19,3	-2,8	-5,2	-2,9
Banks	0,1	-1,6	-5,6	-8,1	-1,0	-1,3	-1,7
Other sectors	-4,4	-0,5	-1,6	-2,8	-0,3	-0,5	-0,2
Other investment income	4,4	35,6	33,4	23,4	7,7	7,1	10,3
Current transfers	500,3	729,5	1020,5	1476,7	149,6	248,7	330,8
General government	23,0	12,4	30,9	45,9	1,8	10,6	10,8
Humanitarian assistance	14,7	10,4	11,5	12,3	2,3	1,4	6,5
Technical assistance	—	—	—	—	—	—	—
Contributions to international organizations	-1,6	-4,7	-3,4	-3,6	-0,5	-0,8	-1,0
Other grants	10,0	6,7	22,8	37,1	—	10,0	5,2
Other sectors	477,3	717,1	989,6	1430,8	147,8	238,1	320,0
Workers' remittances	448,7	686,7	953,4	1393,1	145,1	222,6	317,8
Inflow	481,5	730,6	1023,2	1469,6	159,1	240,1	335,1
Outflow	-32,8	-43,9	-69,8	-76,5	-14,0	-17,6	-17,3
Other transfers	28,6	30,4	36,2	37,7	2,7	15,6	2,2
Capital and Financial Account	-28,1	102,1	-41,0	-90,6	64,5	5,7	-96,7
Capital account	-20,5	-43,9	-74,9	-44,9	-29,3	-21,2	-9,2
Capital transfers	-20,5	-43,9	-74,9	-44,9	-29,3	-21,2	-9,2
General government	23,1	29,4	36,3	36,6	8,5	6,7	15,3
Grant in form of goods	3,1	9,4	16,3	16,6	3,5	1,7	10,3
Technical assistance	20,0	20,0	20,0	20,0	5,0	5,0	5,0
Other sectors	-43,7	-73,3	-111,2	-81,5	-37,8	-27,9	-24,5
Transfers related to migration*	-63,5	-73,6	-119,8	-89,4	-38,1	-31,0	-28,8
Inflow	8,7	8,1	9,4	8,3	2,4	2,1	2,3
Outflow	-72,2	-81,7	-129,1	-97,6	-40,4	-33,2	-31,1
Forgiveness of debt	19,0	—	—	—	—	—	—
Other transfers	0,8	0,3	8,6	7,9	0,3	3,1	4,3

* NBKR estimates starting from quarter 3 of 2005

	2008			2009		
	IV	I	II	III	IV	
-0,8	-0,6	0,2	1,0	3,8	5,8	Financial services
1,1	1,0	2,8	4,6	5,1	7,0	exports
-1,9	-1,6	-2,6	-3,7	-1,3	-1,2	imports
-1,2	-3,4	-2,7	-2,9	-4,3	-2,8	Computer and information services
0,5	0,3	0,2	0,4	0,5	0,1	exports
-1,7	-3,7	-2,9	-3,2	-4,8	-3,0	imports
2,0	1,2	1,7	1,9	1,4	-0,5	Government services
3,2	2,7	3,5	3,1	2,3	1,7	exports
-1,2	-1,5	-1,9	-1,2	-0,8	-2,1	imports
6,4	-0,7	-4,6	-1,3	0,9	-0,5	Business services
27,2	18,1	19,6	24,9	31,1	19,0	exports
-20,8	-18,8	-24,3	-26,2	-30,2	-19,5	imports
-5,2	-5,1	-5,1	-5,3	-5,5	-5,0	of which Technical assistance
10,0	3,3	3,2	8,9	16,0	20,6	Other services
15,7	12,2	14,9	17,2	25,1	29,2	exports
-5,7	-8,9	-11,7	-8,3	-9,1	-8,5	imports
-2,8	-51,9	-15,2	-33,1	-3,0	-37,3	Income
-5,4	-5,3	-5,8	-5,3	-5,9	-6,0	Compensation of employees
2,6	-46,6	-9,3	-27,8	2,9	-31,3	Investment income
3,5	-44,6	-7,3	-29,7	7,7	-29,9	Direct investments
-0,1	-0,8	-2,3	1,5	—	—	Distributed profit
4,5	-43,0	-2,9	-20,3	12,0	-29,4	Reinvested incomes
-0,8	-0,9	-2,1	-10,9	-4,2	-0,5	Income from debt (interests)
0,2	0,3	—	—	0,2	3,3	Portfolio investments
-1,1	-2,3	-2,0	1,9	-5,1	-4,7	Other investments
-9,5	-7,4	-9,2	-5,7	-8,5	-7,9	Interest on loans (schedule)
-0,4	—	-0,4	—	-0,4	—	Monetary authorities
-6,8	-5,0	-6,1	-3,0	-5,2	-3,8	General government
-1,7	-1,9	-2,0	-1,8	-2,3	-3,2	Banks
-0,6	-0,5	-0,7	-0,9	-0,7	-0,9	Other sectors
8,3	5,1	7,2	7,6	3,4	3,2	Other investment income
291,3	245,9	408,0	445,2	377,6	174,1	Current transfers
7,8	3,5	18,5	2,6	21,3	6,5	General government
1,3	4,3	4,5	1,5	2,1	3,1	Humanitarian assistance
—	—	—	—	—	—	Technical assistance
-1,1	-0,8	-1,0	-0,8	-1,0	-0,9	Contributions to international organizations
7,6	—	15,1	1,9	20,2	4,3	Other grants
283,6	242,3	389,5	442,6	356,3	167,6	Other sectors
267,9	229,1	380,9	439,7	343,3	162,8	Workers' remittances
288,9	246,0	397,7	461,1	364,9	178,8	Inflow
-21,0	-16,9	-16,8	-21,4	-21,5	-16,0	Outflow
15,6	13,2	8,6	2,9	13,0	4,8	Other transfers
-14,5	128,7	2,1	-282,9	61,5	165,0	Capital and Financial Account
-15,3	-5,7	1,8	-22,0	-19,0	-6,3	Capital account
-15,3	-5,7	1,8	-22,0	-19,0	-6,3	Capital transfers
5,7	7,7	15,1	5,9	7,9	7,9	General government
0,7	2,7	10,1	0,9	2,9	2,9	Grant in form of goods
5,0	5,0	5,0	5,0	5,0	5,0	Technical assistance
-21,0	-13,4	-13,3	-28,0	-26,8	-14,3	Other sectors
-21,9	-14,1	-19,4	-28,7	-27,2	-15,2	Transfers related to migration*
2,5	2,1	1,8	2,1	2,3	2,3	Inflow
-24,4	-16,2	-21,2	-30,8	-29,5	-17,4	Outflow
—	—	—	—	—	—	Forgiveness of debt
0,8	0,7	6,1	0,7	0,3	0,9	Other transfers

Table I.1: (continued)

	2005	2006	2007	2008	2007		
					I	II	III
Financial account	-7,6	146,0	33,9	-45,6	93,7	26,9	-87,6
Direct investment*	42,6	182,0	208,1	232,4	55,5	56,6	78,4
Abroad	—	—	0,2	-0,3	0,5	0,5	-1,0
In the Kyrgyz Republic	42,6	182,0	207,9	232,7	55,0	56,1	79,4
Inflow	210,3	410,6	436,8	653,2	87,3	119,3	117,9
Outflow	-167,7	-228,6	-228,9	-420,5	-32,3	-63,1	-38,4
In the share capital	16,2	31,5	16,4	16,3	19,8	-15,2	3,7
Inflow	33,0	73,5	64,5	40,7	20,7	12,6	4,4
Outflow	-16,8	-42,0	-48,1	-24,4	-1,0	-27,9	-0,7
Reinvestment income	30,7	21,0	33,6	54,1	19,7	5,7	12,6
Other capital	-4,3	129,5	157,9	162,2	15,6	65,6	63,1
Inflow	146,6	316,0	338,7	558,4	46,9	100,9	100,9
Outflow	-150,9	-186,5	-180,8	-396,2	-31,3	-35,3	-37,7
Portfolio investment	2,3	-3,0	-17,7	-25,6	-6,1	-7,2	-0,8
Assets	2,3	-3,0	-19,2	-31,8	-6,3	-7,2	-2,0
Debt securities	2,3	-3,0	-19,0	-31,8	-6,1	-7,2	-2,0
Liabilities	—	—	1,5	6,2	0,2	—	1,1
In the share capital	—	—	1,5	6,2	0,2	—	1,1
Debt securities	—	—	—	—	—	—	—
Financial derivatives	—	—	—	—	—	—	—
Assets	—	—	—	—	—	—	—
Other sectors	—	—	—	—	—	—	—
Other investments	28,1	136,9	150,3	-131,1	46,1	77,6	-59,0
Assets	-47,5	-24,0	19,5	-369,3	20,0	-28,6	-16,2
Currency and deposits	-21,4	-11,7	26,8	-119,2	22,8	5,5	-20,0
Banks	-15,1	-17,0	37,7	-115,9	27,5	4,7	-19,4
Other sectors	-6,3	5,2	-10,8	-3,3	-4,7	0,8	-0,5
Trade credits	-45,1	-13,5	-27,6	-230,8	-4,1	-33,4	-0,3
Other sectors	-45,1	-13,5	-27,6	-230,8	-4,1	-33,4	-0,3
Long - term	-30,2	-9,1	-18,5	-154,6	-2,8	-22,4	-0,2
Short - term	-14,9	-4,5	-9,1	-76,2	-1,4	-11,0	-0,1
Other assets	19,0	1,3	20,3	-19,3	1,4	-0,7	4,1
Monetary authorities	18,7	1,0	20,0	-19,3	1,3	-0,8	4,0
General government	0,3	0,3	0,3	—	0,1	0,1	0,1
Liabilities	75,6	160,8	130,8	238,2	26,2	106,2	-42,8
Currency and deposits	-18,2	-36,3	81,1	46,8	50,2	24,0	15,6
Banks	-18,2	-36,3	81,1	46,8	50,2	24,0	15,6
Trade credits	19,8	132,7	13,3	119,0	-29,5	71,3	-70,2
Other sectors	19,8	132,7	13,3	119,0	-29,5	71,3	-70,2
Long - term	10,9	73,0	7,3	65,5	-16,2	39,2	-38,6
Short - term	8,9	59,7	6,0	53,6	-13,3	32,1	-31,6
Loans	12,2	54,7	16,2	53,7	2,3	6,2	6,5
Disbursement	183,2	147,8	111,5	137,6	28,3	37,4	24,5
Monetary authorities	18,4	3,8	4,0	42,2	—	1,9	—
Long - term	18,4	3,8	4,0	42,2	—	1,9	—
General government	67,0	80,7	62,0	41,5	10,0	20,6	16,9
Long - term	67,0	80,7	62,0	41,5	10,0	20,6	16,9
Short - term	—	—	—	—	—	—	—

* including estimate of NBKR

		2008			2009		
IV	I	II	III	IV	I		
0,8	134,4	0,2	-260,8	80,5	171,3		Financial account
17,5	74,5	65,0	53,8	39,1	-8,7		Direct investment*
0,2	-0,9	0,8	—	-0,1	1,6		Abroad
17,3	75,3	64,3	53,8	39,3	-10,3		In the Kyrgyz Republic
112,4	117,2	185,8	178,0	172,2	152,8		Inflow
-95,1	-41,9	-121,6	-124,2	-133,0	-163,0		Outflow
8,2	0,5	4,2	6,2	5,5	5,8		In the share capital
26,8	4,4	13,7	10,5	12,1	18,6		Inflow
-18,6	-3,9	-9,5	-4,3	-6,6	-12,8		Outflow
-4,5	43,0	2,9	20,3	-12,0	29,4		Reinvestment income
13,6	31,9	57,2	27,4	45,7	-45,5		Other capital
90,1	69,8	169,2	147,2	172,1	104,8		Inflow
-76,5	-37,9	-112,0	-119,9	-126,3	-150,3		Outflow
-3,6	-16,1	-4,2	19,6	-25,0	-10,4		Portfolio investment
-3,8	-16,1	-4,2	13,4	-25,0	-10,0		Assets
-3,8	-16,1	-4,2	13,4	-25,0	-10,0		Debt securities
0,2	—	—	6,2	—	-0,4		Liabilities
0,2	—	—	6,2	—	-0,4		In the share capital
—	—	—	—	—	—		Debt securities
—	—	—	—	—	—		Financial derivatives
—	—	—	—	—	—		Assets
—	—	—	—	—	—		Liabilities
85,5	-13,8	25,5	-222,1	79,2	25,6		Other investments
44,3	-10,7	-94,7	-178,4	-85,6	28,0		Assets
18,6	25,6	-83,9	13,2	-74,1	-16,3		Currency and deposits
24,9	7,1	-60,3	-8,3	-54,3	-24,5		Banks
-6,3	18,5	-23,6	21,5	-19,8	8,2		Other sectors
10,2	-28,6	-8,8	-184,7	-8,7	46,6		Trade credits
10,2	-28,6	-8,8	-184,7	-8,7	46,6		Other sectors
6,9	-19,2	-5,9	-123,7	-5,8	31,2		Long - term
3,4	-9,4	-2,9	-60,9	-2,9	15,4		Short - term
15,5	-7,6	-2,0	-6,9	-2,8	-2,3		Other assets
15,5	-7,6	-2,0	-6,9	-2,8	-2,3		Monetary authorities
0,1	—	—	—	—	—		General government
41,2	-3,1	120,2	-43,7	164,8	-2,4		Liabilities
-8,7	-11,1	7,8	-39,4	89,5	0,2		Currency and deposits
-8,7	-11,1	7,8	-39,4	89,5	0,2		Banks
41,8	0,4	71,4	-8,9	56,1	-12,2		Trade credits
41,8	0,4	71,4	-8,9	56,1	-12,2		Other sectors
23,0	0,2	39,3	-4,9	30,9	-6,7		Long - term
18,8	0,2	32,1	-4,0	25,3	-5,5		Short - term
1,3	4,0	36,2	3,2	10,3	4,7		Loans
21,4	22,7	52,6	29,1	33,1	22,9		Disbursement
2,0	—	16,5	—	25,7	—		Monetary authorities
2,0	—	16,5	—	25,7	—		Long - term
14,4	8,1	19,0	10,3	4,1	17,7		General government
14,4	8,1	19,0	10,3	4,1	17,7		Long - term
—	—	—	—	—	—		Short - term

Table I.1: (continued)

	2005	2006	2007	2008	2007		
					I	II	III
Banks	87,9	38,1	12,2	24,1	6,5	1,8	1,5
Long - term	—	—	7,0	22,5	5,0	—	—
Short - term	87,9	38,1	5,2	1,6	1,5	1,8	1,5
Other sectors	10,0	25,2	33,4	29,8	11,8	13,0	6,2
Long - term	10,0	25,2	33,4	29,8	11,8	13,0	6,2
Short - term	—	—	—	—	—	—	—
Amortization (schedule)	-171,1	-93,1	-95,3	-83,9	-26,0	-31,2	-18,0
Monetary authorities	-30,9	-27,3	-24,6	-23,4	-6,7	-6,6	-6,9
Long - term	-30,9	-27,3	-24,6	-23,4	-6,7	-6,6	-6,9
General government	-49,7	-24,2	-26,9	-36,0	-2,8	-9,8	-5,7
Long - term	-49,7	-24,2	-26,9	-36,0	-2,8	-9,8	-5,7
Short - term	—	—	—	—	—	—	—
Banks	-81,7	-28,5	-20,1	-12,6	-12,7	-4,8	-0,8
Long - term	—	—	-0,4	-12,6	—	—	—
Short - term	-81,7	-28,5	-19,8	—	-12,7	-4,8	-0,8
Other sectors	-8,8	-13,1	-23,6	-11,9	-3,7	-10,0	-4,7
Long - term	-8,8	-13,1	-23,6	-11,9	-3,7	-10,0	-4,7
Short - term	—	—	—	—	—	—	—
Arrears	63,9	9,7	20,1	18,7	3,2	4,7	5,3
General government	63,8	6,6	3,6	2,8	0,6	0,8	1,0
Other sectors	0,1	3,1	16,5	15,9	2,6	3,9	4,3
Other liabilities	-2,1	—	—	—	—	—	—
Monetary authorities	—	—	—	—	—	—	—
Other sectors	-2,1	—	—	—	—	—	—
Reserve assets	-80,5	-169,9	-306,8	-121,3	-1,8	-100,2	-106,1
Monetary gold	-18,7	—	—	—	—	—	—
SDR	12,9	-26,8	20,4	-43,4	6,4	4,8	6,6
Foreign exchange	-74,8	-143,1	-327,1	-77,9	-8,2	-105,0	-112,7
Net errors and omissions	66,6	185,1	268,7	669,4	66,9	60,0	33,2
Overall Balance	0,0	0,0	0,0	0,0	0,0	0,0	0,0

Comment:

Long-term investments are investments in financial assets, whose initial maturity was set up, in compliance with a contract, as more than one year or has never been stipulated

Short-term investment are investments in financial assets, with maturity of one year or less than one year, pursuant to contract, or paid as short notice

2008				2009		
IV	I	II	III	IV	I	
2,5	5,6	5,5	12,2	0,8	2,0	Banks
2,0	4,0	5,5	12,2	0,8	2,0	Long - term
0,5	1,6	—	—	—	—	Short - term
2,4	9,0	11,6	6,5	2,6	3,2	Other sectors
2,4	9,0	11,6	6,5	2,6	3,2	Long - term
—	—	—	—	—	—	Short - term
-20,1	-18,7	-16,4	-26,0	-22,8	-18,2	Amortization (schedule)
-4,4	-9,0	-1,9	-10,8	-1,8	-10,0	Monetary authorities
-4,4	-9,0	-1,9	-10,8	-1,8	-10,0	Long - term
-8,6	-5,3	-11,5	-6,5	-12,7	-3,8	General government
-8,6	-5,3	-11,5	-6,5	-12,7	-3,8	Long - term
—	—	—	—	—	—	Short - term
-1,9	-2,1	-0,5	-6,3	-3,6	-3,1	Banks
-0,4	-2,1	-0,5	-6,3	-3,6	-0,1	Long - term
-1,5	—	—	—	—	-3,0	Short - term
-5,3	-2,3	-2,5	-2,4	-4,8	-1,3	Other sectors
-5,3	-2,3	-2,5	-2,4	-4,8	-1,3	Long - term
—	—	—	—	—	—	Short - term
6,8	3,7	4,8	1,4	8,8	5,0	Arrears
1,2	2,1	—	0,5	0,2	—	General government
5,6	1,6	4,8	0,9	8,7	5,0	Other sectors
—	—	—	—	—	—	Other liabilities
—	—	—	—	—	—	Monetary authorities
—	—	—	—	—	—	Other sectors
-98,6	89,8	-86,1	-112,1	-12,8	164,9	Reserve assets
—	—	—	—	—	—	Monetary gold
2,6	8,9	-38,9	10,5	-23,8	9,9	SDR
-101,2	80,9	-47,2	-122,6	11,0	155,0	Foreign exchange
108,6	128,0	159,4	309,2	72,8	-5,6	Net errors and omissions
0,0	0,0	0,0	0,0	0,0	0,0	Overall Balance

Table I.2: Structure of Export by the HS sections
(in millions of US dollars)

Group of products	2005	2006	2007	2008	I.08	I.09
Total	672,0	794,1	1134,2	1642,1	268,0	235,1
Live animals and animal products	18,1	23,6	31,0	37,0	9,6	6,8
Vegetable products	19,9	36,6	80,3	95,6	10,1	11,3
Fats and animal or vegetable oil	1,9	8,2	9,2	10,8	3,1	1,1
Food prod., strong & soft drinks and vinegar,tobacco	37,2	28,9	37,3	37,1	7,7	7,1
Mineral products*	96,8	177,8	330,0	476,5	74,8	39,0
Products of chemistry and related industries	13,5	14,4	24,4	131,3	4,2	54,3
Plastics and plastic goods, rubber and rubber goods	17,1	19,8	18,7	12,1	1,6	2,4
Hides, leather, natural fur, harness and saddle products	12,2	14,3	16,0	18,4	6,2	1,4
Timber and timber products, charcoal, cork	0,4	0,8	0,7	0,8	0,2	0,1
Paper stuff from wooden pulp or other materials	2,4	4,7	4,9	7,1	1,1	1,5
Textile and textile products	77,4	96,7	122,3	132,9	30,6	17,3
Foot-wear, headgear, umbrellas, canes and whips	1,1	1,2	1,9	4,1	0,5	0,7
Products of stone, gyps, cement, asbestos, mica	46,2	43,8	54,8	43,3	8,3	0,7
Precious metals, pearls, precious stones	236,2	212,6	228,5	483,6	76,5	76,3
Non-precious metals and products from them	23,2	27,0	52,9	47,8	11,0	2,6
Machines, equipment and mechanisms	32,1	51,1	69,9	55,3	13,8	7,0
Terrestrial, air, marine transport and their parts	18,5	23,7	42,3	39,1	6,8	4,5
Optic devices and appliances, photography & cinematograph	1,1	0,8	3,7	1,5	0,3	—
Other special industrial products	13,7	4,6	0,3	2,7	0,3	—
Various industrial goods	2,8	3,5	5,0	5,2	1,3	1,0
Pieces of art, collection and antique goods	—	—	—	—	—	—

Notes:

1. NSC data at FOB prices
 2. Pre-2008 data excluding "shuttle traders" (adjustment) and after-estimates
 3. Post-2008 data including "shuttle traders" (adjustment)
- * including energy products

Table I.3: Structure of Export by the SITC sections
(in millions of US dollars)

Group of products	2005	2006	2007	2008	I.08	I.09
Total	672,0	794,1	1134,2	1642,1	268,0	235,1
Food products and live animals	56,6	90,5	139,3	158,4	26,1	21,1
Drinks and tobacco	18,6	12,8	16,3	19,8	4,0	4,7
Non-food raw products, excluding fuel	75,8	75,0	80,2	75,8	20,1	9,5
Mineral fuel, lubricants, and oils	78,8	148,9	279,7	420,1	64,3	37,2
Animal and vegetable oils, fats and wax	0,1	—	0,2	0,2	—	—
Chemical and similar products, not included in other categories	14,6	13,1	25,0	131,8	4,3	54,4
Industrial goods, classified by types of material	85,9	96,0	148,3	142,2	28,1	7,4
Machines and transportation equipment	51,2	74,5	112,2	94,4	20,6	11,5
Various finished products	59,7	77,3	108,2	135,9	26,6	13,7
Goods and transactions, not included in other SITC categories	230,7	206,0	224,8	463,5	73,9	75,7

Notes:

1. NSC data at FOB prices
2. Pre-2008 data excluding "shuttle traders" (adjustment) and after-estimates
3. Post-2008 data including "shuttle traders" (adjustment)

Table I.4: Structure of Import by the HS sections
(in millions of US dollars)

Group of products	2005	2006	2007	2008	I.08	I.09
Total	1101,3	1718,2	2417,0	4072,4	788,5	639,5
Live animals and animal products	11,9	22,9	40,7	59,7	13,2	13,4
Vegetable products	40,6	62,6	119,1	174,0	40,1	44,1
Fats and animal or vegetable oil	13,3	21,3	30,6	50,7	12,8	14,1
Food prod., strong & soft drinks & vinegar and tobacco	101,3	141,6	185,6	251,3	55,7	47,9
Mineral products*	334,0	527,4	781,4	1242,1	257,2	173,3
Products of chemistry and related industries	130,8	145,5	222,7	289,5	50,8	59,1
Plastics and plastic goods, rubber and rubber goods	60,1	85,2	104,8	108,0	20,7	17,1
Hides, leather, natural fur, harness and saddme products	3,0	2,0	2,8	6,5	1,0	1,2
Timber and timber products, charcoal, cork	21,6	28,6	54,4	70,7	13,8	11,3
Paper stuff from wooden pulp or other materials	24,0	33,0	41,8	48,8	10,0	12,8
Textile and textile products	36,6	51,0	47,9	260,8	39,4	37,8
Food-wear, headgear, umbrellas, fold. umbr-s and canes	5,2	7,7	8,7	66,4	10,3	9,7
Products of stone, gyps, cement, asbestos, mica	16,4	26,2	35,9	56,7	10,6	10,4
Precious metals, pearls, precious stones	2,0	3,4	1,5	9,0	0,3	1,1
Non-precious metals and products from them	66,5	104,9	177,7	233,4	45,9	40,0
Machines, equipment and mechanisms	156,1	271,9	343,7	456,7	76,2	71,1
Terrestrial, air, marine transport and their parts	41,4	136,6	144,2	627,0	117,7	60,3
Optic.devices and appliances, photography&cinematograph	22,3	25,7	34,0	24,4	5,2	7,8
Other special industrial products	0,8	0,6	1,7	0,8	0,1	0,3
Various industrial goods	13,3	20,1	37,6	36,0	7,3	6,5
Pieces of art, collection and antique goods	—	—	—	—	—	—

Notes:

1. NSC data at CIF prices

2. Pre-2008 data excluding "shuttle traders" (adjustment)

3. Post-2008 data including "shuttle traders" (adjustment)

* including energy products

Table I.5: Structure of Import by the SITC sections
(in millions of US dollars)

Group of products	2005	2006	2007	2008	I.08	I.09
Total	1101,3	1718,2	2417,0	4072,4	788,5	639,5
Food products and live animals	114,9	188,3	279,2	400,9	88,1	92,4
Drinks and tobacco	42,0	46,4	70,9	94,4	22,5	16,0
Non-food raw products, excluding fuel	36,3	46,2	74,9	88,3	18,4	8,3
Mineral fuel, lubricants, and oils	313,7	502,1	740,4	1197,7	248,9	170,4
Animal and vegetable oils, fats and wax	9,2	12,6	21,0	37,7	9,5	10,8
Chemical and similar products, not inc.in other categories	157,4	178,0	263,3	328,3	58,0	63,2
Industrial goods, classified by types of material	161,5	236,7	355,9	513,5	97,8	91,3
Machines and transportation equipment	199,5	407,9	490,0	1083,6	194,2	131,6
Various finished products	65,5	97,3	120,0	319,6	50,8	54,5
Goods and transactions, not included in other SITC categories	1,3	2,6	1,3	8,3	0,2	1,0

Notes:

1. NSC data at CIF prices
2. Pre-2008 data excluding "shuttle traders" (adjustment)
3. Post-2008 data including "shuttle traders" (adjustment)

Table I.6: Functional Structure of Export*(in millions of US dollars)*

	2005	2006	2007	2008	I.08	I.09
Total	672,0	794,1	1134,2	1642,1	1142,2	235,1
Consumption	121,0	168,1	249,6	311,9	241,4	34,3
Raw materials	52,0	59,3	88,9	187,3	116,0	65,6
Interim goods	400,6	382,0	461,3	687,0	449,9	93,6
Investment goods	19,6	35,8	54,8	36,1	25,1	4,4
Energy products	78,8	148,9	279,7	419,9	309,9	37,2

Notes:

1. In accordance with classification worked out at the NBKR on the basis of NSC export data in FOB prices
2. Pre-2008 data excluding "shuttle traders" (adjustment) and after-estimates
3. Post-2008 data including "shuttle traders" (adjustment)

Table I.7: Geographic Structure of Export
(in millions of US dollars)

	2005	2006	2007	2008	I.08	I.09
Total	672,0	794,1	1134,2	1642,1	268,0	235,1
CIS countries	303,3	378,9	567,1	781,1	126,9	81,4
Russia	134,4	153,8	234,6	316,5	52,2	26,9
Kazakhstan	116,1	162,6	204,6	184,1	36,3	15,8
Uzbekistan	17,1	27,9	85,7	232,5	28,5	33,3
Tadfikistan	22,9	23,9	28,1	27,3	6,0	3,1
Ukraine	6,0	4,1	6,1	6,1	0,3	0,7
Belarus	1,4	0,9	1,8	5,3	0,8	0,4
Other CIS counries	5,4	5,7	6,1	9,4	2,6	1,1
Non-CIS countries	368,7	415,1	567,1	861,1	141,2	153,7
Europe						
Switzerland	65,3	207,7	226,1	440,5	57,7	76,0
Latvia	4,2	2,0	16,5	44,2	3,6	0,2
Asia						
UAE	173,1	8,9	14,4	50,7	21,4	2,0
China	26,6	38,1	61,9	44,4	9,7	3,4
Afghanistan	12,4	74,8	118,4	48,0	24,8	3,8
Turkey	18,2	27,2	43,0	44,9	8,1	5,8
America						
Canada	22,5	0,2	0,8	0,9	—	—
Other non-CIS countries	46,5	56,2	86,1	187,6	15,9	62,6

Notes:

1. NSC data at FOB prices
2. Pre-2008 data excluding "shuttle traders" (adjustment) and after-estimates
3. Post-2008 data including "shuttle traiders" (adjustment)

Table I.8: Functional Structure of Import*(in millions of US dollars)*

	2005	2006	2007	2008	I.08	I.09
Total	1101,3	1718,2	2417,0	4072,4	788,5	639,5
Consumption	287,7	408,1	557,5	1369,1	275,5	204,5
Raw materials	43,3	58,6	135,2	194,4	41,1	45,1
Interim goods	308,1	406,9	587,2	784,4	138,3	142,5
Investment goods	148,6	342,5	396,7	526,8	84,6	77,0
Energy products	313,7	502,1	740,4	1197,8	248,9	170,4

Notes:

1. In according with classification worked out at the NBKR on the basis of NSC import data in CIF prices
2. Pre-2008 data excluding "shuttle traders" (adjustment)
3. Post-2008 data including "shuttle traders" (adjustment)

Table I.9: Geographic Structure of Import*(in millions of US dollars)*

	2005	2006	2007	2008	I.08	I.09
Total	1101,3	1718,2	2417,0	4072,4	788,5	639,5
CIS countries	679,6	991,0	1524,2	2186,9	448,4	356,7
Russia	378,9	652,2	978,8	1492,2	276,0	214,6
Kazakhstan	174,4	199,8	312,4	376,6	100,0	71,2
Uzbekistan	60,1	65,0	120,9	160,1	45,1	39,9
Ukraine	40,1	41,9	79,5	94,1	17,7	20,4
Belarus	7,1	18,7	23,8	42,5	7,1	7,5
Other CIS countries	19,0	13,4	8,9	21,4	2,5	3,2
Non-CIS countries	421,7	727,2	892,8	1885,6	340,0	282,8
Europe						
Germany	37,6	39,9	54,2	335,9	55,6	19,1
Netherlands	18,9	27,7	36,4	41,8	7,6	16,0
Asia						
Japan	11,7	13,3	17,9	130,4	34,0	15,2
Republic of Korea	27,8	29,1	39,1	83,2	13,2	14,4
China	102,9	246,7	355,6	728,2	114,2	124,9
Turkey	33,4	39,5	50,9	91,1	15,6	14,3
America						
USA	67,2	97,5	95,8	119,8	30,1	24,3
Canada	15,0	32,2	23,1	30,8	8,0	5,8
Other non-CIS countries	107,2	201,4	219,9	324,3	61,9	48,8

Notes:

1. NSC data at CIF prices
2. Pre-2008 data excluding "shuttle traders" (adjustment)
3. Post-2008 data including "shuttle traders" (adjustment)

Table I.10: Export of Major Types of Products

<i>Products</i>	<i>unit of measurement</i>	2007		2008	
		<i>in kind</i>	<i>millions of US dollars</i>	<i>in kind</i>	<i>millions of US dollars</i>
Total			1 134,2		1 642,1
Live animals	<i>thou pieces</i>	33,6	4,3	17,5	5,2
Milk and dairy products	<i>thou tons</i>	34,4	21,1	28,6	21,6
Oil and other fats received from milk	<i>tons</i>	295,9	1,2	334,9	2,1
Cheese and cottage cheese	<i>thou tons</i>	2,7	7,0	3,1	9,4
Products from grain and products from a flour or strach	<i>thou tons</i>	1,6	1,9	1,6	2,7
Vegetables fresh, frozen or tinned	<i>thou tons</i>	129,9	47,7	114,2	42,9
Fruit and nuts (except for olive nuts), fresh or dried	<i>thou tons</i>	66,0	27,1	127,5	47,1
Coffee, tea, cocoa and spicery	<i>thou tons</i>	3,6	3,3	4,1	4,2
Margarine and mixed fat	<i>thou tons</i>	6,0	9,0	7,0	10,6
Mineral water and soft drinks,sweetened with suger	<i>mln litres</i>	2,9	1,9	3,0	2,3
Raw tobacco and tobacco waste	<i>thou tons</i>	6,4	12,2	6,4	14,9
Tobacco	<i>thou tons</i>	0,4	1,1	0,4	1,1
Cotton	<i>thou tons</i>	33,0	29,3	23,7	23,8
Stone, sand and gravel	<i>thou tons</i>	1 113,3	3,5	1 042,9	3,8
Metal ores and iron-and-steel waste	<i>thou tons</i>	136,3	12,2	115,5	10,2
Ores and concentrates of precious metals	<i>thou tons</i>	7,8	4,7	4,7	3,5
Gasoline for motor vehicles	<i>thou tons</i>	55,8	29,4	54,2	37,9
Aviation kerosene	<i>thou tons</i>	170,0	106,6	215,7	213,1
Diesel fuel	<i>thou tons</i>	160,1	75,5	90,2	65,9
Electric current	<i>mil.kwh</i>	2 387,8	32,5	579,9	25,1
Other inorganic substances	<i>tons</i>	109,4	1,3	59,6	0,7
Cattle hides	<i>thou tons</i>	5,2	2,7	5,0	2,4
Rubber tire casing	<i>thou pieces</i>	35,9	2,7	37,5	4,7
Cardboards, paper boxes,boxes,bags	<i>thou tons</i>	3,2	3,8	3,4	5,1
Wrought artifical and textile cloth	<i>mln.sq.m</i>	2,2	0,4	7,0	2,7
Portland cement	<i>thou tons</i>	513,7	39,4	472,4	47,1
Rolling glass and glass with the ground surface	<i>mln.sq.m</i>	10,7	38,2	7,5	32,1
Hand and machine tools	<i>thou tons</i>	0,6	2,0	4,9	4,4
Small tools, safes and hardware	<i>tons</i>	205,0	0,3	680,5	0,7
Mechanical shovels, dredges and payloaders	<i>pieces</i>	14,0	1,2	14,0	0,7
Machines for sorting , screening soil, stones, ore		—	10,6	—	1,4
Other refrigerating and freezing equipment		—	0,4	—	1,4
Filament lamps	<i>mln. pieces</i>	159,8	20,0	132,4	21,1
Trucks and vehicles for special purposes	<i>pieces</i>	100,0	16,5	88,0	5,3
Other cars	<i>pieces</i>		3,7		6,7
Car components and accessories		—	14,6	—	19,8
Trailers and semitrailers, other transports		—	1,5	—	1,2
Support for matrasses, bed accessories		—	1,6	—	1,5
Clouthes and accessories		—	79,4	—	98,6
Nonmonetary gold	<i>tons</i>	9,9	224,7	17,6	463,5

Notes:

1. NSC data at FOB prices
2. Pre-2008 data excluding "shuttle traders" (adjustment) and after-estimates
3. Post-2008 data including "shuttle traiders" (adjustment)

I'08		I'09		unit of measurement	Products
<i>in kind</i>	<i>millions of US dollars</i>	<i>in kind</i>	<i>millions of US dollars</i>		
	268,0		235,1		Total
4,7	1,6	3,9	0,9	<i>thou pieces</i>	Live animals
7,2	5,3	4,0	3,6	<i>thou tons</i>	Milk and dairy products
94,5	0,6	59,7	0,4	<i>tons</i>	Oil and other fats received from milk
0,6	2,0	0,5	2,0	<i>thou tons</i>	Cheese and cottage cheese
0,4	0,6	0,3	0,4	<i>thou tons</i>	Products from grain and products from a flour or strach
17,1	5,4	17,6	7,6	<i>thou tons</i>	Vegetables fresh, frozen or tinned
4,8	4,1	5,2	2,9	<i>thou tons</i>	Fruit and nuts (except for olive nuts), fresh or dried
0,9	0,9	0,8	0,7	<i>thou tons</i>	Coffee, tea, cocoa and spicery
2,0	3,1	1,0	1,1	<i>thou tons</i>	Margarine and mixed fat
0,8	0,7	0,8	0,6	<i>mln litres</i>	Mineral water and soft drinks,sweetened with suger
1,4	2,9	1,2	3,5	<i>thou tons</i>	Raw tobacco and tobacco waste
0,1	0,2	0,1	0,3	<i>thou tons</i>	Tobacco
7,4	6,9	5,8	5,6	<i>thou tons</i>	Cotton
124,3	0,5	130,4	0,8	<i>thou tons</i>	Stone, sand and gravel
23,4	2,2	16,6	0,9	<i>thou tons</i>	Metal ores and iron-and-steel waste
—	—	816,2	0,7	<i>thou tons</i>	Ores and concentrates of precious metals
31,9	21,6	1,2	0,6	<i>thou tons</i>	Gasoline for motor vehicles
29,9	25,0	60,9	32,2	<i>thou tons</i>	Aviation kerosene
19,7	12,5	7,4	3,2	<i>thou tons</i>	Diesel fuel
58,5	1,1	26,0	0,7	<i>mil.kwh</i>	Electric current
34,0	0,4	50,0	1,3	<i>tons</i>	Other inorganic substances
0,8	0,4	0,7	0,4	<i>thou tons</i>	Cattle hides
6,9	0,5	1,5	1,4	<i>thou pieces</i>	Rubber tire casing
0,5	0,8	0,7	1,0	<i>thou tons</i>	Cardboards, paper boxes,boxes,bags
0,7	0,2	1,5	0,4	<i>mln.sq.m</i>	Wrought artifical and textile cloth
91,9	9,1	4,2	0,2	<i>thou tons</i>	Portland cement
2,0	7,0	0,1	0,3	<i>mln.sq.m</i>	Rolling glass and glass with the ground surface
715,3	1,1	514,7	0,4	<i>thou tons</i>	Hand and machine tools
88,2	0,2	835,3	0,6	<i>tons</i>	Small tools, safes and hardware
1,0	—	6,0	0,3	<i>pieces</i>	Mechanical shovels, dredges and payloaders
—	0,4	—	0,7		Machines for sorting , screening soil, stones, ore
—	0,1	—	0,4		Other refrigerating and freezing equipment
27,3	4,6	17,6	2,3	<i>mln. pieces</i>	Filament lamps
6,0	0,6	24,0	0,5	<i>pieces</i>	Trucks and vehicles for special purposes
—	0,5	—	0,6	<i>pieces</i>	Other cars
—	4,4	—	2,7		Car components and accessories
—	0,2	—	0,4		Trailers and semitrailers, other transports
—	0,4	—	0,4		Support for matrasses, bed accessories
—	21,1	—	10,6		Clouthes and accessories
2,6	73,9	2,6	75,7	<i>tons</i>	Nonmonetary gold

Table I.11: Import of Major Types of Products

<i>Products</i>	<i>unit of measurement</i>	2007		2008	
		<i>in kind</i>	<i>millions of US dollars</i>	<i>in kind</i>	<i>millions of US dollars</i>
Total			2 417,0		4 072,4
Meat and meat products	<i>thou tons</i>	33,7	22,5	50,6	36,2
Milk and dairy products, except for butter and cheese	<i>thou tons</i>	5,5	7,9	7,5	12,2
Cereals and cereals products	<i>thou tons</i>	358,8	69,9	304,0	86,3
Rice	<i>thou tons</i>	32,5	8,3	44,5	12,3
Flour wheaten and mangcorn	<i>thou tons</i>	65,3	15,3	111,0	47,1
Products from grain and products from flour or starch	<i>thou tons</i>	11,1	14,1	15,1	22,2
Fruit and nuts (except for olive nuts), fresh or dried	<i>thou tons</i>	70,3	12,1	61,5	14,8
Sugar, sugar-ware and honey	<i>thou tons</i>	84,2	34,8	72,4	37,7
Conditionery from suger	<i>thou tons</i>	9,3	7,3	9,7	11,4
Coffee, tea, cocoa, spicery	<i>thou tons</i>	20,2	37,1	21,9	52,5
Margarine and mixed fat	<i>thou tons</i>	9,5	9,5	11,5	13,2
The foodstuff which has been not included in other categories	<i>thou tons</i>	8,5	8,7	9,3	14,2
Mineral water and soft drinks	<i>mln litres</i>	25,8	13,6	42,2	24,9
The beer made of malt	<i>mln litres</i>	30,2	19,4	31,0	23,5
The cigarettes containing tobacco	<i>mil pieces</i>	3 492,3	27,7	3 177,0	30,8
Wood of coniferous breeds	<i>thou m³</i>	168,0	22,6	187,4	29,2
Coal, coke and briquets	<i>thou tons</i>	878,1	17,2	1 053,1	27,9
Motor petrol	<i>thou tons</i>	434,9	216,6	509,1	334,4
Aviation kerosene	<i>thou tons</i>	408,7	227,3	505,1	467,5
Diesel fuel	<i>thou tons</i>	289,1	140,5	194,2	141,4
Mazut	<i>thou tons</i>	43,7	10,6	41,7	11,0
Lubricant oil	<i>thou tons</i>	10,6	13,1	15,4	19,9
Natural gas	<i>mil.M³</i>	1 751,3	75,3	1 036,3	105,7
Vegetable oils and fats	<i>thou tons</i>	16,7	16,6	20,7	32,0
Pigments, paints, varnishes and similar materials	<i>thou tons</i>	34,3	16,7	37,2	20,3
Medicines (including veterinary medicines)	<i>thou tons</i>	4,7	74,1	4,5	89,4
Perfumery, cosmetic and toilet preparations	<i>thou tons</i>	27,7	34,7	27,6	44,3
Fertilizers	<i>thou tons</i>	152,1	22,2	85,2	25,4
Plastic in the primary form	<i>thou tons</i>	21,3	26,5	18,6	26,3
Plastic in the nonprime form	<i>thou tons</i>	7,9	14,3	10,4	15,2
Rubber tire covers	<i>thou pieces</i>	1 461,6	44,6	1 252,8	37,3
The condensed wood and restored wood	<i>thou m³</i>	49,5	14,9	62,1	17,7
Paper and cardboard	<i>thou tons</i>	20,3	18,7	21,7	22,6
Paper, cardboard and products from these materials	<i>thou tons</i>	1,9	6,2	2,6	9,3
Wrought artificial and textile cloth	<i>mln.sq.m</i>	81,8	20,5	243,3	76,3
Jiguline	<i>thou tons</i>	9,7	4,8	28,0	13,9
Cast iron and steel	<i>thou tons</i>	117,0	77,9	155,4	110,5
Products from pig-iron or not alloyed steel	<i>thou tons</i>	6,4	5,7	18,0	14,9
Small tools, safes and hardware	<i>thou tons</i>	4,2	3,0	11,4	6,0
Generator set	<i>pieces</i>	1 775,0	2,4	8 358,0	9,6
Bulldozers, bullgrater and power grader	<i>pieces</i>	58,0	6,5	66,0	9,5
Mechanical shovels, dredges and payloaders	<i>pieces</i>	196,0	14,6	328,0	21,5
Production processing tools unclassified under other categories		—	13,8	—	17,6
Industrial processing machines unclassified under other categories	<i>pieces</i>	534,0	3,8	581,0	7,3
Details of machines for sifting, crushing of a ground, a stone, ores		—	14,6	—	17,1
Electric linear telephone or cable devices	<i>thou pieces</i>	14,7	21,3	277,2	65,9
Electric communication equipment unclassified under other categories	<i>thou pieces</i>	0,4	1,5	8,4	4,7
Clothes and accessories		—	9,2	—	150,5
Footwear		—	8,2	—	63,7

Notes:

1. NSC data at CIF prices

2. Pre-2008 data excluding "shuttle traders" (adjustment)

3. Post-2008 data including "shuttle traders" (adjustment)

I'08		I'09		unit of measurement	Products
<i>in kind</i>	<i>millions of US dollars</i>	<i>in kind</i>	<i>millions of US dollars</i>		
	788,5		639,5		Total
9,7	6,5	10,7	7,6	<i>thou tons</i>	Meat and meat products
2,1	3,7	1,8	2,5	<i>thou tons</i>	Milk and dairy products, except for butter and cheese
76,2	21,8	95,8	20,2	<i>thou tons</i>	Cereals and cereals products
8,1	2,0	19,3	6,3	<i>thou tons</i>	Rice
24,1	8,0	21,7	8,0	<i>thou tons</i>	Flour wheaten and mangcorn
2,7	4,1	2,4	3,5	<i>thou tons</i>	Products from grain and products from flour or starch
28,3	4,5	13,6	5,6	<i>thou tons</i>	Fruit and nuts (except for olive nuts), fresh or dried
20,5	9,2	15,7	8,4	<i>thou tons</i>	Sugar, sugar-ware and honey
1,6	1,8	2,7	2,7	<i>thou tons</i>	Conditionery from sugar
4,5	11,0	5,2	10,6	<i>thou tons</i>	Coffee, tea, cocoa, spicery
3,1	3,5	3,6	3,5	<i>thou tons</i>	Margarine and mixed fat
2,1	3,2	1,8	3,3	<i>thou tons</i>	The foodstuff which has been not included in other categories
6,6	4,2	7,1	3,5	<i>mln litres</i>	Mineral water and soft drinks
4,6	3,3	6,3	3,9	<i>mln litres</i>	The beer made of malt
1 129,6	12,0	488,3	5,5	<i>mil pieces</i>	The cigarettes containing tobacco
34,2	5,3	29,1	4,5	<i>thou m³</i>	Wood of coniferous breeds
289,3	6,2	93,0	3,3	<i>thou tons</i>	Coal, coke and briquets
150,3	93,3	129,4	42,0	<i>thou tons</i>	Motor petrol
90,6	70,6	136,0	64,3	<i>thou tons</i>	Aviation kerosene
47,5	31,3	51,3	18,7	<i>thou tons</i>	Diesel fuel
11,0	3,1	25,1	2,3	<i>thou tons</i>	Mazut
2,6	3,6	3,4	4,3	<i>thou tons</i>	Lubricant oil
258,3	37,5	342,7	31,9	<i>mil.m³</i>	Natural gas
5,1	8,0	8,3	8,8	<i>thou tons</i>	Vegetable oils and fats
6,1	2,5	7,1	3,1	<i>thou tons</i>	Pigments, paints, varnishes and similar materials
0,7	23,0	1,0	14,1	<i>thou tons</i>	Medicines (including veterinary medicines)
6,4	8,8	6,2	11,0	<i>thou tons</i>	Perfumery, cosmetic and toilet preparations
9,5	2,0	14,7	3,6	<i>thou tons</i>	Fertilizers
3,1	4,1	3,0	3,2	<i>thou tons</i>	Plastic in the primary form
1,7	2,9	1,5	2,6	<i>thou tons</i>	Plastic in the nonprime form
298,5	8,6	244,2	5,9	<i>thou pieces</i>	Rubber tire covers
10,8	3,6	13,5	3,8	<i>thou m³</i>	The condensed wood and restored wood
4,9	5,1	4,4	4,4	<i>thou tons</i>	Paper and cardboard
0,6	1,9	0,6	2,3	<i>thou tons</i>	Paper, cardboard and products from these materials
40,1	13,4	35,7	11,5	<i>mln.sq.m</i>	Wrought artificial and textile cloth
3,8	2,1	6,2	3,7	<i>thou tons</i>	Jiguline
32,2	21,6	36,0	22,9	<i>thou tons</i>	Cast iron and steel
1,9	1,6	3,2	4,7	<i>thou tons</i>	Products from pig-iron or not alloyed steel
0,8	0,8	4,5	2,4	<i>thou tons</i>	Small tools, safes and hardware
220,0	0,9	793,0	3,3	<i>pieces</i>	Generator set
18,0	1,9	9,0	3,2	<i>pieces</i>	Bulldozers, bullgrater and power grader
61,0	3,0	53,0	2,3	<i>pieces</i>	Mechanical shovels, dredges and payloaders
—	2,2	—	4,1		Production processing tools unclassified under other categories
190,0	1,4	68,0	2,8	<i>pieces</i>	Industrial processing machines unclassified under other categories
—	5,6	—	3,0		Details of machines for sifting, crushing of a ground, a stone, ores
49,7	7,4	88,4	7,1	<i>thou pieces</i>	Electric linear telephone or cable devices
4,9	1,1	0,6	2,7	<i>thou pieces</i>	Electric communication equipment unclassified under other categories
—	20,3	—	20,5		Clothes and accessories
—	10,0	—	9,3		Footwear

Table I.12: Impact of Price and Quantity on the Volume of Export

<i>Products</i>	<i>1 q. 2009</i>	<i>1 q. 2009</i>	<i>1 q. 2008</i>	<i>Index of</i>		
	<i>mln. of US dollars</i>	<i>mln. of US dollars</i>	<i>mln. of US dollars</i>	<i>prices</i>	<i>physic. vol</i>	<i>value</i>
	<i>n309*p309</i>	<i>n309*p308</i>	<i>n308*p308</i>			
	A	B	C	A / B	B / C	A / C
Nonmonetary gold	75,7	75,7	73,9	0,999	1,025	1,024
Inorganic chemical agents	53,6	5,1	2,4	10,567	2,113	22,332
Oil, oil products	36,4	42,6	62,7	0,853	0,680	0,580
Vegetables and fruits	10,8	10,2	9,7	1,059	1,042	1,103
Cotton	5,6	5,4	6,9	1,030	0,792	0,816
Blouses, jackets & jacket-blouses	4,0	5,2	6,9	0,776	0,754	0,585
Milk and dairy products, except for butter and cheese	3,6	3,0	5,3	1,210	0,558	0,675
Raw tobacco and tobacco waste	3,5	2,6	2,9	1,381	0,893	1,233
Filament lamps	2,3	3,0	4,6	0,784	0,647	0,507
Cheese and cottage cheese	2,0	1,6	2,0	1,222	0,798	0,975
Rubber tire covers	1,4	0,1	0,5	13,313	0,223	2,971
Paper, cardboard and products from these materials	1,3	1,3	1,1	0,995	1,249	1,242
Pants, overalls and breeches for women and girls	1,2	2,2	3,0	0,562	0,717	0,403
Clothing	1,2	2,0	1,9	0,590	1,047	0,618
Margarine and mixed fat	1,1	1,6	3,1	0,700	0,522	0,365
Skirts and culottes	1,0	0,6	2,5	1,689	0,234	0,395
Metal ores and iron-and-steel waste	0,9	1,5	2,2	0,606	0,709	0,430
Live animals	0,9	1,3	1,6	0,704	0,828	0,583
Stone, sand and gravel	0,8	0,5	0,5	1,500	1,049	1,574
Coffee, tea, cocoa and spicery	0,7	0,8	0,9	0,975	0,811	0,790
Electric energy	0,7	0,5	1,1	1,483	0,444	0,659
Machines for sifting, crushing of a ground, a stone, ores	0,7	0,2	0,5	3,120	0,476	1,484
Mineral waters and the soft drinks sweetened with sugar	0,6	0,6	0,7	1,000	0,969	0,968
Pants, overalls and breeches for man and boys	0,6	1,2	2,1	0,545	0,556	0,303
Overcoat, short coat, cape, raincoat and other	0,6	1,0	0,7	0,634	1,330	0,844
Base metal products, not included in other categories	0,6	0,7	0,4	0,795	1,741	1,384
Other footwear with the textile upper part	0,5	0,5	0,3	1,003	1,583	1,587
Trucks and vehicles for special purposes	0,5	2,5	0,6	0,190	4,000	0,759
Food produce and preparation, not included in other categories	0,4	0,2	0,4	1,885	0,544	1,025
Wrought artificial and textile cloth	0,4	0,5	0,2	0,937	2,267	2,125
Products from grain and products from a flour or starch	0,4	0,5	0,6	0,914	0,720	0,659
Refrigerators, freezers	0,4	1,0	0,1	0,403	19,615	7,906
Hand and machine tools	0,4	0,8	1,1	0,521	0,720	0,375
Cattle hides	0,4	0,3	0,4	1,309	0,864	1,132
Oil and other fats received from milk	0,4	0,4	0,6	0,995	0,632	0,628
Jewels and their details made of precious metals	0,3	16,6	2,1	0,021	7,834	0,161
Suits and ensembles for women and girls	0,3	0,3	2,0	0,961	0,178	0,171
Tobacco	0,3	0,3	0,2	1,184	1,500	1,776
Mechanical shovels, dredges and payloaders	0,3	0,2	0,0	1,577	6,000	9,464
Rolling glass and glass with the ground surface	0,3	0,4	7,0	0,883	0,053	0,047
Sheepskin and lambs skin, without wool	0,3	0,2	0,3	1,404	0,867	1,217
Cattle hides or horsehides	0,3	0,6	3,4	0,524	0,173	0,091
Silver	0,3	0,4	0,5	0,752	0,832	0,626
Steam boiler and other steam generators	0,3	0,2	0,3	1,330	0,739	0,983
Coarse and fine flour, wheat and mangcorn flour	0,3	0,4	0,2	0,660	1,691	1,116
Full range of goods (mln. US\$)	219,0	196,8	220,4	1,11	0,89	0,99
Full range of goods (in % of total export)	93,1%		82,2%			
Total export	235,1		268,0			

Notes:

1. based on NSC data on exports of goods at FOB prices excluding after-estimates; first 46 large export items are indicated in the 1 quarter of 2009
n-physical volume of exports
p-estimate export price

Table I.13: Impact of Price and Quantity on the Volume of Import

<i>Products</i>	<i>1 q. 2009</i>	<i>1 q. 2009</i>	<i>1 q. 2008</i>	<i>Index of</i>		
	<i>mil US \$</i>	<i>mil US \$</i>	<i>mil US \$</i>	<i>prices</i>	<i>physic. vol</i>	<i>value</i>
	<i>n309*p309</i>	<i>n309*p308</i>	<i>n308*p308</i>			
	A	B	C	A / B	B / C	A / C
Oil, oil products	134,8	225,6	204,1	0,598	1,105	0,660
Natural gas	31,9	19,2	37,5	1,656	0,514	0,851
Cast iron and steel	22,9	24,1	21,6	0,947	1,117	1,058
Cereals and cereals products	20,2	27,5	21,8	0,735	1,258	0,925
Medicaments, including veterinary	14,1	32,3	23,0	0,437	1,405	0,613
Inorganic chemical agents	13,5	2,8	6,0	4,863	0,462	2,248
Wrought artificial and textile cloth	11,5	11,9	13,4	0,963	0,891	0,858
Sugar, sugar-ware, honey	11,2	9,2	11,0	1,217	0,833	1,013
Volatile oils, resinoids and perfumery	11,0	8,6	8,8	1,279	0,976	1,248
Coffee, tea, cocoa and spicery	10,6	12,7	11,0	0,835	1,153	0,963
Vegetable oils and fats	9,9	13,4	9,0	0,740	1,490	1,102
Paper, cardboard and products from these materials	8,3	8,9	8,8	0,934	1,012	0,945
Vegetables and fruits	8,1	4,1	7,8	1,969	0,528	1,039
Coarse and fine flour, wheat and mangcorn flour	8,0	7,2	8,0	1,103	0,897	0,989
Meat and meat products	7,6	7,2	6,5	1,061	1,097	1,164
Electric linear telephone or cable devices	7,1	13,2	7,4	0,540	1,778	0,960
Rice	6,3	4,8	2,0	1,304	2,375	3,098
Products from the ignoble metals, not included in other categories	6,0	9,0	5,0	0,660	1,821	1,203
Rubber tire covers	5,9	7,0	8,6	0,841	0,818	0,688
Alcoholic beverages	5,8	7,1	5,3	0,816	1,357	1,108
Footwear with the rubber or synthetic sole and upper parts	5,8	7,2	4,2	0,802	1,703	1,365
Trucks and vehicles for special purposes	5,6	5,3	12,0	1,049	0,445	0,467
Food produce and preparation, not included in other categories	5,1	3,1	4,2	1,609	0,745	1,199
Iron constructions and construction elements	4,7	2,7	1,6	1,741	1,669	2,906
Machines for sirting, crushing of a ground, a stone, ores	4,6	3,5	7,9	1,309	0,446	0,583
Wood of coniferous breeds	4,5	4,5	5,3	0,987	0,851	0,840
Compress wood and restore wood	3,8	4,4	3,6	0,857	1,243	1,065
Jiguline	3,7	3,4	2,1	1,089	1,638	1,783
Fertilizers	3,6	3,1	2,0	1,169	1,548	1,809
Mineral waters and the soft drinks	3,5	4,5	4,2	0,790	1,070	0,845
Margarine and mixed fat	3,5	4,0	3,5	0,879	1,138	1,000
Products from grain and products from a flour or starch	3,5	3,7	4,1	0,944	0,897	0,847
Generator set	3,3	3,2	0,9	1,057	3,605	3,810
Coal, coke and briquets	3,3	2,0	6,2	1,664	0,321	0,535
Plastic in the primary form	3,2	4,1	4,1	0,791	0,989	0,782
Bulldozers, bullgrater and power grader	3,2	0,9	1,9	3,392	0,500	1,696
Motior vehicles and carrier	3,1	2,4	7,7	1,274	0,320	0,407
Dye and tanning materials	3,1	3,0	2,5	1,036	1,167	1,209
Chemical, not included in other categories	3,0	6,5	1,3	0,457	5,208	2,379
Medicaments and pharmaceutical product	3,0	2,0	1,7	1,488	1,192	1,774
Food produce and preparation, not included in other categories	2,9	0,5	1,4	5,493	0,386	2,122
Electric equipment not included in other categories	2,8	2,3	2,5	1,193	0,930	1,110
Electric communication equipment unclassified under other categories	2,7	0,1	1,1	22,426	0,115	2,579
Plastic in the nonprime form	2,6	2,7	2,9	0,980	0,929	0,911
Milk and dairy products, except for oil and cheese	2,5	3,2	3,7	0,780	0,861	0,672
Mechanical shovels, dredges and payloaders	2,3	2,6	3,0	0,867	0,869	0,754
Household refrigerators and deep-freezers	2,2	2,8	1,4	0,767	2,034	1,561
Pants, overalls, breeches and shorts for women and girls	2,1	3,8	0,2	0,555	16,585	9,208
Full range of goods (mln. US\$)	451,8	547,6	523,9	0,825	1,045	0,862
Full range of goods (in % of total import)	70,6%		66,4%			
Total import	639,5		788,5			

Notes:

1. based on NSC data on imports at CIF prices excluding impotrtrts by "shuttke-traders": first 49 large import items are indicated in the 1 quarter of 2009

n-physical volume of exports

p-estimate export price

Table I.14: Export of Goods to Russia

	unit of measurement	2005		2006		2007		2008		Γ 08		Γ 09	
		in kind	mln. US \$	in kind	mln. US \$	in kind	mln. US \$	in kind	mln. US \$	in kind	mln. US \$	in kind	mln. US \$
Total			134,4		153,8		234,6		316,5		52,2		26,9
<i>Functional distribution*</i>													
Consumption			40,7		67,9		123,1		186,2		26,8		14,3
Raw materials			15,4		10,8		16,1		16,4		2,4		3,3
Interim goods			58,5		56,6		66,8		59,3		16,4		5,6
Investment goods			4,3		6,2		9,4		8,7		1,9		1,3
Energy products			15,5		12,3		19,2		45,9		4,7		2,4
<i>SITC sections and large positions</i>													
Food products and live animals			15,5		14,4		40,9		58,7		2,8		2,7
<i>Vegetables</i>	thou tons	23,9	2,8	34,3	4,7	57,9	12,8	71,8	16,3	9,3	1,5	6,5	1,7
<i>Fruit and nuts</i>	thou tons	14,7	2,0	26,0	4,5	60,1	18,5	120,5	35,8	3,0	0,7	3,4	0,8
Drinks and tobacco			8,0		5,9		8,1		5,5		1,7		1,5
<i>Raw tobacco and tobacco waste</i>	thou tons	6,2	8,0	4,2	5,8	4,3	8,0	2,4	5,1	0,9	1,6	0,4	1,4
Non-food raw products, excluding fuel			36,0		34,6		29,4		23,7		6,4		5,6
<i>Cotton fiber</i>	thou tons	44,6	33,9	40,2	30,9	27,4	23,7	19,9	19,1	6,8	6,2	5,0	4,6
Mineral fuel, lubricants, and oils			15,5		12,3		19,2		45,9		4,7		2,4
<i>Kerosene</i>	thou tons	16,0	9,3	17,2	12,2	17,5	12,7	23,5	27,1	4,5	4,3	2,7	2,4
Animal and vegetable oils, fats and wax			0,0		0,0		0,0		0,1		—		—
Chemical and similar products, not included in other categories			5,1		0,5		1,7		5,7		0,6		0,5
Industrial goods, classified by types of material			21,2		24,2		36,1		34,4		9,0		0,6
<i>Rolling glass and glass with the ground surface</i>	mil. sq. m	7,0	18,6	5,6	18,6	7,3	27,4	5,8	25,6	1,6	5,8	—	—
Machines and transportation equipment			10,4		13,6		22,4		24,1		4,0		2,1
<i>Filament lamps</i>	mln pieces	41,1	2,9	53,5	6,0	47,8	5,7	35,7	3,9	4,7	0,5	4,6	0,3
Various finished products			22,8		48,3		76,7		118,6		23,0		11,5
<i>Clouthes and accessories</i>			20,9		43,4		70,9		97,5		20,9		10,4
Goods and transactions, not included in other SITC categories			—		—		—		—		—		—

Notes:

1. NSC data at FOB prices

2. Pre-2008 data excluding "shuttle traders" (adjustment) and after-estimates

3. Post-2008 data including "shuttle traders" (adjustment)

* in accordance with classification worked out at the NBKR

Table I.15: Export of Goods to Kazakhstan

	<i>unit of measurement</i>	2005		2006		2007		2008		Γ 08		Γ 09	
		<i>in kind</i>	<i>mln. US \$</i>	<i>in kind</i>	<i>mln. US \$</i>	<i>in kind</i>	<i>mln. US \$</i>	<i>in kind</i>	<i>mln. US \$</i>	<i>in kind</i>	<i>mln. US \$</i>	<i>in kind</i>	<i>mln. US \$</i>
Total			116,1		162,6		204,6		184,1		36,3		15,8
Functional distribution*													
Consumption			52,3		70,5		86,5		71,9		18,5		11,7
Raw materials			2,0		2,4		10,5		2,2		0,7		0,3
Interim goods			41,6		47,7		70,6		71,1		13,3		1,6
Investment goods			7,3		17,6		10,5		10,5		2,6		1,5
Energy products			12,9		24,5		26,5		28,3		1,2		0,8
SITC sections and large positions													
Food products and live animals			22,6		38,4		45,4		49,1		13,1		8,0
<i>Milk and milky products, except for oil and cheese</i>	<i>thou tons</i>	20,6	9,4	37,0	15,8	33,5	20,0	28,4	21,3	7,2	5,3	4,0	3,6
<i>Cheese and curd</i>	<i>thou tons</i>	2,0	4,9	2,0	5,1	1,9	5,3	2,3	7,8	0,5	1,7	0,5	2,0
<i>Sugar, sugar-ware and honey</i>	<i>thou tons</i>	5,7	1,6	20,0	3,7	13,3	3,8	5,4	1,2	4,4	0,9	—	—
<i>Margarine and mixed fat</i>	<i>thou tons</i>	1,5	1,8	6,2	8,2	6,0	9,0	7,0	10,6	2,0	3,1	1,0	1,1
Drinks and tobacco			6,2		2,6		2,3		1,6		0,4		0,5
Non-food raw products, excluding fuel			1,0		0,3		0,3		0,5		0,0		0,2
Mineral fuel, lubricants, and oils			12,9		24,5		26,5		28,3		1,2		0,8
<i>Bitumen mixes on the basis of natural bitumen</i>	<i>thou tons</i>	—	—	6,9	3,0	14,0	6,9	2,5	1,6	—	—	—	—
<i>Electric energy</i>	<i>mil. kwh</i>	1 531,0	12,3	2 085,9	21,0	1 217,4	19,0	555,3	24,9	38,0	0,9	18,0	0,6
Animal and vegetable oils, fats and wax			—		—		0,1		—		—		—
Chemical and similar products, not included in other categories			1,5		2,0		10,1		2,3		0,7		0,2
Industrial goods, classified by types of material			39,9		46,5		73,3		72,2		13,3		2,2
<i>Cement, portland cement</i>	<i>thou tons</i>	364,2	12,9	523,9	21,2	512,4	39,0	469,8	46,8	91,6	9,1	4,1	0,2
<i>Slate</i>	<i>thou tons</i>	49,9	3,9	30,3	2,8	14,8	1,9	—	—	—	—	—	—
<i>Building brick</i>	<i>thou pieces</i>	16,4	1,6	27,5	3,1	26,5	3,7	3,2	0,4	0,9	0,1	0,5	0,1
<i>Rolling glass and glass with ground surface</i>	<i>mln.sq.m</i>	—	0,1	1,5	5,2	2,9	9,2	1,0	4,1	0,2	0,7	—	0,1
Machines and transportation equipment			15,1		24,7		19,0		19,3		4,8		2,4
<i>Working machines, equipment for specific sectors of industry</i>			0,4		4,7		1,2		2,4		0,6		0,0
<i>Machinery and equipments for civil construction and contract work</i>			3,9		0,6		0,9		0,2		0,0		0,4
<i>Electric filament lamp, their details</i>	<i>mln pieces</i>	39,4	3,4	39,2	3,4	38,3	4,7	27,6	4,7	6,0	1,1	2,7	0,4
<i>Cars not included in other categories</i>	<i>pieces</i>	165,0	0,9	469,0	1,1	493,0	1,3	162,0	0,6	51,0	0,2	26,0	0,2
Various finished products			17,0		23,6		27,6		10,9		2,9		1,6
<i>Clouthes and accessories</i>			0,6		3,3		7,8		0,2		0,1		—
<i>Goods for transportation and packing of plastic products</i>			12,3		15,5		14,0		4,6		0,6		0,8
Goods and transactions, not included in other SITC categories			—		—		—		—		—		—

Notes:

1. NSC data at FOB prices
2. Pre-2008 data excluding "shuttle traders" (adjustment) and after-estimates
3. Post-2008 data including "shuttle traders" (adjustment)

*in accordance with classification worked out at the NBKR

Table I.16: Export of Goods to Uzbekistan

	<i>unit of measurement</i>	2005		2006		2007		2008		Γ 08		Γ 09	
		<i>in kind</i>	<i>mln. US \$</i>	<i>in kind</i>	<i>mln. US \$</i>	<i>in kind</i>	<i>mln. US \$</i>	<i>in kind</i>	<i>mln. US \$</i>	<i>in kind</i>	<i>mln. US \$</i>	<i>in kind</i>	<i>mln. US \$</i>
Total			17,1		27,9		85,7		232,5		28,5		33,3
Functional distribution*													
Consumption			4,6		5,2		7,0		9,8		1,9		1,6
Raw materials			2,7		3,7		3,4		4,5		1,1		0,9
Interim goods			7,7		15,4		21,9		17,1		5,1		3,7
Investment goods			2,0		2,6		2,5		6,3		0,6		0,3
Energy products			0,2		1,0		51,0		194,9		19,8		26,9
SITC sections and large positions													
Food products and live animals			1,7		2,1		2,3		3,1		0,7		0,7
Drinks and tobacco			0,1		—		—		—		—		—
Non-food raw products, excluding fuel			5,1		6,9		8,3		7,8		1,8		1,1
<i>Stone, sand and gravel</i>	<i>thou tons</i>	<i>1 374,1</i>	<i>2,3</i>	<i>1 300,3</i>	<i>3,3</i>	<i>1 097,3</i>	<i>3,3</i>	<i>1 032,9</i>	<i>3,6</i>	<i>120,2</i>	<i>0,5</i>	<i>130,1</i>	<i>0,7</i>
<i>Metal ores and base scrap</i>	<i>thou tons</i>	<i>56,1</i>	<i>2,2</i>	<i>65,9</i>	<i>2,9</i>	<i>56,5</i>	<i>4,3</i>	<i>37,7</i>	<i>3,2</i>	<i>8,2</i>	<i>0,7</i>	<i>4,9</i>	<i>0,2</i>
Mineral fuel, lubricants, and oils			0,2		1,0		51,0		194,9		19,8		26,9
<i>Aviation kerosene</i>	<i>thou tons</i>	<i>0,3</i>	<i>0,2</i>	<i>0,5</i>	<i>0,4</i>	<i>51,6</i>	<i>29,4</i>	<i>150,6</i>	<i>140,4</i>	<i>16,0</i>	<i>12,0</i>	<i>54,0</i>	<i>26,1</i>
<i>Motor petrol</i>	<i>thou tons</i>	—	—	—	—	<i>14,2</i>	<i>8,8</i>	<i>20,9</i>	<i>15,2</i>	<i>7,6</i>	<i>5,2</i>	—	—
<i>Diesel oil</i>	<i>thou tons</i>	—	—	<i>0,6</i>	<i>0,3</i>	<i>1,9</i>	<i>0,9</i>	<i>14,1</i>	<i>11,4</i>	<i>3,3</i>	<i>2,6</i>	<i>1,8</i>	<i>0,8</i>
<i>Electric energy</i>	<i>mil. kwh</i>	—	—	—	—	<i>868,4</i>	<i>9,6</i>	—	—	—	—	—	—
Animal and vegetable oils, fats and wax			—		0,0		—		—		—		—
Chemical and similar products, not included in other categories			0,3		3,2		2,0		0,1		—		—
Industrial goods, classified by types of material			1,6		1,2		1,7		8,7		0,7		2,4
<i>Lime, cement and processing construction materials</i>			0,9		—		—		—		—		—
Machines and transportation equipment			8,2		13,3		20,3		17,6		5,4		2,1
<i>Machines for sorting and screening</i>			—		2,6		10,4		1,0		0,3		0,6
<i>Electric filament lamp, their details</i>	<i>mln pieces</i>	<i>30,6</i>	<i>2,9</i>	<i>30,6</i>	<i>2,9</i>	<i>35,2</i>	<i>4,7</i>	<i>35,8</i>	<i>6,6</i>	<i>6,6</i>	<i>1,2</i>	<i>4,9</i>	<i>0,8</i>
<i>Cars not included in other categories</i>	<i>pieces</i>	<i>60,0</i>	<i>0,9</i>	<i>82,0</i>	<i>0,2</i>	<i>107,0</i>	<i>0,1</i>	<i>20,0</i>	<i>0,1</i>	<i>5,0</i>	—	<i>2,0</i>	—
Various finished products			0,1		0,1		0,1		0,2		—		0,1
Goods and transactions, not included in other SITC categories			—		—		—		—		—		—

Notes:

1. NSC data at FOB prices

2. Pre-2008 data excluding "shuttle traders" (adjustment) and after-estimates

3. Post-2008 data including "shuttle traders" (adjustment)

*in accordance with classification worked out at the NBKR

Table I.17: Export of Goods to Belarus

	<i>unit of measurement</i>	2005		2006		2007		2008		Γ 08		Γ 09	
		<i>in kind</i>	<i>mln. US \$</i>	<i>in kind</i>	<i>mln. US \$</i>	<i>in kind</i>	<i>mln. US \$</i>	<i>in kind</i>	<i>mln. US \$</i>	<i>in kind</i>	<i>mln. US \$</i>	<i>in kind</i>	<i>mln. US \$</i>
Total			1,4		0,8		1,8		5,3		0,8		0,4
Functional distribution*													
Consumption			—		0,2		0,1		0,2		—		—
Raw materials			0,3		0,1		0,4		0,5		0,1		—
Interim goods			1,1		0,5		1,3		4,5		0,6		0,3
Investment goods			—		—		—		—		—		—
Energy products			—		—		—		—		—		—
SITC sections and large positions													
Food products and live animals			—		—		0,3		0,2		0,1		—
<i>Vegetables and fruits</i>	<i>thou tons</i>	—	—	—	—	0,4	0,3	0,2	0,2	0,1	0,1	—	—
Drinks and tobacco			0,1		—		—		—		—		—
Non-food raw products, excluding fuel			0,3		0,1		0,1		1,2		—		—
<i>Cotton fiber</i>	<i>thou tons</i>	0,1	0,1	—	—	—	—	0,8	1,0	—	—	—	—
Mineral fuel, lubricants and oils			—		—		—		—		—		—
Animal and vegetable oils, fats and wax			—		—		—		—		—		—
Chemical and similar products, not included in other categories			0,1		—		0,1		0,1		—		—
Industrial goods, classified by types of material			—		—		—		—		—		—
Machines and transportation equipment			0,8		0,7		1,3		3,6		0,6		0,3
<i>Swivel circuits and their elements</i>	<i>thou tons</i>	0,2	0,3	0,1	0,2	0,1	0,1	—	—	—	—	—	—
<i>Details and car accessories</i>	<i>thou tons</i>		0,3		—		0,8		3,2		0,5		0,2
Various finished products			—		—		—		0,1		—		—
Goods and transactions, not included in other SITC categories			—		—		—		—		—		—

Notes:

1. NSC data at FOB prices

2. Pre-2008 data excluding "shuttle traders" (adjustment) and after-estimates

3. Post-2008 data including "shuttle traders" (adjustment)

*in accordance with classification worked out at the NBKR

Table I.18: Export of Goods to Switzerland

	<i>unit of measurement</i>	2005		2006		2007		2008		Γ 08		Γ 09	
		<i>in kind</i>	<i>mln. US \$</i>	<i>in kind</i>	<i>mln. US \$</i>	<i>in kind</i>	<i>mln. US \$</i>	<i>in kind</i>	<i>mln. US \$</i>	<i>in kind</i>	<i>mln. US \$</i>	<i>in kind</i>	<i>mln. US \$</i>
Total			65,2		207,6		226,1		440,5		57,7		76,0
Functional distribution*													
Consumption			—		—		—		—		—		—
Raw materials			—		—		—		0,9		—		—
Interim goods			65,2		207,6		226,1		439,5		57,7		76,0
Investment goods			—		—		—		—		—		—
Energy products			—		—		—		—		—		—
SITC sections and large positions													
Food products and live animals			—		—		—		0,1		—		—
Drinks and tobacco			—		—		—		0,8		—		—
Non-food raw products, excluding fuel			0,2		—		0,2		—		—		—
Mineral fuel, lubricants, and oils			—		—		—		—		—		—
Animal and vegetable oils, fats and wax			—		—		—		—		—		—
Chemical and similar products, not included in other categories			—		—		—		—		—		—
Industrial goods, classified by types of material			0,9		1,6		1,1		3,0		0,4		0,3
<i>Silver</i>	<i>tons</i>		3,3		0,9		4,5		1,6		2,6		1,1
Machines and transportation equipment			—		0,1		0,1		—		—		—
Various finished products			—		0,1		—		0,1		—		—
Goods and transactions, not included in other SITC categories			64,1		205,9		224,7		436,5		57,3		75,7
<i>Nonmonetary gold</i>	<i>tons</i>		4,3		64,1		10,6		205,9		9,9		224,7
									16,6		436,5		2,0
											57,3		75,7
													2,6
													75,7

Notes:

1. NSC data at FOB prices

2. Pre-2008 data excluding "shuttle traders" (adjustment) and after-estimates

3. Post-2008 data including "shuttle traders" (adjustment)

*in accordance with classification worked out at the NBKR

Table I.19: Export of Goods to China

	unit of measurement	2005		2006		2007		2008		Γ 08		Γ 09	
		in kind	mln. US \$	in kind	mln. US \$	in kind	mln. US \$	in kind	mln. US \$	in kind	mln. US \$	in kind	mln. US \$
Total			26,6		38,1		61,9		44,4		9,7		3,4
Functional distribution*													
Consumption			0,4		0,4		0,7		1,3		0,1		0,3
Raw materials			10,1		16,2		18,8		22,8		6,4		0,9
Interim goods			14,7		13,3		13,8		11,6		1,7		1,4
Investment goods			0,2		3,7		21,6		1,5		0,1		0,4
Energy products			1,1		4,5		6,9		7,1		1,5		0,3
SITC sections and large positions													
Food products and live animals			0,2		0,3		0,4		1,0		0,1		0,2
Drinks and tobacco			—		0,1		—		—		—		—
Non-food raw products, excluding fuel			18,0		19,0		18,6		18,6		6,5		0,7
<i>Metal ores and scrap</i>	<i>thou tons</i>	<i>176,2</i>	<i>10,6</i>	<i>50,7</i>	<i>6,9</i>	<i>14,0</i>	<i>5,1</i>	<i>20,4</i>	<i>4,3</i>	<i>4,6</i>	<i>1,1</i>	<i>3,0</i>	<i>0,3</i>
<i>Cattle hides</i>	<i>thou tons</i>	<i>709,9</i>	<i>4,1</i>	<i>1 358,9</i>	<i>8,5</i>	<i>1 152,2</i>	<i>7,2</i>	<i>1 319,6</i>	<i>9,6</i>	<i>570,3</i>	<i>3,4</i>	<i>98,4</i>	<i>0,3</i>
<i>Sheepskin and lambs skin (except astrakhan)</i>	<i>thou pieces</i>	<i>140,7</i>	<i>0,3</i>	<i>543,6</i>	<i>0,6</i>	<i>2 372,8</i>	<i>2,8</i>	<i>1 180,7</i>	<i>1,3</i>	<i>658,3</i>	<i>0,8</i>	<i>33,0</i>	<i>—</i>
<i>Wool</i>	<i>thou tons</i>	<i>1,6</i>	<i>1,9</i>	<i>1,5</i>	<i>1,6</i>	<i>2,3</i>	<i>2,1</i>	<i>1,7</i>	<i>1,4</i>	<i>0,4</i>	<i>0,3</i>	<i>—</i>	<i>0,1</i>
Mineral fuel, lubricants, and oils			1,1		4,5		6,9		7,3		1,5		0,3
<i>Mazut</i>	<i>thou tons</i>	<i>3,1</i>	<i>0,3</i>	<i>13,0</i>	<i>1,6</i>	<i>19,2</i>	<i>3,3</i>	<i>9,8</i>	<i>3,6</i>	<i>2,0</i>	<i>0,6</i>	<i>—</i>	<i>—</i>
<i>Aviation kerosene</i>	<i>thou tons</i>	<i>1,1</i>	<i>0,6</i>	<i>4,0</i>	<i>2,8</i>	<i>4,8</i>	<i>3,4</i>	<i>2,9</i>	<i>3,2</i>	<i>0,9</i>	<i>0,9</i>	<i>0,4</i>	<i>0,3</i>
Animal and vegetable oils, fats and wa:			—		—		0,0		—		—		—
Chemical and similar products, not included in other categorie:			1,1		3,8		2,4		9,5		0,4		0,2
<i>Nonorganic chemicals</i>			0,5		2,1		2,3		5,0		0,2		—
<i>Chemical elements with addition of alloyng in other categories</i>		<i>1,6</i>	<i>0,6</i>	<i>7,5</i>	<i>1,5</i>	<i>0,1</i>	<i>—</i>	<i>12,7</i>	<i>4,4</i>	<i>0,6</i>	<i>0,2</i>	<i>1,0</i>	<i>0,2</i>
Industrial goods, classified by types of materia			4,9		6,1		10,4		5,9		1,1		0,7
<i>Leather</i>	<i>thou tons</i>	<i>7,5</i>	<i>2,7</i>	<i>5,8</i>	<i>2,5</i>	<i>6,6</i>	<i>3,3</i>	<i>14,3</i>	<i>3,6</i>	<i>1,3</i>	<i>0,8</i>	<i>0,9</i>	<i>0,5</i>
<i>Alluminium</i>	<i>thou tons</i>	<i>0,5</i>	<i>0,7</i>	<i>2,1</i>	<i>3,0</i>	<i>2,6</i>	<i>6,7</i>	<i>1,5</i>	<i>2,1</i>	<i>0,3</i>	<i>0,4</i>	<i>0,1</i>	<i>0,1</i>
Machines and transportation equipment			0,9		4,4		22,7		1,7		0,1		1,1
<i>Specific machinery</i>	<i>pieces</i>	<i>—</i>	<i>—</i>	<i>2,0</i>	<i>0,5</i>	<i>12,0</i>	<i>14,5</i>	<i>—</i>	<i>—</i>	<i>—</i>	<i>—</i>	<i>—</i>	<i>—</i>
<i>The cargo handling equipment</i>			—		—		4,8		0,1		—		—
Various finished products			0,3		0,1		0,3		0,3		—		—
Goods and transactions, not included in other SITC categorie:			—		—		—		—		—		—

Notes:

1. NSC data at FOB prices
2. Pre-2008 data excluding "shuttle traders" (adjustment) and after-estimates
3. Post-2008 data including "shuttle traders" (adjustment)

*in accordance with classification worked out at the NBKR

Table I.20: Export of Goods to Turkey

	<i>unit of measurement</i>	2005		2006		2007		2008		Γ 08		Γ 09	
		<i>in kind</i>	<i>mln. US \$</i>	<i>in kind</i>	<i>mln. US \$</i>	<i>in kind</i>	<i>mln. US \$</i>	<i>in kind</i>	<i>mln. US \$</i>	<i>in kind</i>	<i>mln. US \$</i>	<i>in kind</i>	<i>mln. US \$</i>
Total			18,2		27,2		43,0		44,9		8,1		5,8
Functional distribution*													
Consumption			3,8		4,1		7,8		13,2		2,3		0,5
Raw materials			7,9		14,4		19,8		11,5		2,8		3,7
Interim goods			0,8		3,1		6,6		2,9		0,6		0,4
Investment goods			0,3		0,2		0,2		0,3		—		—
Energy products			5,3		5,5		8,7		16,9		2,3		1,1
SITC sections and large positions													
Food products and live animals			8,9		17,2		27,3		23,5		4,8		4,1
<i>Legumes</i>	<i>thou tons</i>	12,2	5,2	27,0	12,8	36,0	18,8	16,5	11,2	4,0	2,7	5,6	3,7
<i>Nuts</i>	<i>thou tons</i>	0,7	1,1	1,0	1,9	2,5	4,9	3,3	5,6	1,1	1,7	0,1	0,2
Drinks and tobacco			—		—		—		—		—		—
Non-food raw products, excluding fuel			3,3		3,2		4,6		2,8		0,6		0,4
<i>Sheepskin and lambs skin, unmanufactured</i>	<i>thou pieces</i>	1 301,2	1,6	720,4	0,6	219,6	0,2	—	—	—	—	—	—
<i>Cattle hides</i>	<i>thou tons</i>	—	—	—	—	—	—	—	—	—	—	—	—
<i>Cotton</i>	<i>thou tons</i>	0,2	0,2	1,4	1,2	3,2	3,3	1,6	2,2	0,2	0,3	0,4	0,4
Mineral fuel, lubricants, and oils			5,3		5,5		8,7		16,9		2,3		1,1
<i>Aviation kerosene</i>	<i>thou tons</i>	9,1	5,3	8,0	5,5	12,4	8,7	15,1	16,9	2,5	2,3	1,3	1,1
Animal and vegetable oils, fats and wax			—		—		—		—		—		—
Chemical and similar products, not included in other categories			—		—		—		—		—		—
Industrial goods, classified by types of material			0,3		0,7		1,9		0,8		0,3		—
<i>Textile yarn</i>	<i>thou tons</i>	—	—	0,1	0,6	0,4	1,9	0,2	0,6	0,1	0,2	—	—
Machines and transportation equipment			0,3		0,5		0,2		0,3		—		—
Various finished products			—		0,1		0,1		0,5		—		—
Goods and transactions, not included in other SITC categories			—		—		—		—		—		—

Notes:

1. NSC data at FOB prices

2. Pre-2008 data excluding "shuttle traders" (adjustment) and after-estimates

3. Post-2008 data including "shuttle traders" (adjustment)

*in accordance with classification worked out at the NBKR

Table I.21: Export of Goods to the UAE

	<i>unit of measurement</i>	2005		2006		2007		2008		Γ 08		Γ 09	
		<i>in kind</i>	<i>mln. US \$</i>	<i>in kind</i>	<i>mln. US \$</i>	<i>in kind</i>	<i>mln. US \$</i>	<i>in kind</i>	<i>mln. US \$</i>	<i>in kind</i>	<i>mln. US \$</i>	<i>in kind</i>	<i>mln. US \$</i>
Total			173,0		8,9		14,4		50,7		21,4		2,0
Functional distribution*													
Consumption			0,7		1,1		1,1		1,6		0,3		0,4
Raw materials			—		—		—		—		—		—
Interim goods			168,0		—		0,1		27,4		16,8		0,1
Investment goods			0,1		1,1		0,1		2,5		—		0,1
Energy products			4,3		6,7		13,0		19,1		4,3		1,5
SITC sections and large positions													
Food products and live animals			0,2		0,4		0,5		1,4		0,3		0,3
Drinks and tobacco			—		—		0,1		0,1		—		—
Non-food raw products, excluding fuel			—		—		—		0,1		—		—
Mineral fuel, lubricants, and oils			4,3		6,7		13,0		19,1		4,3		1,5
<i>Aviation kerosene</i>	<i>thou tons</i>		7,2		4,2		9,8		6,7		18,3		13,0
Animal and vegetable oils, fats and wax			—		—		—		—		—		—
Chemical and similar products, not included in other categories			—		—		—		—		—		—
Industrial goods, classified by types of material			1,8		—		—		0,4		0,1		—
Machines and transportation equipment			0,1		1,1		0,1		2,6		—		0,1
Various finished products			0,6		0,7		0,6		0,2		0,1		—
Goods and transactions, not included in other SITC categories			166,1		—		—		26,9		16,6		—
<i>Nonmonetary gold</i>	<i>tons</i>		12,0		166,1		—		—		26,9		0,6
									1,0		26,9		0,6

Notes:

1. NSC data at FOB prices

2. Pre-2008 data excluding "shuttle traders" (adjustment) and after-estimates

3. Post-2008 data including "shuttle traders" (adjustment)

*in accordance with classification worked out at the NBKR

Table I.22: Export of Goods to Afghanistan

	<i>unit of measurement</i>	2005		2006		2007		2008		Γ 08		Γ 09	
		<i>in kind</i>	<i>mln. US \$</i>	<i>in kind</i>	<i>mln. US \$</i>	<i>in kind</i>	<i>mln. US \$</i>	<i>in kind</i>	<i>mln. US \$</i>	<i>in kind</i>	<i>mln. US \$</i>	<i>in kind</i>	<i>mln. US \$</i>
Total			12,4		74,7		118,4		48,0		24,8		3,8
<u>Functional distribution*</u>													
Consumption			0,7		0,6		1,0		0,5		—		0,3
Raw materials			—		—		—		0,1		—		0,1
Interim goods			1,5		1,0		2,1		1,8		0,3		0,1
Investment goods			1,0		0,7		0,9		0,9		0,1		0,2
Energy products			9,2		72,5		114,3		44,8		24,3		3,1
<u>SITC sections and large positions</u>													
Food products and live animals			0,3		0,4		0,9		0,6		—		0,4
Drinks and tobacco			0,2		0,2		—		—		—		—
Non-food raw products, excluding fuel			—		—		0,4		0,2		—		—
Mineral fuel, lubricants, and oils			9,2		72,5		114,3		44,8		24,3		3,1
<i>Motor petrol</i>	<i>thou tons</i>		5,3		2,1		45,8		21,9		37,7		18,5
<i>Aviation kerosene</i>	<i>thou tons</i>		2,0		1,0		53,9		30,5		46,8		26,3
<i>Diesel oil</i>	<i>thou tons</i>		15,4		5,9		42,9		19,9		145,6		67,5
Animal and vegetable oils, fats and wax			—		—		—		—		—		—
Chemical and similar products, not included in other categories			—		—		—		—		—		—
Industrial goods, classified by types of material			1,9		1,1		1,2		1,3		0,3		0,1
Machines and transportation equipment			0,7		0,6		1,5		1,2		0,1		0,3
Various finished products			—		—		—		—		—		—
Goods and transactions, not included in other SITC categories			—		—		—		—		—		—

Notes:

1. NSC data at FOB prices
2. Pre-2008 data excluding "shuttle traders" (adjustment) and after-estimates
3. Post-2008 data including "shuttle traders" (adjustment)

*in accordance with classification worked out at the NBKR

Table I.23: Import of Goods from Russia

	unit of measurement	2005		2006		2007		2008		F 08		F 09	
		in kind	mln. US \$	in kind	mln. US \$	in kind	mln. US \$	in kind	mln. US \$	in kind	mln. US \$	in kind	mln. US \$
Total			378,9		652,2		978,8		1 492,2		276,0		214,6
Functional distribution*													
Consumption			65,3		92,3		139,1		196,2		39,5		36,3
Raw materials			4,3		8,1		19,5		34,5		7,5		8,4
Interim goods			102,7		124,5		172,8		205,1		41,9		36,8
Investment goods			18,4		38,3		82,6		55,2		9,9		12,0
Energy products			188,2		388,9		564,7		1 001,2		177,2		121,1
SITC sections and large positions													
Food products and live animals			20,6		33,4		55,5		78,9		16,4		18,4
<i>Chocolate</i>	<i>thou tons</i>	2,7	4,5	3,7	8,5	6,9	19,9	6,1	26,8	1,4	5,9	1,3	4,9
<i>Sugar, sugar-ware and honey</i>	<i>thou tons</i>	3,9	2,2	4,2	3,0	3,0	2,2	1,4	1,8	0,1	0,3	0,1	0,3
<i>Margarine and mixed fat</i>	<i>thou tons</i>	2,7	2,7	6,6	6,6	4,9	5,6	3,2	5,2	0,9	1,4	0,9	1,2
Drinks and tobacco			12,3		14,6		21,8		35,9		5,5		6,2
<i>Beer</i>	<i>thou litres</i>	18,8	9,8	20,1	11,5	23,5	15,0	29,6	22,4	4,4	3,2	6,2	3,8
Non-food raw products, excluding fuel			14,2		16,1		36,1		39,3		7,2		5,8
<i>Wood of coniferous trees</i>	<i>thou cub m</i>	96,3	9,1	105,7	11,3	167,6	22,5	186,9	29,1	33,9	5,3	29,1	4,5
<i>Ores and concentrates of ignoble metals</i>	<i>thou tons</i>	0,1	—	1,6	1,1	6,1	5,3	1,1	0,9	0,7	0,5	—	—
Mineral fuel, lubricants, and oils			188,2		388,9		564,7		1 001,2		177,2		121,1
<i>Petroleum oils</i>	<i>thou tons</i>	—	—	8,8	2,2	78,1	26,4	149,6	71,0	—	—	4,1	1,6
<i>Gasoline for motor vehicles</i>	<i>thou tons</i>	217,4	83,9	297,2	130,9	400,4	201,0	476,5	314,7	127,3	79,8	123,6	40,7
<i>Diesel fuel</i>	<i>thou tons</i>	53,3	25,5	72,9	37,7	194,7	99,8	164,7	127,5	32,5	23,4	29,9	12,4
<i>Aviation kerosene</i>	<i>thou tons</i>	150,3	74,4	385,0	210,7	406,8	225,5	503,3	465,3	90,1	70,2	135,6	64,1
Animal and vegetable oils, fats and wax			0,9		1,9		7,0		19,5		5,0		4,9
<i>Vegetable oils and fats</i>	<i>thou tons</i>	0,9	0,8	2,3	1,9	6,0	6,9	10,9	19,5	2,7	5,0	4,7	4,9
Chemical and similar products, not included in other categories			42,9		51,1		66,6		75,4		14,6		13,6
<i>Nonorganic chemicals</i>			8,1		9,7		11,0		12,3		3,2		1,0
<i>Medicaments</i>			8,9		11,6		16,3		15,7		3,2		2,9
<i>Volatile oils, toiletry and cleansers</i>	<i>thou tons</i>	11,1	9,0	13,2	11,9	16,2	17,5	15,9	22,3	3,6	4,6	3,9	5,0
<i>Dye-tannin and stuffs</i>	<i>thou tons</i>	4,8	4,4	5,7	5,6	5,5	6,7	5,7	7,9	0,5	0,7	0,6	0,9
Industrial goods, classified by types of material			61,4		78,5		103,3		126,2		29,4		23,6
<i>Rubber tire casing</i>	<i>thou pieces</i>	319,3	12,0	311,1	16,0	304,7	20,4	196,2	16,9	41,7	4,7	43,8	2,6
<i>Multiplex and reconstructed wood</i>	<i>thou kub m</i>	14,3	3,3	17,3	4,4	24,7	7,3	35,6	8,2	5,5	1,5	8,8	2,2
<i>Cast iron and steel</i>	<i>thou tons</i>	29,2	17,0	34,5	21,1	35,9	26,9	40,3	39,8	12,7	10,0	18,6	9,8
Machines and transportation equipment			26,3		52,1		103,9		92,7		15,9		17,0
<i>Motior vehicles and carrier</i>	<i>pieces</i>	599,0	3,2	723,0	4,2	1 309,0	8,0	1 119,0	7,7	456,0	2,9	131,0	0,9
<i>Automobiles for transportation of cargoes</i>	<i>pieces</i>	126,0	1,1	120,0	3,1	243,0	8,0	271,0	7,2	43,0	0,9	9,0	0,2
<i>Agricultural machnes (except for tractors)</i>			0,7		0,9		10,3		0,3		0,1		—
<i>Cars not included in other categories</i>	<i>pieces</i>	181,0	0,7	59,0	0,9	87,0	2,0	1 670,0	8,5	264,0	1,0	59,0	0,2
Various finished products			12,1		15,0		19,4		23,1		4,7		3,9
<i>Block building, heating and lighting the equipment</i>			0,6		0,7		2,0		2,8		0,5		0,2
Goods and transactions, not included in other SITC categories			0,2		0,7		0,5		—		—		—

Notes:

1. NSC data at CIF prices

2. Pre-2008 data excluding "shuttle traders" (adjustment)

3. Post-2008 data including "shuttle traders" (adjustment)

*in accordance with classification worked out at the NBKR

Table I.24: Import of Goods from Kazakhstan

	unit of measurement	2005		2006		2007		2008		Γ 08		Γ 09	
		in kind	mln. US \$	in kind	mln. US \$	in kind	mln. US \$	in kind	mln. US \$	in kind	mln. US \$	in kind	mln. US \$
Total			174,4		199,8		312,4		376,6		100,0		71,2
<u>Functional distribution*</u>													
Consumption			48,5		68,9		85,0		121,1		29,9		22,0
Raw materials			28,0		39,0		93,8		126,4		26,3		31,3
Interim goods			25,2		34,8		44,6		56,5		11,3		6,0
Investment goods			3,5		3,1		3,8		4,8		1,9		0,4
Energy products			69,2		54,0		85,1		67,6		30,7		11,5
<u>SITC sections and large positions</u>													
Food products and live animals			43,0		62,6		107,1		157,1		34,7		31,8
<i>Sugar, sugar-ware and honey</i>	<i>thou tons</i>		35,2		13,5		42,6		20,9		24,8		12,6
<i>Other wheat and mangcorn non-milled</i>	<i>thou tons</i>		132,7		14,4		214,3		24,5		347,1		67,8
<i>Wheat flour and mangcorn</i>	<i>thou tons</i>		44,2		7,5		47,0		7,1		52,4		12,0
Drinks and tobacco			14,8		21,9		31,5		36,8		12,8		6,2
<i>Soft drinks</i>			2,9		4,3		6,6		14,2		1,8		2,0
<i>Cigarettes including tobacco</i>	<i>bil pieces</i>		1,1		9,3		1,7		15,0		2,2		20,2
Non-food raw products, excluding fuel			16,3		23,1		27,5		36,4		7,2		0,7
<i>Stone, sand and gravel</i>	<i>thou tons</i>		1 060,9		4,8		1 569,0		6,3		1 807,6		8,3
<i>Asbestos</i>	<i>thou tons</i>		17,4		5,1		23,5		6,1		14,3		3,3
<i>Metal ores and base scrap</i>	<i>thou tons</i>		1,0		1,1		4,8		6,2		5,3		10,6
Mineral fuel, lubricants, and oils			69,2		54,0		85,2		67,6		30,7		11,5
<i>Aviation kerosene</i>	<i>thou tons</i>		28,9		14,5		—		—		—		—
<i>Gasoline for motor vehicles</i>	<i>thou tons</i>		54,0		19,4		26,9		11,1		33,7		15,1
<i>Diesel fuel</i>	<i>thou tons</i>		39,5		14,3		60,2		22,0		92,7		40,0
<i>No-sintered coal</i>	<i>thou tons</i>		847,4		15,1		801,4		15,6		728,4		13,8
Animal and vegetable oils, fats and wax			5,1		6,2		7,3		4,6		1,5		1,3
<i>Vegetable oils and fats</i>	<i>thou tons</i>		5,8		4,5		6,2		5,3		5,8		5,7
Chemical and similar products, not included in other categories			4,6		9,6		19,5		38,6		3,7		14,7
<i>Nonorganic chemicals</i>			0,7		1,0		6,5		24,7		0,4		11,5
<i>Soap, detergents and polishwear</i>	<i>thou tons</i>		2,4		1,1		0,6		0,3		0,6		0,8
<i>Medicaments</i>	<i>thou tons</i>		0,1		0,6		0,2		2,2		0,2		3,1
<i>Pigments, paints, varnishes, etc.</i>	<i>thou tons</i>		4,7		1,0		14,1		3,1		22,5		4,9
Industrial goods, classified by types of material			16,0		15,9		26,0		26,5		7,0		3,7
<i>Alluminium</i>	<i>thou tons</i>		0,2		0,2		0,3		1,5		5,3		0,6
<i>Cast iron and steel</i>	<i>thou tons</i>		10,3		7,2		8,4		5,4		11,1		7,7
<i>Paper, carboard and paper products</i>			2,1		2,9		5,7		4,3		6,3		2,1
Machines and transportation equipment			4,3		4,8		5,3		6,3		2,5		0,3
Various finished products			1,0		1,7		3,0		2,5		0,3		0,6
Goods and transactions, not included in other SITC categories			—		—		—		0,1		—		0,1

Notes:

1. NSC data at CIF prices

2. Pre-2008 data excluding "shuttle traders" (adjustment)

3. Post-2008 data including "shuttle traders" (adjustment)

*in accordance with classification worked out at the NBKR

Table I.25: Import of Goods from Uzbekistan

	<i>unit of measurement</i>	2005		2006		2007		2008		Γ08		Γ09	
		<i>in kind</i>	<i>mln. US \$</i>	<i>in kind</i>	<i>mln. US \$</i>	<i>in kind</i>	<i>mln. US \$</i>	<i>in kind</i>	<i>mln. US \$</i>	<i>in kind</i>	<i>mln. US \$</i>	<i>in kind</i>	<i>mln. US \$</i>
Total			60,1		65,0		120,9		160,1		45,1		39,9
<u>Functional distribution*</u>													
Consumption			3,0		2,7		3,6		3,8		1,1		0,8
Raw materials			3,7		1,9		3,7		0,5		0,1		0,1
Interim goods			16,0		15,1		33,4		38,4		5,0		4,6
Investment goods			1,7		0,1		0,1		3,0		—		0,3
Energy products			35,8		45,2		80,1		114,3		38,9		34,1
<u>SITC sections and large positions</u>													
Food products and live animals			4,5		1,6		2,1		1,3		0,5		0,2
Drinks and tobacco			0,8		1,0		0,6		0,7		—		0,2
Non-food raw products, excluding fuel			0,4		0,4		1,2		1,1		0,1		0,1
Mineral fuel, lubricants, and oils			35,8		45,2		80,1		114,3		38,9		34,1
<i>Natural gas</i>	<i>mln kub m</i>		711,1		30,4		738,8		41,0		752,2		75,2
Animal and vegetable oils, fats and wax			0,3		0,8		1,7		—		—		—
Chemical and similar products, not included in other categories			9,5		8,3		20,4		21,8		1,7		1,8
<i>Fertilizers</i>	<i>thou tons</i>		71,6		9,0		63,8		7,7		141,3		19,5
Industrial goods, classified by types of material			7,1		6,8		13,3		15,9		3,0		2,1
<i>Portland cement, cement</i>	<i>thou tons</i>		99,9		4,2		93,9		5,3		126,3		10,3
Machines and transportation equipment			1,3		0,8		1,4		4,5		0,7		1,2
Various finished products			0,4		0,1		0,1		0,4		0,1		0,1
Goods and transactions, not included in other SITC categories			—		—		—		—		—		—

Notes:

1. NSC data at CIF prices

2. Pre-2008 data excluding "shuttle traders" (adjustment)

3. Post-2008 data including "shuttle traders" (adjustment)

*in accordance with classification worked out at the NBKR

Table I.26: Import of Goods from Belarus

	<i>unit of measurement</i>	2005		2006		2007		2008		F 08		F 09	
		<i>in kind</i>	<i>mln. US \$</i>	<i>in kind</i>	<i>mln. US \$</i>	<i>in kind</i>	<i>mln. US \$</i>	<i>in kind</i>	<i>mln. US \$</i>	<i>in kind</i>	<i>mln. US \$</i>	<i>in kind</i>	<i>mln. US \$</i>
Total			7,0		18,7		23,8		42,5		7,1		7,5
Functional distribution*													
Consumption			1,4		6,2		12,1		26,9		4,1		3,7
Raw materials			0,1		0,1		0,1		—		—		—
Interim goods			3,9		10,0		8,5		10,2		2,1		1,9
Investment goods			1,6		2,3		3,1		5,4		0,9		1,9
Energy products			—		—		—		—		—		—
SITC sections and large positions													
Food products and live animals			0,1		4,1		8,6		22,4		3,2		2,3
<i>Sugar white, refined and saccharose</i>	<i>thou tons</i>	—	—	7,0	4,0	17,0	7,8	34,7	18,7	5,9	3,0	4,1	2,1
Drinks and tobacco			—		—		—		0,1		—		—
Non-food raw products, excluding fuel			0,8		0,4		0,9		0,7		0,1		0,2
Mineral fuel, lubricants, and oils			—		—		—		—		—		—
Animal and vegetable oils, fats and wax			—		—		—		—		—		—
Chemical and similar products, not included in other categories			0,8		1,1		1,4		1,3		0,2		0,4
<i>Medicines, including veterinary</i>	<i>tons</i>	59,2	0,6	86,7	0,8	106,1	1,0	103,3	1,1	11,6	0,1	22,9	0,4
Industrial goods, classified by types of material			2,9		9,4		7,5		9,3		1,8		1,7
<i>Rubber tire covers</i>	<i>thou pieces</i>	12,1	1,1	10,4	7,2	5,5	3,4	4,4	4,2	1,9	0,9	0,1	1,1
<i>Multiplex and reconstructed wood</i>	<i>thou kub m</i>	0,1	—	2,4	0,5	5,1	1,1	6,2	1,6	0,7	0,2	0,4	0,1
Machines and transportation equipment			1,9		2,9		4,0		6,5		1,3		2,3
<i>Tractors</i>	<i>pieces</i>	13,0	0,1	13,0	0,2	71,0	1,3	99,0	1,9	26,0	0,5	113,0	1,6
<i>Machinery and equipment for civil construction</i>			0,1		0,1		0,1		0,3		—		—
<i>Cars</i>			0,7		0,4		0,2		1,8		0,1		0,3
Various finished products			0,4		0,8		1,4		2,3		0,6		0,6
Goods and transactions, not included in other SITC categories			—		—		—		—		—		—

Notes:

1. NSC data at CIF prices

2. Pre-2008 data excluding "shuttle traders" (adjustment)

3. Post-2008 data including "shuttle traders" (adjustment)

*in accordance with classification worked out at the NBKR

Table I.27: Import of Goods from Ukraine

	unit of measurement	2005		2006		2007		2008		Γ 08		Γ 09	
		in kind	mln. US \$	in kind	mln. US \$	in kind	mln. US \$	in kind	mln. US \$	in kind	mln. US \$	in kind	mln. US \$
Total			40,1		41,9		79,5		94,1		17,7		20,4
<u>Functional distribution*</u>													
Consumption			16,1		23,7		38,0		55,0		10,2		13,0
Raw materials			0,4		1,2		2,6		7,4		1,3		2,6
Interim goods			14,2		9,8		28,4		23,6		4,4		2,9
Investment goods			9,5		7,2		10,3		7,8		1,9		1,8
Energy products			—		—		0,2		0,3		0,1		0,1
<u>SITC sections and large positions</u>													
Food products and live animals			10,5		16,0		24,5		37,1		6,8		11,1
<i>Milk and milky products, except for oil and cheese</i>	<i>thou tons</i>		0,1		0,3		1,3		2,1		0,8		0,5
<i>Cereals and cereals products</i>	<i>thou tons</i>		1,7		2,4		4,0		4,9		1,1		1,5
<i>Fruit and vegetable juices</i>	<i>thou tons</i>		2,2		3,9		5,1		3,1		1,4		0,5
<i>Sugar white, refined</i>	<i>thou tons</i>		—		1,5		0,6		5,1		2,4		0,8
<i>Chocolate and the other foodstuff containing cocoa</i>	<i>thou tons</i>		3,7		5,3		4,1		6,2		4,8		7,7
Drinks and tobacco			1,3		2,2		5,3		7,0		1,7		0,6
<i>Soft drinks</i>			1,0		1,8		3,8		5,4		1,2		0,6
Non-food raw products, excluding fuel			—		—		—		0,1		—		—
Mineral fuel, lubricants, and oils			—		—		0,2		0,3		0,1		0,1
Animal and vegetable oils, fats and wax			0,3		1,0		1,7		6,2		1,2		2,5
<i>Vegetable oil and fats</i>	<i>thou tons</i>		0,5		1,5		1,0		1,8		1,7		4,0
Chemical and similar products, not included in other categories			2,6		3,6		6,6		6,8		1,1		1,0
<i>Medicaments</i>	<i>thou tons</i>		0,2		1,0		0,2		1,6		0,4		3,0
Industrial goods, classified by types of material			5,5		6,8		27,3		19,4		3,9		2,7
<i>Rubber tire covers</i>	<i>thou pieces</i>		14,3		0,5		31,3		0,8		32,4		5,0
<i>Cast iron and steel</i>	<i>thou tons</i>		2,6		2,0		4,4		3,1		23,3		16,2
Machines and transportation equipment			17,7		10,1		10,5		9,7		2,2		1,9
Various finished products			2,2		2,2		3,3		7,5		0,8		0,4
Goods and transactions, not included in other SITC categories			—		—		—		—		—		—

Notes:

1. NSC data at CIF prices

2. Pre-2008 data excluding "shuttle traders" (adjustment)

3. Post-2008 data including "shuttle traders" (adjustment)

*in accordance with classification worked out at the NBKR

Table I.28: Import of Goods from China

	unit of measurement	2005		2006		2007		2008		Γ08		Γ09	
		in kind	mln. US \$	in kind	mln. US \$	in kind	mln. US \$	in kind	mln. US \$	in kind	mln. US \$	in kind	mln. US \$
Total			102,9		246,7		355,6		728,2		114,2		124,9
Functional distribution*													
Consumption			30,1		77,3		98,2		299,1		53,3		53,4
Raw materials			1,9		1,4		2,7		4,9		0,4		0,5
Interim goods			40,9		72,1		121,3		228,3		32,6		44,0
Investment goods			29,4		94,3		131,6		194,8		27,8		26,7
Energy products			0,5		1,5		1,8		1,0		0,1		0,3
SITC sections and large positions													
Food products and live animals			9,2		29,1		32,9		40,7		9,6		13,6
<i>Rice</i>	<i>thou tons</i>	4,5	1,1	34,6	8,8	32,3	8,2	44,4	12,2	8,1	2,0	19,2	6,1
<i>Fruits and nuts</i>	<i>thou tons</i>	39,1	5,9	70,9	10,9	63,3	9,5	52,3	10,6	25,8	3,5	10,4	3,8
Drinks and tobacco			1,4		0,6		1,4		1,4		0,3		—
<i>Tobacco and tobacco waste</i>	<i>thou tons</i>	0,8	1,4	0,4	0,6	0,8	1,4	0,8	1,4	0,4	0,3	—	—
Non-food raw products, excluding fuel			0,8		0,6		1,0		1,6		0,2		0,3
Mineral fuel, lubricants, and oils			0,5		1,5		1,8		1,0		0,1		0,3
Animal and vegetable oils, fats and wax			0,1		0,1		0,1		0,8		0,2		0,1
Chemical and similar products, not included in other categories			10,6		16,2		25,0		29,6		4,5		6,0
<i>Nonorganic chemicals</i>			5,9		6,8		9,0		11,1		0,3		0,5
<i>Non-primary form plastic</i>	<i>thou tons</i>	1,0	0,6	2,3	2,1	2,7	1,8	5,5	3,8	0,8	0,6	0,9	1,2
Industrial goods, classified by types of material			32,7		69,3		115,1		230,2		36,8		40,1
<i>Fabrics from artificial textile materials</i>	<i>mil. kw m</i>	81,0	12,7	74,6	18,8	78,3	19,6	237,5	72,9	39,2	12,8	34,4	11,0
<i>Glazed ceramic tiles</i>	<i>thou kw m</i>	1 298,5	3,0	2 063,6	4,5	1 794,3	5,6	2 414,0	7,8	419,4	1,5	193,6	0,7
<i>Instrument hand-driven and machine</i>	<i>thou tons</i>	20,3	2,8	38,9	12,2	67,1	22,4	55,6	20,0	15,1	5,5	0,5	0,6
Machines and transportation equipment			29,3		92,1		128,2		204,2		30,0		29,8
<i>Machinery and equipment for civil construction</i>	<i>pieces</i>	53,0	1,0	93,0	2,0	205,0	10,0	878,0	22,0	60,0	2,3	61,0	3,2
<i>Other machinery for food processing</i>			0,2		1,1		1,4		1,9		0,3		0,2
<i>Machinery for automatic processing</i>	<i>thou pieces</i>	85,4	2,2	89,7	4,0	114,9	4,1	92,2	2,5	34,4	0,6	22,0	0,4
<i>Equipment for electric communication</i>			11,8		44,9		48,8		50,1		8,6		5,8
<i>Automob. for transport. of cargoes and for specific purposes</i>	<i>pieces</i>	66,0	1,3	132,0	2,9	304,0	10,2	738,0	23,2	153,0	4,9	40,0	1,2
Various finished products			18,3		37,1		50,1		216,8		32,5		34,9
<i>Furniture and components</i>			1,5		5,0		12,4		11,0		2,6		1,6
<i>Clothes and accessories</i>			4,4		9,0		6,5		118,0		16,0		16,2
<i>Footwear</i>			3,0		5,2		5,3		55,0		8,5		6,8
Goods and transactions, not included in other SITC categories			—		—		—		1,8		—		—

Notes:

1. NSC data at CIF prices

2. Pre-2008 data excluding "shuttle traders" (adjustment)

3. Post-2008 data including "shuttle traders" (adjustment)

*in accordance with classification worked out at the NBKR

Table I.29: Import of Goods from USA

	<i>unit of measurement</i>	2005		2006		2007		2008		Γ 08		Γ 09	
		<i>in kind</i>	<i>mln. US \$</i>	<i>in kind</i>	<i>mln. US \$</i>	<i>in kind</i>	<i>mln. US \$</i>	<i>in kind</i>	<i>mln. US \$</i>	<i>in kind</i>	<i>mln. US \$</i>	<i>in kind</i>	<i>mln. US \$</i>
Total			67,2		97,5		95,7		119,8		30,1		24,3
<u>Functional distribution*</u>													
Consumption			43,3		24,1		43,4		75,7		23,3		11,2
Raw materials			0,5		0,5		—		0,8		—		0,3
Interim goods			4,5		10,5		14,3		14,3		2,2		3,9
Investment goods			18,9		62,3		37,8		28,5		4,5		8,8
Energy products			—		0,2		0,3		0,3		—		0,1
<u>SITC sections and large positions</u>													
Food products and live animals			6,5		5,0		11,7		22,5		5,1		5,9
<i>Meat and meat foods</i>	<i>thou tons</i>	<i>10,9</i>	<i>5,6</i>	<i>8,1</i>	<i>4,4</i>	<i>17,6</i>	<i>9,8</i>	<i>32,4</i>	<i>20,6</i>	<i>7,0</i>	<i>4,1</i>	<i>7,2</i>	<i>4,7</i>
Drinks and tobacco			—		—		0,1		0,1		—		—
Non-food raw products, excluding fuel			2,0		1,7		1,7		2,2		0,6		0,4
<i>Second hand clothes</i>	<i>thou tons</i>	<i>0,3</i>	<i>2,0</i>	<i>0,4</i>	<i>1,6</i>	<i>0,3</i>	<i>1,7</i>	<i>2,1</i>	<i>2,1</i>	<i>0,1</i>	<i>0,6</i>	<i>0,1</i>	<i>0,4</i>
Mineral fuel, lubricants, and oils			—		0,2		0,3		0,3		—		0,1
Animal and vegetable oils, fats and wax			0,5		0,4		—		—		—		0,3
Chemical and similar products, not included in other categories			31,7		13,5		26,5		30,9		12,4		0,5
<i>Medicaments, including veterinary</i>	<i>tons</i>	<i>81,8</i>	<i>21,8</i>	<i>27,1</i>	<i>11,2</i>	<i>29,9</i>	<i>22,3</i>	<i>32,1</i>	<i>26,5</i>	<i>18,0</i>	<i>11,7</i>	<i>1,4</i>	<i>0,1</i>
Industrial goods, classified by types of material			1,5		1,6		4,0		3,1		0,3		0,5
Machines and transportation equipment			20,6		57,3		37,0		54,1		10,4		12,4
<i>Machinery and equipment for civil construction</i>			<i>5,4</i>		<i>7,3</i>		<i>3,3</i>		<i>1,8</i>		—		<i>2,4</i>
<i>Equipment for electric communication</i>			<i>3,7</i>		<i>12,7</i>		<i>6,1</i>		<i>3,5</i>		<i>2,6</i>		<i>2,3</i>
<i>Cars</i>	<i>pieces</i>	<i>2,0</i>	—	<i>7,0</i>	<i>0,1</i>	<i>2,0</i>	<i>0,0</i>	<i>60,0</i>	<i>2,2</i>	<i>13,0</i>	<i>0,6</i>	<i>3,0</i>	<i>0,1</i>
<i>Automob. for transport. of cargoes</i>	<i>pieces</i>	<i>10,0</i>	<i>2,1</i>	<i>21,0</i>	<i>28,8</i>	<i>6,0</i>	<i>11,1</i>	<i>2,0</i>	<i>4,2</i>	—	—	—	—
<i>Cars, not included in other categories</i>	<i>pieces</i>	<i>94,0</i>	<i>0,8</i>	<i>41,0</i>	<i>0,3</i>	<i>131,0</i>	<i>0,4</i>	<i>1 634,0</i>	<i>18,4</i>	<i>487,0</i>	<i>4,8</i>	<i>95,0</i>	<i>1,1</i>
Various finished products			4,4		17,8		14,5		6,5		1,2		1,2
<i>Clothes and accessories</i>			<i>1,3</i>		<i>2,8</i>		<i>0,6</i>		<i>1,3</i>		<i>0,3</i>		<i>0,2</i>
<i>Special, scientific, control instruments and devices</i>			<i>2,0</i>		<i>13,3</i>		<i>11,2</i>		<i>2,9</i>		<i>0,6</i>		<i>0,6</i>
Goods and transactions, not included in other SITC categories			—		—		—		—		—		—

Notes:

1. NSC data at CIF prices

2. Pre-2008 data excluding "shuttle traders" (adjustment)

3. Post-2008 data including "shuttle traders" (adjustment)

*in accordance with classification worked out at the NBKR

Table I.30: Import of Goods from Germany

	<i>unit of measurement</i>	2005		2006		2007		2008		Γ 08		Γ 09	
		<i>in kind</i>	<i>mln. US \$</i>	<i>in kind</i>	<i>mln. US \$</i>	<i>in kind</i>	<i>mln. US \$</i>	<i>in kind</i>	<i>mln. US \$</i>	<i>in kind</i>	<i>mln. US \$</i>	<i>in kind</i>	<i>mln. US \$</i>
Total			37,6		39,9		54,2		335,9		55,6		19,1
Functional distribution*													
Consumption			7,7		9,6		9,9		265,9		40,9		9,1
Raw materials			0,5		2,1		4,1		8,9		1,8		0,1
Interim goods			10,8		16,4		15,3		22,1		5,4		2,8
Investment goods			16,4		11,0		23,6		37,6		7,2		6,6
Energy products			2,2		0,8		1,2		1,4		0,4		0,5
SITC sections and large positions													
Food products and live animals			0,5		0,5		0,7		0,7		0,3		0,2
Drinks and tobacco			0,4		0,5		0,3		0,8		0,1		0,1
Non-food raw products, excluding fuel			0,2		0,5		0,3		0,4		—		—
Mineral fuel, lubricants, and oils			2,2		0,8		1,2		1,4		0,4		0,5
<i>Petroleum oil and petroleum products (except raw)</i>	<i>thou tons</i>		3,0		0,7		0,8		1,2		0,3		0,3
Animal and vegetable oils, fats and wax			—		—		—		—		—		—
Chemical and similar products, not included in other categories			6,5		10,1		14,0		21,6		3,3		3,3
<i>Silicon</i>	<i>tons</i>		—		9,2		1,5		17,9		3,8		37,3
<i>Perfumery, cosmetics and toiletry</i>	<i>thou tons</i>		0,2		1,8		0,2		2,1		0,1		1,8
<i>Medicaments, including veterinary</i>	<i>tons</i>		38,8		1,2		64,9		2,2		83,3		2,9
Industrial goods, classified by types of material			4,3		5,9		7,3		10,0		1,4		1,3
<i>Paper and cardboard</i>	<i>thou tons</i>		0,2		0,7		0,2		0,8		0,2		0,3
<i>Rubber tire covers</i>	<i>thou pieces</i>		329,6		1,3		375,7		2,0		548,7		3,5
<i>Base metal products</i>			0,4		0,4		0,8		0,8		1,7		1,7
Machines and transportation equipment			18,1		18,0		27,2		295,0		48,8		13,0
<i>Printed and stitching machines</i>			2,9		0,7		3,6		2,0		1,1		0,1
<i>Pumps liquid lifts</i>			0,1		0,2		1,6		2,8		2,3		0,3
<i>Cars, not included in other categories</i>	<i>thou pieces</i>		1,7		2,5		0,1		0,7		0,6		1,8
<i>Electro diagnostic tools and devices</i>			1,0		0,2		0,7		48,6		262,8		8,9
<i>Other machines for treatment food products and it's details</i>			1,7		0,4		1,9		0,2		0,2		0,2
Various finished products			5,4		3,6		3,0		6,1		1,2		0,6
<i>Special, scientific, control instruments and devices</i>			4,2		1,1		1,2		1,6		0,3		0,4
Goods and transactions, not included in other SITC categories			—		—		—		—		—		—

Notes:

1. NSC data at CIF prices

2. Pre-2008 data excluding "shuttle traders" (adjustment)

3. Post-2008 data including "shuttle traders" (adjustment)

*in accordance with classification worked out at the NBKR

Table I.31: Import of Goods from Turkey

	<i>unit of measurement</i>	2005		2006		2007		2008		Γ 08		Γ 09	
		<i>in kind</i>	<i>mln. US \$</i>	<i>in kind</i>	<i>mln. US \$</i>	<i>in kind</i>	<i>mln. US \$</i>	<i>in kind</i>	<i>mln. US \$</i>	<i>in kind</i>	<i>mln. US \$</i>	<i>in kind</i>	<i>mln. US \$</i>
Total			33,4		39,5		50,9		91,1		15,6		14,3
Functional distribution*													
Consumption			12,0		15,7		21,4		46,7		7,9		10,3
Raw materials			0,6		0,5		0,7		0,8		0,1		0,1
Interim goods			11,5		12,4		14,7		26,4		4,8		2,9
Investment goods			9,2		10,6		14,0		17,0		2,8		0,9
Energy products			0,2		0,2		0,1		0,1		—		—
SITC sections and large positions													
Food products and live animals			2,4		3,4		6,3		7,5		1,7		1,7
<i>Coffee, tea, cocoa, spices</i>	<i>thou tons</i>	<i>0,8</i>	<i>0,6</i>	<i>1,1</i>	<i>1,1</i>	<i>2,5</i>	<i>2,1</i>	<i>3,8</i>	<i>2,5</i>	<i>0,7</i>	<i>0,6</i>	<i>1,0</i>	<i>0,6</i>
<i>Sugar, sugar-ware and honey</i>	<i>thou tons</i>	<i>1,4</i>	<i>0,6</i>	<i>1,3</i>	<i>0,8</i>	<i>5,0</i>	<i>1,8</i>	<i>3,7</i>	<i>1,8</i>	<i>0,8</i>	<i>0,4</i>	<i>0,5</i>	<i>0,2</i>
<i>Cereals and cereals products</i>	<i>thou tons</i>	<i>1,3</i>	<i>0,4</i>	<i>0,8</i>	<i>0,4</i>	<i>1,4</i>	<i>0,7</i>	<i>2,0</i>	<i>1,0</i>	<i>0,5</i>	<i>0,3</i>	<i>0,3</i>	<i>0,2</i>
Drinks and tobacco			—		—		—		0,2		—		—
Non-food raw products, excluding fuel			0,3		0,2		0,4		0,2		0,1		—
Mineral fuel, lubricants, and oils			0,2		0,2		0,1		0,1		—		—
Animal and vegetable oils, fats and wax			0,3		0,2		0,3		0,5		0,1		0,5
Chemical and similar products, not included in other categories			4,7		6,4		7,3		11,6		1,5		2,9
<i>Soap, detergent and polishwear</i>	<i>thou tons</i>	<i>1,9</i>	<i>0,9</i>	<i>1,9</i>	<i>1,4</i>	<i>2,1</i>	<i>1,7</i>	<i>2,1</i>	<i>2,3</i>	<i>0,3</i>	<i>0,3</i>	<i>0,4</i>	<i>0,7</i>
<i>Non-primary plastic</i>	<i>thou tons</i>	<i>1,5</i>	<i>2,2</i>	<i>1,7</i>	<i>1,8</i>	<i>2,5</i>	<i>2,5</i>	<i>3,1</i>	<i>3,2</i>	<i>0,5</i>	<i>0,5</i>	<i>0,3</i>	<i>0,4</i>
<i>Chemical and similar products, not included in other categories</i>			<i>0,4</i>		<i>0,4</i>		<i>0,4</i>		<i>0,4</i>		<i>0,1</i>		—
Industrial goods, classified by types of material			7,5		7,7		11,3		16,1		3,1		3,0
<i>Metal products not included in other categories</i>			<i>1,4</i>		<i>1,7</i>		<i>2,9</i>		<i>2,4</i>		<i>0,5</i>		<i>0,4</i>
<i>Floor carpering</i>	<i>mil.kw m</i>	<i>2,4</i>	<i>1,3</i>	<i>3,7</i>	<i>1,7</i>	<i>5,2</i>	<i>2,4</i>	<i>8,1</i>	<i>4,5</i>	<i>1,4</i>	<i>0,6</i>	<i>1,3</i>	<i>1,0</i>
<i>Paper, cardboard and paper products</i>			<i>1,4</i>		<i>1,1</i>		<i>1,5</i>		<i>1,4</i>		<i>0,3</i>		<i>0,3</i>
Machines and transportation equipment			11,2		15,0		19,7		24,8		4,9		2,1
<i>Machinery desined for specific sectors</i>			<i>4,1</i>		<i>6,5</i>		<i>7,9</i>		<i>9,5</i>		<i>1,0</i>		<i>0,5</i>
<i>Electric machines, devices, sets and their details</i>			<i>2,1</i>		<i>3,6</i>		<i>4,9</i>		<i>6,6</i>		<i>2,4</i>		<i>0,9</i>
Various finished products			6,7		6,4		5,4		24,0		4,0		4,1
<i>Furniture and it's detail, beddings</i>			<i>0,9</i>		<i>1,1</i>		<i>1,4</i>		<i>1,4</i>		<i>0,1</i>		<i>0,2</i>
<i>Clothes and accessories</i>			<i>1,6</i>		<i>1,8</i>		<i>0,6</i>		<i>16,3</i>		<i>2,5</i>		<i>2,5</i>
<i>Plastic products not included in other categories</i>			<i>1,0</i>		<i>1,7</i>		<i>1,4</i>		<i>1,8</i>		<i>0,4</i>		<i>0,2</i>
Goods and transactions, not included in other SITC categories			—		—		—		6,1		0,2		—

Notes:

1. NSC data at CIF prices

2. Pre-2008 data excluding "shuttle traders" (adjustment)

3. Post-2008 data including "shuttle traders" (adjustment)

*in accordance with classification worked out at the NBKR

Table I.32: Import of Goods from Japan

	<i>unit of measurement</i>	2005		2006		2007		2008		Γ 08		Γ 09	
		<i>in kind</i>	<i>mln. US \$</i>	<i>in kind</i>	<i>mln. US \$</i>	<i>in kind</i>	<i>mln. US \$</i>	<i>in kind</i>	<i>mln. US \$</i>	<i>in kind</i>	<i>mln. US \$</i>	<i>in kind</i>	<i>mln. US \$</i>
Total			11,7		13,3		17,9		130,4		34,0		15,2
<u>Functional distribution*</u>													
Consumption			2,5		4,7		8,1		111,7		31,1		12,2
Raw materials			—		—		—		—		—		—
Interim goods			1,7		2,9		3,5		3,6		0,5		0,7
Investment goods			7,5		5,8		6,3		15,1		2,4		2,3
Energy products			—		—		—		—		—		—
<u>SITC sections and large positions</u>													
Food products and live animals			—		—		—		—		—		—
Drinks and tobacco			—		—		—		—		—		—
Non-food raw products, excluding fuel			—		—		—		—		—		—
Mineral fuel, lubricants, and oils			—		—		—		—		—		—
Animal and vegetable oils, fats and wax			—		—		—		—		—		—
Chemical and similar products, not included in other categories			0,2		0,5		0,3		0,4		0,2		—
Industrial goods, classified by types of material			1,2		1,6		1,9		2,8		0,3		0,5
<i>Rubber tire covers</i>	<i>thou pieces</i>		8,9		1,1		9,2		1,5		23,7		1,8
Machines and transportation equipment			8,0		10,6		15,3		126,8		33,5		14,6
<i>Cars</i>	<i>thou pieces</i>		0,5		1,2		0,9		4,2		5,9		7,4
Various finished products			2,4		0,6		0,4		18,0		106,7		4,9
Goods and transactions, not included in other SITC categories			—		—		—		—		—		—

Notes:

1. NSC data at CIF prices
 2. Pre-2008 data excluding "shuttle traders" (adjustment)
 3. Post-2008 data including "shuttle traders" (adjustment)
- *in accordance with classification worked out at the NBKR

Table I.33: Import of Goods from the Republic of Korea

	<i>unit of measurement</i>	2005		2006		2007		2008		Γ 08		Γ 09	
		<i>in kind</i>	<i>mln. US \$</i>	<i>in kind</i>	<i>mln. US \$</i>	<i>in kind</i>	<i>mln. US \$</i>	<i>in kind</i>	<i>mln. US \$</i>	<i>in kind</i>	<i>mln. US \$</i>	<i>in kind</i>	<i>mln. US \$</i>
Total			27,8		29,1		39,1		83,2		13,2		14,4
<u>Functional distribution*</u>													
Consumption			9,5		4,8		8,2		40,9		7,3		5,5
Raw materials			—		0,6		0,5		0,1		—		—
Interim goods			15,5		19,0		22,4		26,1		3,0		5,3
Investment goods			2,0		4,5		7,8		15,8		2,8		3,5
Energy products			0,8		0,1		0,2		0,3		—		0,1
<u>SITC sections and large positions</u>													
Food products and live animals			0,1		0,3		0,6		0,8		0,2		0,3
Drinks and tobacco			7,7		3,1		4,6		5,5		0,4		0,7
<i>Filtertipped cigarettes</i>	<i>mil pieces</i>		1 621,8		732,9		1 082,1		—		—		—
Non-food raw products, excluding fuel			—		0,6		0,6		0,1		—		—
Mineral fuel, lubricants, and oils			0,8		0,1		0,2		0,3		—		0,1
Animal and vegetable oils, fats and wax			—		—		—		—		—		—
Chemical and similar products, not included in other categories			14,1		16,5		17,6		15,5		2,2		0,6
<i>Primary form plastic</i>	<i>thou tons</i>		9,4		14,1		10,5		15,9		11,8		16,1
Industrial goods, classified by types of material			0,8		1,4		2,9		8,2		0,5		4,0
<i>Rubber tire covers</i>	<i>thou pieces</i>		43,0		0,6		63,7		0,9		109,0		1,7
Machines and transportation equipment			3,4		6,7		12,2		48,5		9,7		8,1
<i>Transmitters including reception devices</i>	<i>thou pieces</i>		0,9		—		122,0		1,8		106,3		1,6
<i>Cars, not included in other categories</i>	<i>pieces</i>		497,0		0,3		56,0		0,1		102,0		1,0
Various finished products			0,9		0,3		0,4		4,4		0,2		0,7
<i>Clothes and accessories</i>			0,5		—		—		0,1		—		—
Goods and transactions, not included in other SITC categories			—		—		—		—		—		—

Notes:

1. NSC data at CIF prices
 2. Pre-2008 data excluding "shuttle traders" (adjustment)
 3. Post-2008 data including "shuttle traders" (adjustment)
- *in accordance with classification worked out at the NBKR

Table I.34: Import of Goods from the Neitherlands

	<i>unit of measurement</i>	2005		2006		2007		2008		Γ 08		Γ 09	
		<i>in kind</i>	<i>mln. US \$</i>	<i>in kind</i>	<i>mln. US \$</i>	<i>in kind</i>	<i>mln. US \$</i>	<i>in kind</i>	<i>mln. US \$</i>	<i>in kind</i>	<i>mln. US \$</i>	<i>in kind</i>	<i>mln. US \$</i>
Total			18,9		27,6		36,4		41,8		7,6		16,0
<u>Functional distribution*</u>													
Consumption			1,3		2,4		1,7		3,3		0,5		0,6
Raw materials			0,1		0,2		0,6		0,5		0,3		0,1
Interim goods			15,7		19,1		29,0		36,0		6,4		15,0
Investment goods			1,8		6,0		4,9		1,8		0,4		0,3
Energy products			—		—		0,1		0,2		—		—
<u>SITC sections and large positions</u>													
Food products and live animals			0,4		1,3		0,7		0,6		0,1		0,1
Drinks and tobacco			0,1		0,2		—		—		—		—
Non-food raw products, excluding fuel			0,2		0,3		0,6		0,6		0,3		0,1
Mineral fuel, lubricants, and oils			—		—		0,1		0,2		—		—
Animal and vegetable oils, fats and wax			—		—		—		—		—		—
Chemical and similar products, not included in other categories			1,8		3,0		3,0		6,1		0,8		1,9
<i>Chemical and similar products, not included in other categories</i>		<i>302,3</i>	<i>0,8</i>	<i>546,5</i>	<i>1,4</i>	<i>419,5</i>	<i>1,2</i>	<i>650,8</i>	<i>3,0</i>	<i>167,3</i>	<i>0,5</i>	<i>194,3</i>	<i>1,0</i>
Industrial goods, classified by types of material			0,4		0,2		0,5		0,9		—		0,6
Machines and transportation equipment			15,4		22,5		31,2		33,2		6,2		13,2
<i>Car components and accessories</i>			<i>8,1</i>		<i>10,3</i>		<i>18,9</i>		<i>17,6</i>		<i>2,1</i>		<i>9,4</i>
<i>The transmitters including reception devices</i>	<i>pieces</i>	<i>1,0</i>	—	<i>425,0</i>	<i>0,5</i>	<i>527,0</i>	<i>2,4</i>	—	—	—	—	—	—
Various finished products			0,6		0,2		0,2		0,3		0,1		—
Goods and transactions, not included in other SITC categories			—		—		—		—		—		—

Notes:

1. NSC data at CIF prices

2. Pre-2008 data excluding "shuttle traders" (adjustment)

3. Post-2008 data including "shuttle traders" (adjustment)

*in accordance with classification worked out at the NBKR

Chart I.1. Exchange Rate and the Real Effective Exchange Rate Index (total, with CIS and non-CIS countries)

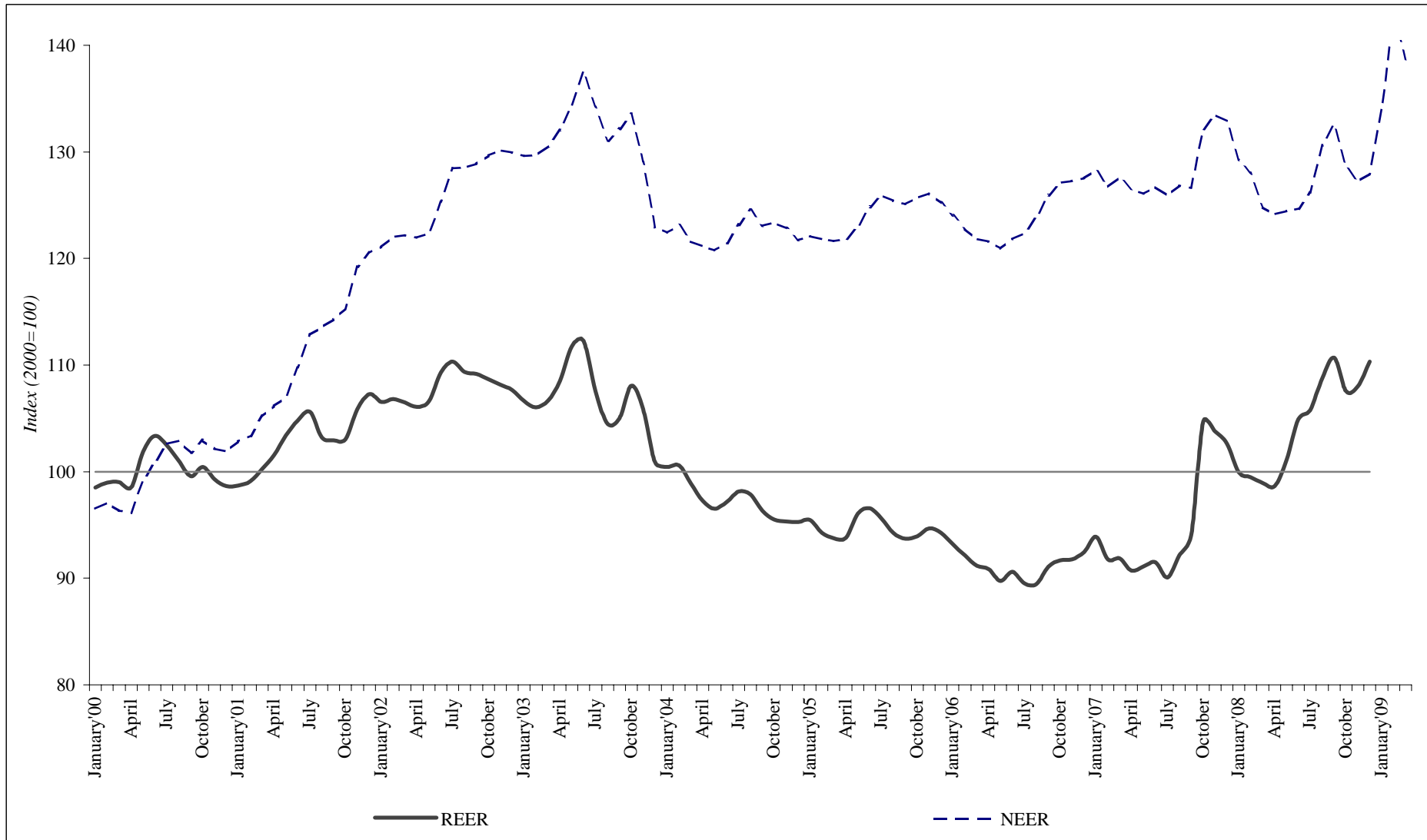


Table I.35 Real and Nominal Effective Exchange Rate Indices: total, by CIS countries
countries

(based period - 2000)

	<i>REER</i>	<i>NEER</i>	<i>REER (CIS)</i>	<i>NEER (CIS)</i>	<i>REER (non-CIS countries)</i>	<i>NEER (non-CIS countries)</i>	<i>Exchange rate (US dollars / 1 som)</i>
January'00	98,5	96,5	99,0	96,1	97,4	97,7	0,0216
February	99,0	97,1	99,7	96,8	97,1	97,8	0,0213
March	99,0	96,3	99,5	95,9	98,0	97,6	0,0211
April	98,5	96,2	98,5	95,4	98,6	98,1	0,0209
May	101,9	99,2	102,1	99,0	101,3	99,6	0,0208
June	103,4	100,9	104,0	101,5	101,9	99,5	0,0210
July	102,5	102,6	102,9	103,3	101,4	101,1	0,0213
August	101,1	102,9	101,0	103,3	101,1	101,9	0,0212
September	99,6	101,8	99,4	102,0	99,9	101,3	0,0207
October	100,5	102,9	99,7	103,0	102,2	102,8	0,0208
November	99,3	102,1	98,3	102,2	101,6	101,9	0,0205
December	98,7	101,9	98,0	102,6	100,3	100,2	0,0204
January'01	98,7	102,8	98,5	104,4	99,1	99,2	0,0205
February	99,1	103,4	97,8	104,2	102,1	101,4	0,0204
March	100,3	105,2	96,9	104,3	108,6	107,3	0,0203
April	101,6	106,2	97,0	104,3	113,3	110,6	0,0202
May	103,4	107,0	98,8	105,4	115,1	110,8	0,0203
June	104,8	109,8	99,8	107,9	117,5	114,4	0,0206
July	105,6	112,9	100,3	110,7	119,0	118,1	0,0209
August	103,2	113,5	98,3	111,6	115,5	118,1	0,0209
September	102,9	114,3	98,4	112,6	114,1	118,4	0,0209
October	103,0	115,3	98,0	113,0	115,5	120,8	0,0209
November	105,8	119,2	102,1	118,8	114,6	120,1	0,0209
December	107,3	120,5	104,1	121,2	114,6	119,2	0,0209
January'02	106,5	121,1	103,6	122,3	113,1	118,5	0,0208
February	106,8	122,0	104,2	123,5	112,7	118,9	0,0209
March	106,5	122,2	103,7	123,9	112,6	118,6	0,0209
April	106,1	122,0	103,4	124,2	111,8	117,4	0,0208
May	106,6	122,3	103,9	124,6	112,7	117,6	0,0209
June	109,3	125,3	106,2	127,7	116,2	120,5	0,0212
July	110,3	128,5	106,8	130,8	117,9	123,7	0,0217
August	109,4	128,5	106,1	130,9	116,5	123,8	0,0217
September	109,2	128,9	106,3	131,5	115,4	123,7	0,0217
October	108,7	129,7	105,8	132,5	114,7	124,0	0,0217
November	108,2	130,2	105,5	133,5	113,7	123,4	0,0217
December	107,7	129,9	105,2	133,8	112,9	122,0	0,0217
January'03	106,6	129,6	104,0	133,5	112,3	121,7	0,0216
February	106,0	129,7	103,4	133,7	111,5	121,6	0,0217
March	106,7	130,5	103,5	133,9	113,5	123,7	0,0220
April	108,5	132,0	104,9	135,1	116,3	125,7	0,0224
May	111,8	134,4	108,5	138,2	118,6	126,4	0,0231
June	112,3	137,5	108,7	141,2	120,0	129,9	0,0241
July	107,6	134,2	103,6	137,3	116,2	127,9	0,0236
August	104,5	131,0	100,6	133,6	113,1	125,8	0,0232
September	105,0	132,2	101,6	135,1	112,5	126,2	0,0234
October	108,1	133,5	104,3	136,3	116,5	127,8	0,0238
November	105,8	129,0	101,2	130,8	116,7	125,7	0,0234
December	100,9	122,9	96,3	124,6	111,8	119,6	0,0226

Table I.35 (continue)

	<i>REER</i>	<i>NEER</i>	<i>REER (CIS)</i>	<i>NEER (CIS)</i>	<i>REER (non-CIS countries)</i>	<i>NEER (non-CIS countries)</i>	<i>Exchange rate (US dollars / 1 som)</i>
January'04	100,4	122,4	95,5	123,8	112,5	119,9	0,0230
February	100,6	123,1	95,1	124,0	113,9	121,7	0,0235
March	98,9	121,6	93,4	122,3	112,5	120,5	0,0232
April	97,2	121,1	91,7	121,6	111,2	120,6	0,0231
May	96,5	120,8	90,5	120,5	112,0	121,9	0,0228
June	97,2	121,5	90,9	121,3	113,4	122,5	0,0231
July	98,1	123,2	91,7	123,0	114,8	124,1	0,0235
August	97,9	124,5	91,4	124,1	114,7	126,1	0,0237
September	96,3	123,0	89,9	122,4	113,2	125,0	0,0235
October	95,5	123,3	88,9	122,5	113,1	125,7	0,0238
November	95,3	122,8	88,3	121,7	114,4	126,0	0,0241
December	95,3	121,7	88,0	120,6	115,4	124,9	0,0242
January'05	95,5	122,1	87,9	121,2	116,4	124,7	0,0244
February	94,3	121,8	87,0	121,1	114,7	123,9	0,0243
March	93,7	121,6	86,4	120,9	115,0	123,7	0,0244
April	93,8	121,8	86,3	120,8	116,4	124,6	0,0242
May	96,1	122,9	88,4	121,8	119,7	126,1	0,0244
June	96,6	124,8	89,0	124,0	120,4	127,2	0,0244
July	95,6	125,9	88,5	125,5	118,6	127,2	0,0244
August	94,2	125,4	87,6	125,2	116,3	126,0	0,0244
September	93,7	125,1	87,2	124,7	115,8	126,3	0,0244
October	94,0	125,7	87,2	125,0	116,9	127,6	0,0245
November	94,7	126,1	87,7	125,5	118,8	128,0	0,0245
December	94,3	125,2	87,4	124,7	118,4	126,9	0,0242
January'06	93,2	124,0	86,2	123,5	118,3	125,8	0,0242
February	92,1	122,8	84,9	121,9	118,9	125,4	0,0241
March	91,2	121,8	83,5	120,7	119,7	125,2	0,0242
April	90,8	121,6	83,0	120,2	120,5	126,0	0,0244
May	89,7	120,9	81,7	119,0	121,0	127,4	0,0246
June	90,6	121,8	81,8	119,1	125,9	131,1	0,0248
July	89,5	122,4	80,5	119,6	125,6	132,1	0,0250
August	89,5	123,8	80,8	121,6	123,8	131,4	0,0252
September	91,1	125,9	82,6	124,0	124,9	132,4	0,0254
October	91,7	127,1	83,2	125,4	125,6	132,8	0,0255
November	91,8	127,3	83,1	125,8	126,0	132,5	0,0257
December	92,5	127,6	83,6	126,1	126,7	132,4	0,0259
January'07	93,9	128,3	84,6	126,9	129,6	133,0	0,0261
February	91,7	126,7	82,5	125,3	127,0	131,2	0,0259
March	91,9	127,6	82,5	126,1	128,1	132,6	0,0262
April	90,7	126,5	81,3	125,0	127,3	131,7	0,0263
May	91,1	126,1	81,6	124,5	128,5	131,2	0,0263
June	91,5	126,7	81,9	125,5	129,0	130,8	0,0263
July	90,1	125,9	80,5	124,8	127,5	129,6	0,0264
August	92,1	126,9	82,5	126,1	130,1	129,4	0,0265
September	94,0	126,6	84,0	126,0	133,4	128,8	0,0267
October	104,7	132,2	93,0	131,5	151,1	134,5	0,0282
November	103,8	133,4	91,9	132,9	150,4	135,4	0,0287
December	102,6	132,9	90,9	132,5	148,8	134,1	0,0286
January'08	99,9	129,2	88,5	129,0	145,8	129,9	0,0279
February	99,5	128,0	88,3	128,1	143,6	127,9	0,0276
March	98,9	124,8	87,1	124,8	144,8	125,3	0,0274
April	98,7	124,1	86,3	124,0	146,1	125,0	0,0274
May	101,1	124,4	88,3	125,0	149,4	123,8	0,0275
June	104,9	124,7	91,1	125,6	156,2	123,2	0,0277
July	105,8	126,1	91,6	127,3	157,5	124,2	0,0282
August	108,8	130,6	94,4	132,6	160,6	126,4	0,0287
September	110,7	132,5	96,4	135,7	161,0	125,6	0,0283
October	107,5	128,6	93,3	131,9	157,4	121,5	0,0268
November	108,0	127,2	93,7	131,4	157,3	118,3	0,0256
December	110,3	127,9	96,3	134,3	156,3	115,1	0,0254
January'09	115,7	134,1	103,1	144,4	154,9	113,7	0,0251
February	122,9	143,0	112,3	159,0	153,7	112,2	0,0245
March	118,0	138,6	107,2	154,1	149,3	109,1	0,0238

Table I.36: Geographic Distribution of Net Inflow of Foreign Direct Investments to the Kyrgyz Republic
(millions of US dollars)

	2005*	2006*	2007*	2008*	I'08*	I'09*
TOTAL	42,6	107,0	207,9	232,7	75,3	-10,3
Non-CIS countries	21,6	-2,3	111,6	121,9	34,0	15,7
Australia	2,5	-0,6	4,7	18,1	1,6	2,1
United Kingdom (Great Britain)	23,5	29,0	26,7	29,8	10,6	9,8
Virginia islands	—	3,0	-0,3	2,1	—	3,5
Germany	-2,7	8,4	-1,0	-3,2	5,2	1,2
EBRD	0,2	0,8	-3,8	-0,5	-1,0	0,2
Israel	3,6	-2,4	-1,2	-0,9	—	0,4
India	-0,1	—	1,1	3,8	-0,1	0,1
Jordan	—	—	—	-0,2	0,3	—
Iran	0,8	0,9	0,4	1,4	-0,1	-0,2
Iceland	—	1,4	-0,4	—	—	—
Ireland	-0,1	—	-0,1	—	—	—
Italy	-1,0	-1,3	-1,0	-1,1	-0,4	-0,6
Canada	0,8	8,5	5,2	3,0	1,0	0,8
Cyprus	4,3	-1,4	4,4	-0,3	0,1	-0,8
China	2,2	-36,7	18,7	-5,6	-2,9	15,8
Kuwait	-0,2	0,5	0,9	1,8	2,0	—
Lithuania	0,1	0,9	-0,1	-0,1	0,1	—
Neitherlands	-0,1	-0,1	0,1	—	—	—
UAE	-0,4	1,1	0,6	2,7	0,3	0,1
Pakistan	0,3	0,7	1,9	6,4	4,5	-0,7
Poland	-0,1	—	-0,1	-2,1	—	-1,1
Portugal	1,4	-1,4	—	-0,3	-0,5	—
Republic of Korea	-7,5	-1,0	0,9	21,1	9,8	0,2
USA	-4,4	1,5	1,3	-0,2	-1,0	-0,3
Turkey	0,3	-17,6	7,3	1,5	1,4	-9,4
Switzerland	-2,4	-0,8	0,5	-0,1	-0,1	1,3
Other International Organizations	-0,1	4,2	17,1	32,7	-0,2	-13,2
CIS Countries	20,9	109,4	96,3	110,8	41,3	-26,0
Belarus	—	0,2	0,1	-0,5	-0,1	-0,5
Georgia	—	—	—	—	—	—
Kazakhstan	22,7	96,4	88,8	87,0	36,4	-29,8
Russia	-1,5	12,7	6,9	21,3	5,2	4,2
Tadjikistan	—	-0,2	0,2	—	—	—
Turkmenistan	—	—	0,1	—	—	—
Ukraine	0,2	—	-0,3	3,1	—	0,1
Uzbekistan	-0,6	0,2	0,5	-0,2	-0,2	—

* excluding the NBKR's estimate

Table I.37: Foreign Direct Investment by kinds of economic activities to the Kyrgyz Republic¹ (net inflow)
(millions of US dollars)

	2005	2006	2007	2008	I'08	I'09
Total	42,6	107,0	207,9	232,7	75,3	-10,3
Agriculture, hunting and forestry	-1,4	-1,8	3,1	-2,5	-0,7	—
The mineral resource industry	23,2	7,0	26,0	-1,3	-2,3	2,0
The manufacturing industry	-4,2	43,7	11,3	40,4	7,7	-37,1
Manufacture and distribution of the electric power, gas and water	-0,4	-1,8	—	—	—	—
The building	4,3	0,5	5,2	27,2	11,7	0,8
Trade; car repair, household products and subjects of personal using	-10,5	7,0	15,8	12,4	13,2	1,6
Hotels and restaurants	1,5	-1,8	1,2	-0,2	-1,9	-1,1
Transport and communication	2,1	7,2	8,4	-0,8	-4,1	3,6
Financial activity	25,9	45,1	83,6	104,3	41,0	15,6
Operations with real estate, rent and granting of services to consumers	1,8	18,8	52,4	53,4	10,8	4,5
The public management	-0,2	-0,1	-0,1	—	—	—
The education	—	-17,6	0,3	—	—	—
Public health services and granting of social services	—	0,8	—	0,4	0,4	-0,2
Granting of municipal, social and personal services	0,4	—	0,6	-0,6	-0,5	—

¹ excluding the NBKR's estimate

Table I.38: International reserves (end of period)¹

	2005	2006	2007	2008	I'08	I'09
Reserves (mil. US dollars)	612,4	817,1	1176,6	1224,6	1140,5	1046,6
Liquid part of reserves (mil. US dollars)*	608,5	814,3	1193,7	1222,4	1150,0	1042,8
Reserves in months of import of goods and facility (exclud. TA)**	3,3	3,0	3,0	3,4	3,0	2,9
Liquid part of reserves in months of import of goods and facility	3,2	3,0	3,0	3,4	3,0	2,8

¹ technical assistance

* liquid part of international reserves

** in calculation it is used the next 12 months of import of the goods and services

Table I.39: External Debt of the Kyrgyz Republic

	2005	2006	2007	2008	I.08	I.09
GED end-period (<i>mil. US dollars</i>)	2 443,0	2 747,3	3 170,0	3 500,4	3 243,3	3 400,8
ED end-period (<i>mil. US dollars</i>)	2 002,9	2 212,4	2 387,9	2 338,6	2 441,3	2 321,7
ED end-period (<i>per cent</i>)*	81,4	77,6	63,4	46,2	48,2	49,1
ED end-period (<i>per cent of exports</i>)**	211,7	172,2	118,1	83,7	87,3	92,2
Schedule of ED payments (<i>mil. US dollars</i>)***	161,0	100,1	187,8	252,8	44,5	53,6
Actual ED repayment (<i>mil. US dollars</i>)	109,0	90,4	167,7	249,6	38,1	48,7
ED service ratio (<i>per cent of exports</i>)						
- as scheduled	17,0	7,8	9,3	9,0	9,4	11,1
- actual	11,5	7,0	8,3	8,9	8,6	11,1
PED end-period (<i>mil. US dollars</i>)	1 859,7	1 976,9	2 076,0	2 082,5	2 120,7	2 075,0
PED end-period (<i>per cent of GDP</i>)*	75,6	69,4	55,1	41,1	41,9	43,9
PED end-period (<i>per cent</i>)**	196,5	153,9	102,6	74,5	75,9	82,4
Schedule of PED (<i>mil. US dollars</i>)***	112,5	69,3	69,9	79,5	19,4	17,6
Actual PED repayment (<i>mil. US dollars</i>)	60,6	62,7	66,3	76,7	19,4	17,6
PED service ratio (<i>per cent</i>)						
- as scheduled	11,9	5,4	3,5	2,8	4,1	3,6
- actual	6,4	4,9	3,3	2,7	3,6	3,6

* to annual GDP

** to annual exports of goods and services

***including payments on interest and principal

Table I.40: Structure of the External Debt of the Kyrgyz Republic by creditors

(end of period)

	2005		2006		2007		2009		Γ'08		Γ'09	
	<i>mln. US \$</i>	<i>in percent of the total</i>	<i>mln. US \$</i>	<i>in percent of the total</i>	<i>mln. US \$</i>	<i>in percent of the total</i>	<i>mln. US \$</i>	<i>in percent of the total</i>	<i>mln. US \$</i>	<i>in percent of the total</i>	<i>mln. US \$</i>	<i>in percent of the total</i>
Total external debt (I+II)	2 002,9	100,0	2 212,4	100,0	2 387,9	100,0	2 338,6	100,0	2 441,3	100,0	2 321,7	100,0
I. Public & Government-guaranteed debt	1 859,7	92,9	1 976,9	89,4	2 076,0	86,9	2 082,5	89,0	2 120,7	86,9	2 075,0	89,4
I.1 Multilateral*	1 281,4	64,0	1 378,5	62,3	1 458,6	61,1	1 462,1	62,5	1 486,7	60,9	1 412,7	60,8
IMF	177,9	8,9	163,1	7,4	149,8	6,3	164,5	7,0	146,6	6,0	149,7	6,4
World Bank	562,8	28,1	612,8	27,7	656,5	27,5	650,2	27,8	656,5	26,9	627,9	27,0
EBRD	24,7	1,2	16,6	0,7	10,4	0,4	6,0	0,3	9,9	0,4	5,5	0,2
ADB	466,8	23,3	532,2	24,1	583,0	24,4	582,4	24,9	611,1	25,0	571,8	24,6
Islamic Development Bank	28,0	1,4	31,5	1,4	36,3	1,5	37,5	1,6	38,9	1,6	37,2	1,6
IFAD	9,0	0,4	10,0	0,5	10,3	0,4	10,3	0,4	12,1	0,5	10,0	0,4
OPEC	6,3	0,3	5,6	0,3	4,9	0,2	4,2	0,2	4,7	0,2	4,0	0,2
Nordic Development Fund	6,0	0,3	6,7	0,3	7,4	0,3	6,8	0,3	6,7	0,3	6,5	0,3
I.2 Bilateral	575,2	28,7	596,0	26,9	615,7	25,8	619,4	26,5	632,6	25,9	661,6	28,5
I.2.1 CIS countries	197,1	9,8	200,0	9,0	200,1	8,4	196,4	8,4	201,3	8,2	193,6	8,3
Russia**	186,0	9,3	188,9	8,5	191,5	8,0	193,6	8,3	192,7	7,9	193,6	8,3
Uzbekistan	11,1	0,6	11,1	0,5	8,6	0,4	2,9	0,1	8,6	0,4	0,0	0,0
I.2.2 Other countries	378,1	18,9	396,1	17,9	415,6	17,4	423,0	18,1	431,3	17,7	468,1	20,2
Turkey	46,3	2,3	48,4	2,2	49,3	2,1	50,1	2,1	49,7	2,0	49,9	2,2
Japan**	225,2	11,2	230,5	10,4	242,8	10,2	251,2	10,7	260,9	10,7	284,0	12,2
Germany**	40,8	2,0	58,8	2,7	69,6	2,9	74,3	3,2	67,2	2,8	71,0	3,1
Pakistan	10,0	0,5	0,0	0,0	0,0	0,0	0,0	0,0	0,0	0,0	0,0	0,0
China	13,9	0,7	14,4	0,7	8,2	0,3	7,8	0,3	8,1	0,3	22,5	1,0
France**	5,5	0,3	5,7	0,3	6,5	0,3	6,2	0,3	6,7	0,3	5,9	0,3
Kuwait Fund	15,7	0,8	15,8	0,7	16,8	0,7	16,6	0,7	17,2	0,7	19,0	0,8
India	1,0	0,1	1,0	0,0	1,0	0,0	0,0	0,0	0,0	0,0	0,0	0,0
Korea	16,7	0,8	18,4	0,8	18,2	0,8	13,6	0,6	18,2	0,7	12,4	0,5
Denmark**	3,0	0,1	3,0	0,1	3,2	0,1	3,3	0,1	3,2	0,1	3,3	0,1
I.3 Government-guaranteed debt	3,1	0,2	2,4	0,1	1,7	0,1	1,0	0,0	1,4	0,1	0,7	0,0
II. Private non-guaranteed debt	143,2	7,1	235,5	10,6	311,9	13,1	256,1	11,0	320,6	13,1	246,7	10,6

* creditors acting on a multilateral basis including international financial institutions

** Paris club members

Table I.41: Balance of International Investment Position of the Kyrgyz Republic as of January 1, 2009 and March 1, 2009

(mil. US dollars)

	<i>Position as of 01.01.09</i>	<i>Transactions</i>	<i>Price changes</i>	<i>Exchange rate changes</i>	<i>Other adjustments</i>	<i>Position as of 01.04.09</i>
	<i>1</i>	<i>2</i>	<i>3</i>	<i>4</i>	<i>5</i>	<i>6</i>
A. Assets	2093,9	-184,4	-1,6	-106,1	-0,4	1801,4
Direct investment abroad	18,2	-1,6	—	-0,2	-0,4	16,1
Portfolio investments	78,7	10,0	-6,0	—	—	82,7
Financial derivatives	—	—	—	—	—	—
Other investments	774,6	-28,0	—	-86,1	—	659,9
Currency and deposits	334,2	21,3	—	-5,8	—	349,7
Loans	13,5	-5,0	—	0,5	—	9,1
Monetary authorities	—	—	—	—	—	—
General government	—	—	—	—	—	—
Banks	13,5	-5,0	—	0,5	—	9,1
Other sectors	—	—	—	—	—	—
Trade credits	424,7	-46,6	—	-80,8	—	297,2
Other assets	2,2	2,3	—	-0,1	—	3,9
Reserve assets	1222,4	-164,9	4,4	-19,8	—	1042,8
Monetary gold	71,9	—	4,4	—	—	76,3
SDR	55,2	-9,9	—	-1,1	—	44,1
Reserve position in IMF	—	—	—	—	—	—
Foreign exchange	1095,4	-155,0	—	-18,7	—	922,3
Currency and deposits	531,3	-72,3	—	-10,0	—	449,6
Monetary authorities	231,8	—	—	—	—	—
Banks	299,6	—	—	—	—	—
Foreign securities	564,0	-82,6	—	-8,7	—	472,7
Bonds and other debt securities	—	—	—	—	—	—
Tools of monetary market and derivatives	564,0	-82,6	—	-8,7	—	472,7
B. Liabilities	3871,2	-18,1	-0,1	-18,1	-128,6	3706,3
Direct investment in KR	1015,3	-10,3	-0,1	-7,8	-109,0	888,1
Portfolio investments	21,2	-0,4	—	—	—	20,7
Financial derivatives	—	—	—	—	—	—
Other investments	2834,7	-7,4	—	-10,3	-19,6	2797,5
Currency and deposits	249,7	0,2	—	2,8	—	252,7
Loans	2179,6	4,7	—	6,5	—	2190,8
Monetary authorities	164,5	-10,0	—	-4,9	—	149,7
General government	1918,0	13,9	—	-6,5	—	1925,3
Banks	33,6	-3,0	—	16,1	—	46,8
Other sectors	63,5	3,8	—	1,7	—	68,9
Trade credits	405,5	-12,2	—	-19,6	-19,6	354,1
Other liabilities	—	—	—	—	—	—
C. Net International Investment Position (A-B)	-1777,3	-166,3	-1,5	-88,0	128,3	-1904,9

Table I.42: Developments in Foreign Assets and Liabilities of the Kyrgyz Republic, 2005 - for the first quarter of 2009

(mil. US dollars)

	<i>Position as of 01.01.05</i>	<i>Position as of 01.01.06</i>	<i>Position as of 01.01.07</i>	<i>Position as of 01.01.08</i>	<i>Position as of 01.01.09</i>	<i>Position as of 01.04.09</i>
A. Assets	991,3	1165,2	1270,3	1695,8	2093,9	1801,4
Direct investment abroad	83,2	147,5	3,4	17,9	18,2	16,1
Portfolio investments	17,4	14,9	19,3	50,5	78,7	82,7
Joint stock	—	—	—	27,7	27,7	27,7
Promissory note	17,4	14,9	19,3	22,8	51,0	55,1
Financial derivatives	—	—	—	—	—	—
Other investments	347,0	394,3	433,3	433,7	774,6	659,9
Currency and deposits	200,4	216,7	236,0	208,8	334,2	349,7
Loans	15,0	17,9	17,4	20,6	13,5	9,1
Monetary authorities	—	—	—	—	—	—
General government	0,8	0,6	0,3	—	—	—
Banks	14,2	17,3	17,1	20,6	13,5	9,1
Other sectors	—	—	—	—	—	—
Trade credits	110,1	155,9	177,0	221,5	424,7	297,2
Other assets	21,4	3,9	2,9	-17,1	2,2	3,9
Reserve assets	543,8	608,5	814,3	1193,7	1222,4	1042,8
Monetary gold	18,9	42,6	52,8	69,5	71,9	76,3
SDR	19,7	5,3	33,3	13,7	55,2	44,1
Reserve position in IMF	—	—	—	—	—	—
Foreign exchange	505,1	560,6	728,2	1110,5	1095,4	922,3
Currency and deposits	350,1	434,1	518,4	745,4	531,3	449,6
Foreign securities	155,0	126,5	209,7	365,1	564,0	472,7
B. Liabilities	2945,5	2798,3	3061,0	3501,6	3871,2	3706,3
Direct investment in KR	712,4	517,7	619,8	818,5	1015,3	888,1
Portfolio investments	6,0	6,1	6,6	8,7	21,2	20,7
Joint stock	6,0	6,1	6,6	8,7	21,2	20,7
Promissory note	—	—	—	—	—	—
Financial derivatives	—	—	—	—	—	—
Other investments	2227,1	2274,5	2434,5	2674,4	2834,7	2797,5
Currency and deposits	112,4	152,7	119,6	204,5	249,7	252,7
Loans	2003,9	1902,9	2031,7	2143,5	2179,6	2190,8
Monetary authorities	206,9	177,9	163,1	149,8	164,5	149,7
General government	1752,3	1681,8	1813,9	1926,2	1918,0	1925,3
Banks	7,2	8,3	18,0	22,1	33,6	46,8
Other sectors	37,5	34,9	36,8	45,4	63,5	68,9
Trade credits	110,7	218,9	283,2	326,4	405,5	354,1
Other liabilities	—	—	—	—	—	—
C. Net International Investment						
Position (A-B)	-1954,2	-1633,1	-1790,7	-1805,8	-1777,3	-1904,9

**Table II.1: Sources of Information Used by the National Bank
for Compilation of the Balance of Payments of the Kyrgyz Republic**

Items of the Balance of Payments	Sources of information	Contents of information
Current account		
Commodities		
Export of goods (F.O.B.)		
export	NSC	
commodities purchased in ports	NSC	
nonmonetary gold	NSC	
Import of goods (F.O.B.)		
import (C.I.F.)	NSC	
value adjustment	NSC	NSC estimate of the share of transport and insurance services in import at C.I.F. prices
commodities purchased in ports	NSC	data on import of bunker fuel based on reports of enterprises according to form 1-services
Services		
Transportation services	NSC, CB	estimates NSC of the share of transportation costs in import at C.I.F. on the basis of inspection of the enterprises
Travels	NSC	estimate in compliance with the methodology based on the number of residents arriving (leaving) in the Republic (from the Republic)
Communication services	MTC	
Construction	CB	
Insurance services	NSC, enterprises, CB	NBKR assessment by the share of costs in import at C.I.F. prices on the basis of surveys of enterprises; data from enterprises and banking statistics
Financial services	NBKR, CB	
Computer and information	CB	
Government services	MFA, CB	data on maintenance expenses of the KR representative offices abroad; data on
Business services	NSC, CB, enterprises	data on other business technical services, collected from enterprises according to reporting form 8VES-services; data from some large enterprises
including technical assistance	IMF, MF	the estimated data
Other services	NSC, CB	data on other services collected from enterprises according to reporting form 8 VES-services; data on other services from banking statistics
Income		
Employee compensation	NSC, CB,	
Income on investment		
Income on direct investment	NSC, CB	data on direct investment income collected from joint ventures and foreign enterprises according to reporting form 1-SP; data from banking statistics on direct investment income
Income on portfolio investment	NBKR, CB	
Other investment income		
Interest on loans		
Monetary authorities	NBKR	
General government	MF, NBKR,	
Banks	CB	
Other sectors	Enterprises	
Other investment income	NBKR, CB, enterprises	data on profit and expenses of the NBKR, relating to international reserve management; incomes of CB and enterprises from assets abroad

Table II.1: (continue)

Items of the Balance of Payments	Sources of information	Contents of information
Current transfers		
Humanitarian aid	NSC, enterprises	data on rendered humanitarian aid based on SCI data
Technical assistance	IMF	the estimated data
Other grants	NBKR	
Contributions to international	MF	
Workers' remittances	MT&C, CB	
Current and financial account		
Capital transfers		
Commodity grants	NSC	estimate of the share of capital goods in the total volume of commodity grants
Migration related transfers	NSC	NBKR estimate of migrants' transfers based on NSC data on the number of arriving and departing migrants
Debt forgiveness	Enterprises,	
Direct investment		
Abroad	CB,	
To the Kyrgyz Republic	NSC, CB, enterprises	data on direct investment collected from joint ventures and foreign enterprises according to reporting form 1-SP; data from banking statistics on direct investment into the banking sector; data of some large joint ventures
Portfolio investment		
Promissory notes	NBKR, CB,	
Financial derivative	Enterprises	
Other investment		
Assets		
Money in cash and deposits		
Banks	CB	
Other sectors	Enterprises	
Trade loans	NSC	
Other assets		
Monetary authorities	NBKR	
General government	MF	
Liabilities		
Money in cash and deposits		
Banks	CB	
Trade loans	NSC	
Loans		
Monetary authorities	NBKR	data on IMF loans
General government	MF, NBKR, enterprises	data on loans received/repaid by the public sector or under guarantee of the Government
Banks	CB	data from banking statistics on loans received by commercial banks
Other sectors	Enterprises	data on loans received/repaid under no guarantee of the Government
Overdue debts	MF, CB,	
Reserve assets	NBKR	